

DESIGNED & DIMENSIONED
IN MILLIMETERS(INCHES)

MCX7-P-C-XX-RA-CA3

GENDER
-P: PLUG

TERMINATION
-CA3: CABLE (RG179)

TYPE
-C: CABLE

ORIENTATION
-RA: RIGHT ANGLE

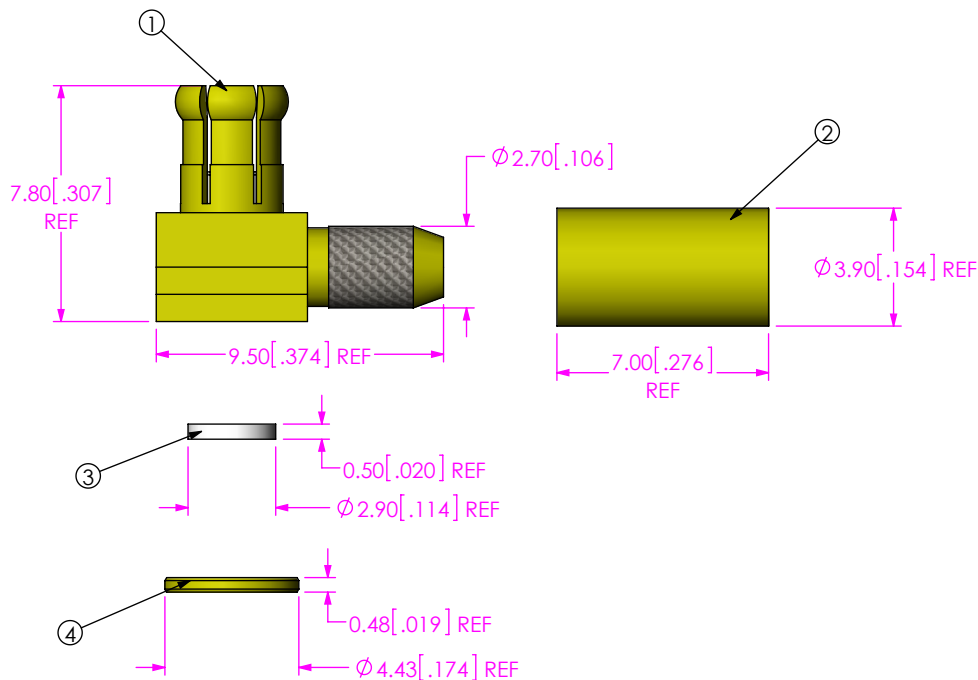
PLATING SPECIFICATION

-HN: 30μ" GOLD CENTER CONTACT,
100μ" NICKEL OUTER CONTACT
-H: 30μ" GOLD CENTER CONTACT,
3μ" GOLD OUTER CONTACT
(SEE TABLE 1)

DO NOT
SCALE FROM
THIS PRINT

TABLE 1

ITEM	COMPONENT	-HN	-H
1	SUB ASSEMBLY	SUB-MCX7-P-C-HN-RA-CA3	SUB-MCX7-P-C-H-RA-CA3
2	FERRULE	MCX-FER-001-N	MCX-FER-001-F
3	INSULATOR	MCX-INS-001	
4	CAP	MCX-CAP-001-N	MCX-CAP-001-F



NOTES:

1. NOTE DELETED.
2. NOTE DELETED.
3. NOTE DELETED.
4. NOTE DELETED.
5. PRODUCT TO BE BULK PACKAGED PER PACKAGING STANDARD CO-RF-WI-3040-M.
6. NOTE DELETED.
7. NOTE DELETED.
8. NOTE DELETED.

UNLESS OTHERWISE SPECIFIED,
DIMENSIONS ARE IN
MILLIMETERS [INCHES].
TOLERANCES ARE:
DECIMALS ANGLES
.X: ± 0.3 [.01] 2°
.XX: ± 0.13 [.005]
.XXX: ± 0.051 [.0020]

PROPRIETARY NOTE

THIS DOCUMENT CONTAINS CONFIDENTIAL AND PROPRIETARY INFORMATION AND ALL DESIGN, MANUFACTURING, REPRODUCTION, USE, PATENT RIGHTS AND SALES RIGHTS ARE EXPRESSLY RESERVED BY SAMTEC, INC. THIS DOCUMENT SHALL NOT BE DISCLOSED, IN WHOLE OR PART, TO ANY UNAUTHORIZED PERSON OR ENTITY NOR REPRODUCED, TRANSFERRED OR INCORPORATED IN ANY OTHER PROJECT IN ANY MANNER WITHOUT THE EXPRESS WRITTEN CONSENT OF SAMTEC, INC.



520 PARK EAST BLVD, NEW ALBANY, IN 47150
PHONE: 812-944-6733 FAX: 812-948-5047
e-Mail: info@SAMTEC.com code: 55322

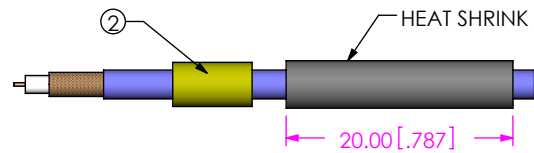
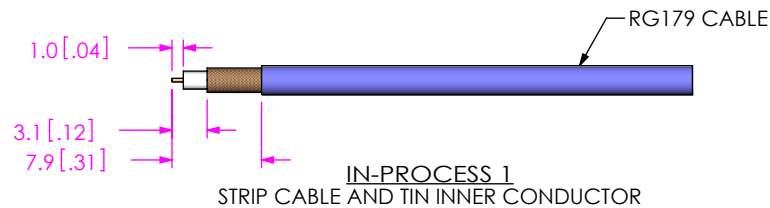
MATERIAL: DO NOT SCALE DRAWING SHEET SCALE: 4:1

SHELL, FERRULE, CAP: BRASS
CONTACT: BRASS
DIELECTRIC: PTFE

DESCRIPTION:
TRUE 75 OHM, MCX RIGHT ANGLE PLUG, RG179

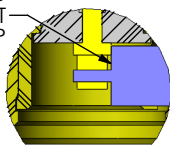
DWG. NO.
MCX7-P-C-XX-RA-CA3

BY: R MUSSER 02/06/2008 SHEET 1 OF 2

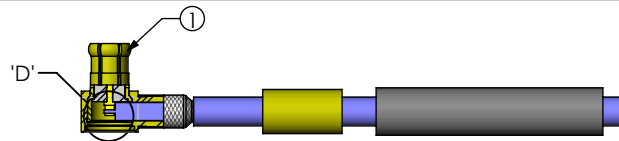


IN-PROCESS 2
ADD HEAT SHRINK TUBE AND FERRULE

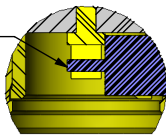
END OF CABLE DIELECTRIC SHOULD SEAT AGAINST CONTACT CUP



DETAIL 'D'



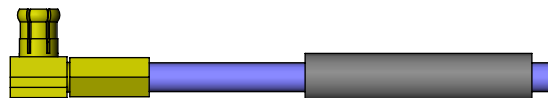
CABLE CENTER CONDUCTOR SHOULD NOT PROTRUDE OUTSIDE CONTACT CUP AFTER FERRULE IS CRIMPED



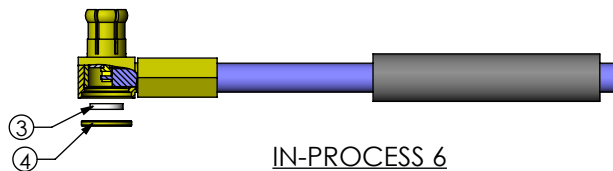
DETAIL 'B'



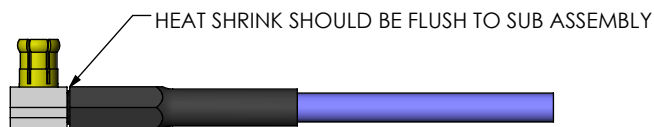
IN-PROCESS 4
CRIMP FERRULE
(USE RF CRIMP HAND TOOL #CAT-RF-FER-01, AND .128" DIE SIZE)



IN-PROCESS 5
SOLDER SIGNAL SOCKET



IN-PROCESS 6
PRESS INSULATOR AND CAP



IN-PROCESS 7
ACTIVATE HEAT SHRINK

PROPRIETARY NOTE
THIS DOCUMENT CONTAINS CONFIDENTIAL AND PROPRIETARY INFORMATION AND ALL DESIGN, MANUFACTURING, REPRODUCTION, USE, PATENT RIGHTS AND SALES RIGHTS ARE EXPRESSLY RESERVED BY SAMTEC, INC. THIS DOCUMENT SHALL NOT BE DISCLOSED, IN WHOLE OR PART, TO ANY UNAUTHORIZED PERSON OR ENTITY NOR REPRODUCED, TRANSFERRED OR INCORPORATED IN ANY OTHER PROJECT IN ANY MANNER WITHOUT THE EXPRESS WRITTEN CONSENT OF SAMTEC, INC.

DO NOT SCALE DRAWING

SHEET SCALE: 1.5:1



520 PARK EAST BLVD, NEW ALBANY, IN 47150
PHONE: 812-944-6733 FAX: 812-948-5047
e-Mail: info@SAMTEC.com code: 55322

DESCRIPTION:
TRUE 75 OHM, MCX RIGHT ANGLE PLUG, RG179

DWG. NO.

MCX7-P-C-XX-RA-CA3

BY: R MUSSER

02/06/2008

SHEET 2 OF 2