

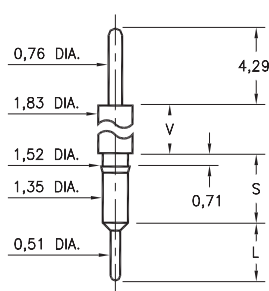
MALE PCB PINS

PRINTED CIRCUIT PINS

3400 ⇨ 3402/3405/3410

34XX-0-00-XX-00-00-03-0

Press-fit in 1,45 mounting hole

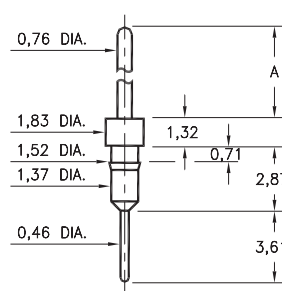


Basic Part Number	Shoulder Height V	Length S	Length L
3402-0	1,32	3,51	2,92
3401-0	2,54	3,45	2,92
3405-0	4,29	3,71	2,92
3400-0	11,71	3,68	2,92
3410-0	23,72	3,45	3,15

3411

3411-X-00-XX-00-00-03-0

Press-fit in 1,45 mounting hole

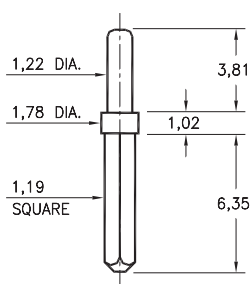


Basic Part Number	Pin Length A
3411-0	10,59
3411-1	5,51

0600

0600-0-05-XX-00-00-01-0

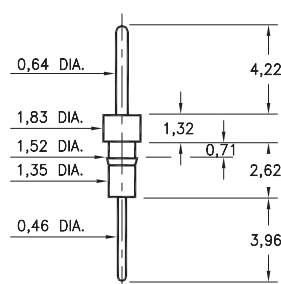
Solder mount 1,32 mounting hole



0290

0290-0-00-XX-00-00-03-0

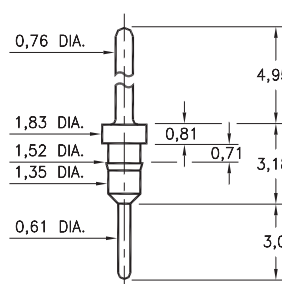
Press-fit in 1,45 mounting hole



7007

7007-0-00-XX-00-00-03-0

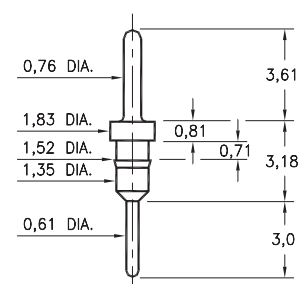
Press-fit in 1,45 mounting hole



5016

5016-0-00-XX-00-00-03-0

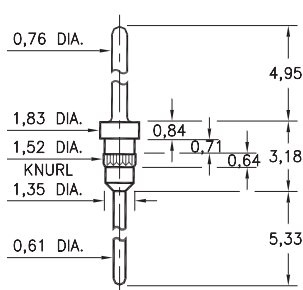
Press-fit in 1,45 mounting hole



5005

5005-0-00-XX-00-00-03-0

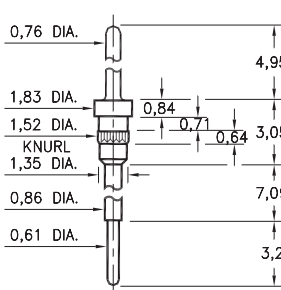
Press-fit in 1,45 mounting hole



5107

5107-0-00-XX-00-00-03-0

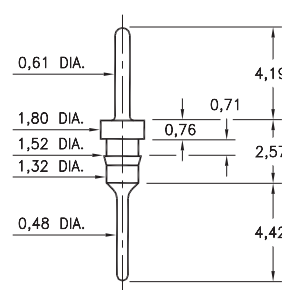
Press-fit in 1,45 mounting hole



8919

8919-0-00-XX-00-00-03-0

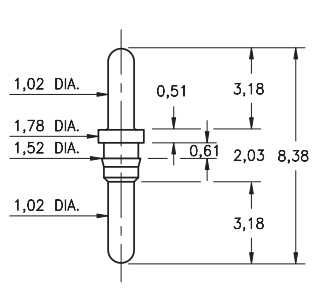
Press-fit in 1,45 mounting hole



3077

3077-0-00-XX-00-00-03-0

Press-fit in 1,45 mounting hole



SPECIFICATIONS:

Pin Material: Brass Alloy 360, 1/2 Hard
(Except where noted)

Dimensions: Millimeters

Tolerances On: Lengths: ± 0,13
Diameters: ± 0,051
Angles: ± 2°



ORDER CODE: XXXX - X - 0X - XX - 00 - 00 - XX - 0

BASIC PART #

SPECIFY PIN FINISH:

- 01 5,08µm TIN/LEAD OVER NICKEL
- ◆ 80 5,08µm TIN OVER NICKEL (RoHS)
- ◆ 15 0,25µm GOLD OVER NICKEL (RoHS)
- ◆ 21 0,51µm GOLD OVER NICKEL (RoHS)
- ◆ 34 1,27µm GOLD OVER NICKEL (RoHS)

