

NOTES:

1. ALL DIMENSIONS ARE REFERENCE.

2. MATERIALS:

HOUSING: THERMOPLASTIC, BLACK

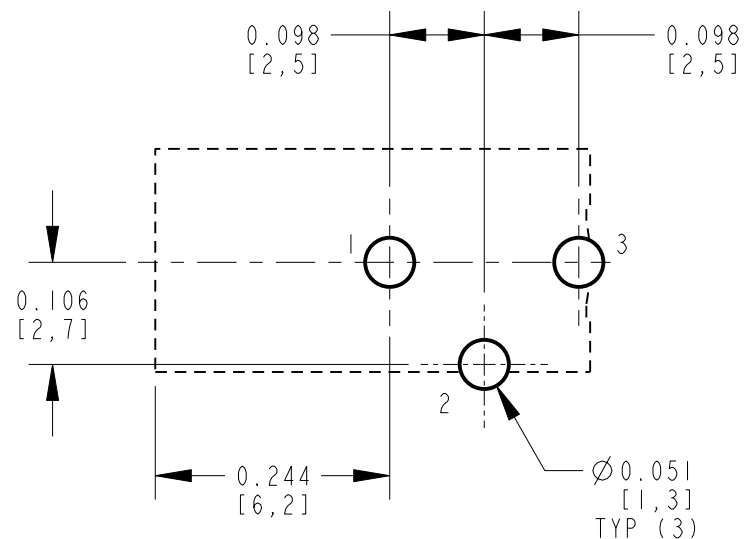
SPRING CONTACT: COPPER ALLOY, TIN PLATED - LEAD FREE

SHUNT TERMINAL: COPPER ALLOY, TIN PLATED - LEAD FREE

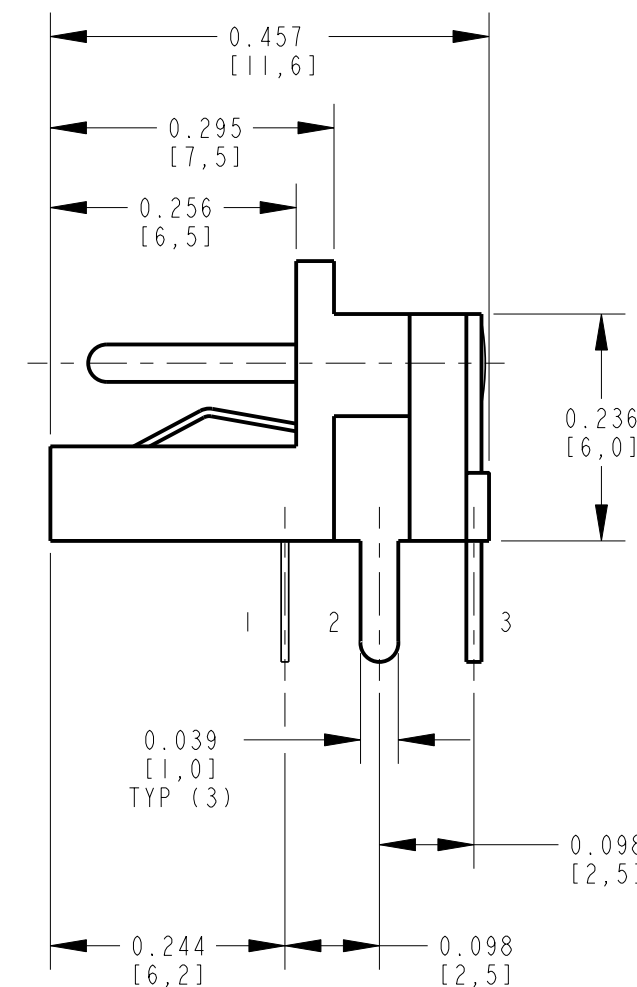
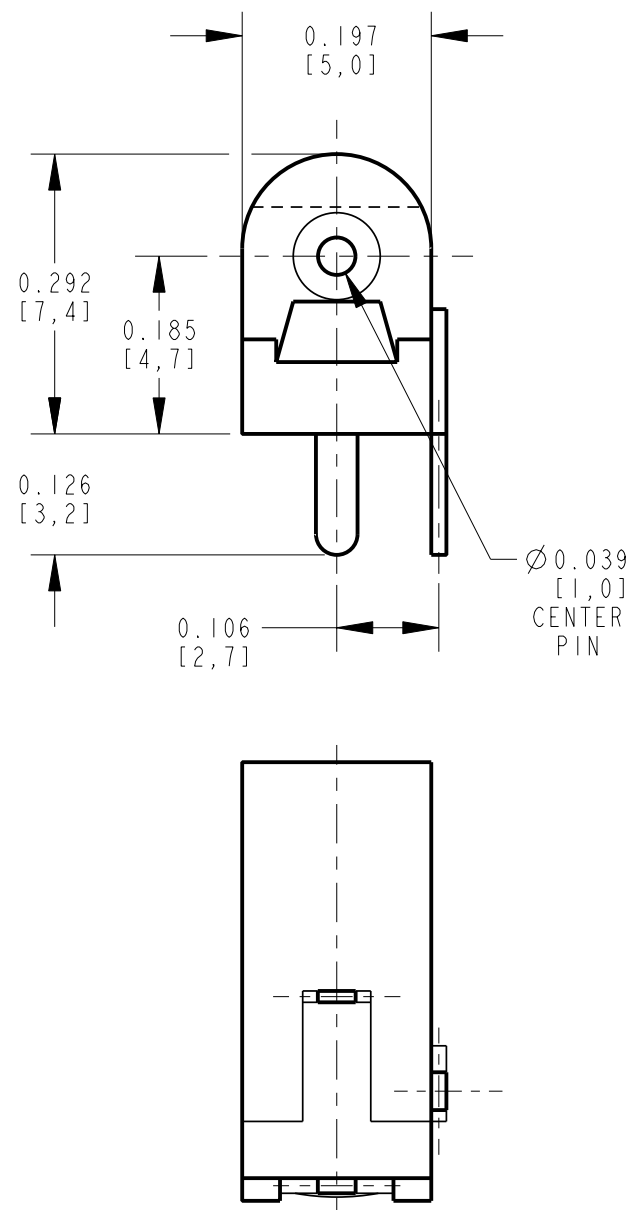
PIN CONTACT: COPPER ALLOY, TIN PLATED - LEAD FREE

CENTER PIN: COPPER ALLOY, NICKEL PLATED

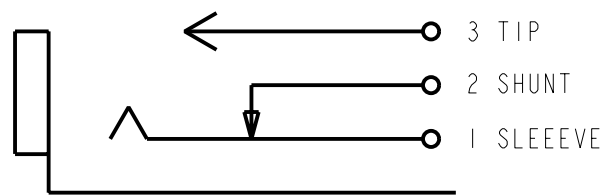
3. THIS PRODUCT IS RoHS COMPLIANT



PC BOARD LAYOUT
COMPONENT SIDE



CUSTOMER DRAWING



SCHEMATIC

REV	ECO NUMBER	DATE	BY	APVD
A	25129	8-29-05	JL	MW
REVISIONS				

- ★ STAR SYMBOL DENOTES CRITICAL DIMENSION
- UNLESS OTHERWISE SPECIFIED
- 1. ALL DIMENSIONS IN INCHES
 - TWO PLACE DECIMALS ±0.01
 - THREE PLACE DECIMALS ±0.005
 - ANGLES ±
 - ALL DIA. CONCENTRIC WITHIN 0.005 T.I.R.
- 2. FEATURES ON THE SAME CENTERLINE MUST BE ALIGNED WITHIN ±0.002
- 3. REMOVE ALL BURRS

DO NOT SCALE DRAWING

THIS DRAWING DESCRIBES A DESIGN CONSIDERED PROPRIETARY IN NATURE, DEVELOPED AND MANUFACTURED BY SWITCHCRAFT INC. AND IS RELEASED ON A CONFIDENTIAL BASIS FOR IDENTIFICATION PURPOSES ONLY.									
SIZE	WIDTH	MULT	LBS/M	TEMPER					
FINISH					MATERIAL				
SPEC No.					SPEC No.				
FIRST USED ON					SCALE				
					5=1				
DATE DRAWN	BY	CHKD	APVD						
29-Aug-05	JL	MW	MW						
			8-29-05	8-29-05					
NAME RIGHT ANGLE PCB DC JACK, OPEN FRAME, Ø1.0MM PIN, RoHS								PART No.	
								RAPC7420FX	
								REV	
								A	