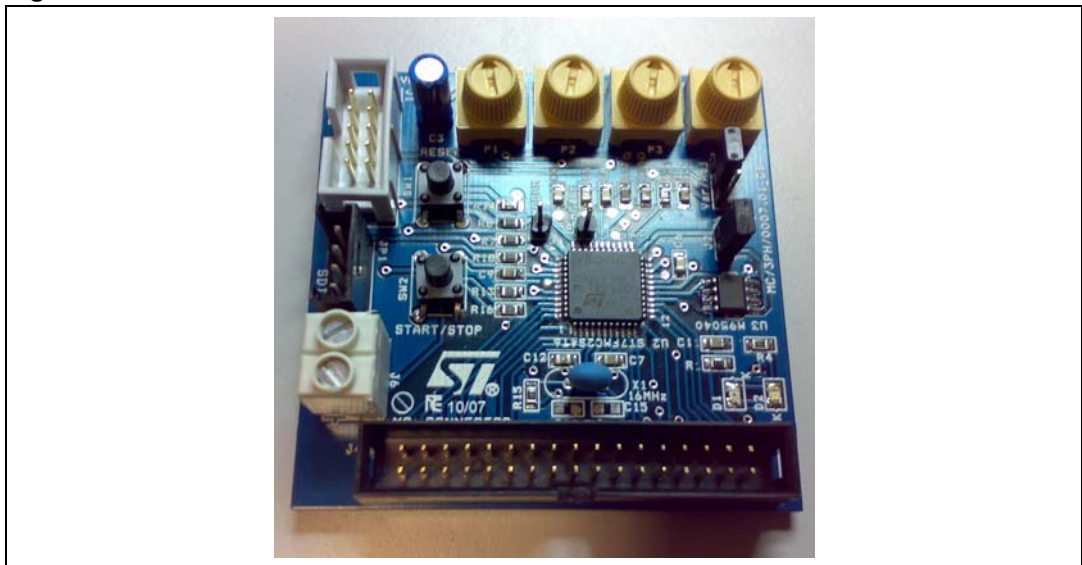


IGBT Power module evaluation kit - ST7MC control board

Introduction

The ST7MC evaluation board STEVAL-IHM010V1 is a complete development platform for STMicroelectronics' ST7MC microcontroller. Based on a cost effective, flexible and open design, it allows easy demonstration of ST7MC capabilities and enables rapid evaluation of the MTC microcontroller's peripherals. It includes the ST7MC 8-bit microcontroller with 16 K internal Flash memory. The STEVAL-IHM010V1 features motor control Connector (MC-Connector) and hardware features for developing motor control applications based on ST7MC peripherals including motor control peripheral (MTC), Serial Communication Interface (SCI). The STEVAL-IHM010V1 uses an In-Circuit Communication (ICC) standard interface to connect to your host PC via In-Circuit Debuggers/Programmers like inDART-STX board from Softec.

Figure 1. STEVAL-IHM010V1



Features

- 5 V power supply connector
- 34-pin dedicated motor control connector
- Serial communication Interface connector
- Programming and debug support via 10-pin ICC connector
- Onboard 4K-bit (512 byte) serial memory
- Four potentiometers for runtime settings
- Start / stop button
- Reset button
- Debug pins available

Contents

- 1 System architecture 7**

- 2 Safety and operating instructions 8**
 - 2.1 General 8
 - 2.2 Reference design board intended use 8
 - 2.3 Reference design board installation 8
 - 2.4 Electronic connection 8
 - 2.5 Reference design board operation 8

- 3 ST7FMC2S4T6 Microcontroller functions 9**
 - 3.1 Main features 9

- 4 Control board electrical characteristics 11**

- 5 Board architecture 12**
 - 5.1 MC Connector 13
 - 5.2 ICC connector 15
 - 5.3 SDI Interface (Serial Data Interface) 16

- 6 Board schematics 17**

- 7 Motor control demonstration 18**
 - 7.1 Environmental considerations 18
 - 7.2 Hardware requirements 19
 - 7.3 Software requirements 19
 - 7.3.1 Installing the software 19
 - 7.4 Control board setup 20
 - 7.4.1 Choosing the right firmware 20
 - 7.4.2 Configuring the firmware using GUI 21
 - 7.4.3 Motor type selection 22
 - 7.4.4 "3 Phase BLAC/DC (trapezoidal)" settings 23
 - 7.4.5 "3 Phase BLAC/DC (trapezoidal)" advanced settings 25
 - 7.4.6 "3 Phase AC induction motor (sinewave)" settings 27
 - 7.4.7 "3 Phase AC induction motor (sinewave)" advanced settings 28

7.4.8	"3 Phase PMAC motor (sinewave)" settings	29
7.4.9	"3 Phase PMAC Motor (sinewave)" advanced settings	31
7.4.10	Changing the maximum current allowed by GUI	32
7.4.11	Compiling the firmware	32
7.4.12	Programming the firmware	33
7.4.13	Setup option byte	34
7.4.14	Jumper setting table	35
7.4.15	Board connection	35
7.5	Driving the AC induction motor	36
7.5.1	Specific connection (sensor)	36
7.5.2	Specific jumper settings	37
7.5.3	LED behavior after power on	37
7.5.4	Setting of potentiometer	37
7.5.5	Run the motor (LED behavior)	37
7.5.6	Changing real-time parameters	37
7.5.7	Stop the motor (LED behavior)	38
7.6	Driving the BLDC Motor (trapezoidal - sensorless)	38
7.6.1	Specific connection (sensor)	38
7.6.2	Specific jumper settings	38
7.6.3	LED behavior after power on	39
7.6.4	Setting of potentiometer	39
7.6.5	Running the motor (LED behavior)	39
7.6.6	Changing real-time parameters	39
7.6.7	Stopping the motor (LED behavior)	40
7.7	Driving the BLDC Motor (trapezoidal - sensored)	40
7.7.1	Specific connection (sensor)	41
7.7.2	Specific jumper settings	41
7.7.3	LED behavior after power on	41
7.7.4	Setting of potentiometer	41
7.7.5	Running the motor (LED behavior)	41
7.7.6	Changing real-time parameters	42
7.7.7	Stopping the motor (LED behavior)	43
7.8	Driving the BLAC motor	43
7.8.1	Specific connections (sensor)	43
7.8.2	Specific jumper settings	43
7.8.3	LED behavior after power on	44
7.8.4	Setting of potentiometer	44

7.8.5	Running the motor (LED behavior)	44
7.8.6	Changing real-time parameters	44
7.8.7	Stopping the motor (LED behavior)	45
8	Bill of materials	46
9	References	47
10	Revision history	47

List of tables

Table 1.	ST7FMC2S4T6 Functions	10
Table 2.	Control board electrical characteristics	11
Table 3.	Motor control connector	14
Table 4.	Firmware libraries arranged according to driving strategy	21
Table 5.	Configuration ".h" files	21
Table 6.	"3 Phase BLAC/DC (trapezoidal)" basic parameters	23
Table 7.	"3 Phase BLAC/DC (trapezoidal)" advanced parameters	25
Table 8.	"3 Phase AC induction motor (sinewave)" basic parameters	27
Table 9.	"3 Phase AC induction motor (sinewave)" advanced parameters	28
Table 10.	"3 Phase PMAC motor (sinewave)" basic parameters	29
Table 11.	"3 Phase PMAC motor (sinewave)" advanced parameters	31
Table 12.	Jumper settings	35
Table 13.	Potentiometer functionality based on open/closed loop driving strategy	38
Table 14.	Potentiometer functionality based on open/closed loop driving strategy	39
Table 15.	"BLDC Sensored" motor connections	41
Table 16.	Potentiometer functionality based on open/closed loop driving strategy	42
Table 17.	"PMAC Sensored" motor connections	43
Table 18.	Potentiometer functionality based on open/closed loop driving strategy	44
Table 19.	Bill of materials	46
Table 20.	Revision history	47

List of figures

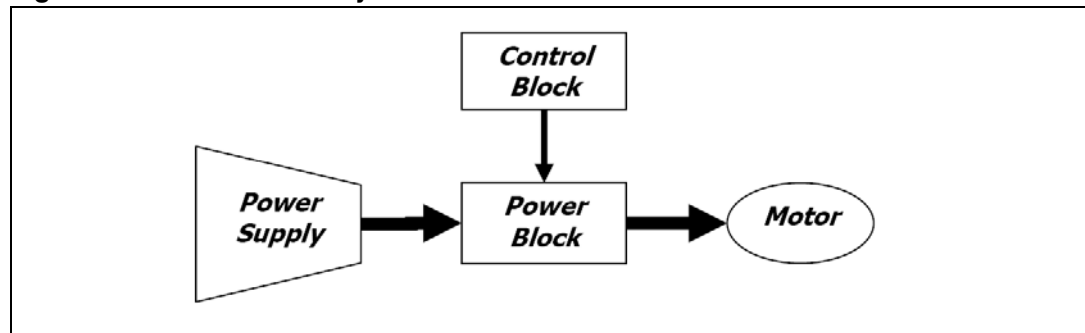
Figure 1.	STEVAL-IHM010V1	1
Figure 2.	Motor control system architecture	7
Figure 3.	Control board architecture	12
Figure 4.	Control board layout	13
Figure 5.	MC Connector pin out	14
Figure 6.	ICC connector	15
Figure 7.	SDI connector	16
Figure 8.	Control board schematic	17
Figure 9.	STVD7 for InDART-STX Toolset configuration	20
Figure 10.	Motor type choice window	22
Figure 11.	"3 Phase BLAC/DC (trapezoidal)" basic parameters window	23
Figure 12.	"3 Phase BLAC/DC (trapezoidal)" advanced parameters window	25
Figure 13.	3 Phase AC induction motor (sinewave)" basic parameters window	26
Figure 14.	"3 Phase AC induction motor (sinewave)" advanced parameters window	28
Figure 15.	"3 Phase PMAC motor (sinewave)" basic parameters window	29
Figure 16.	"3 Phase PMAC motor (sinewave)" advanced parameters window	31
Figure 17.	ST7VD active project configuration	32
Figure 18.	System setup for programming phase	33
Figure 19.	Option byte settings	34
Figure 20.	Programming option auto window	35
Figure 21.	System setup for running phase	36

1 System architecture

The generic motor control system can be schematized as the arrangement of four blocks (see [Figure 2](#)):

- Control block
- Power block
- Motor
- Power supply

Figure 2. Motor control system architecture



The system proposed for the IGBT power module eval kit is composed of one control board STEVAL-IHM010V1, one power board STEVAL-IHM011V1, one motor and the power supply.

The control board STEVAL-IHM010V1 is a microcontroller (ST7MC) based board that provides the driving signals related to the motor selected and the driving strategies.

Driving signals are constituted of 6 PWM signals in the range of 0-5V paired in high side/low side pairs of one pair for each leg. In the system proposed three legs are present (three-phase inverter).

The power board STEVAL-IHM011V1 is based on the power module (STG3P2M10N60B) that converts the control signal to power signals in order to drive the motor (see Power Board User Manual for further details).

The connection between the control board and the power board is performed through dedicated a 32-pin connector called “motor control connector” (see [Section 5.1: MC Connector](#)).

The IGBT power module eval kit it is able to drive the following kinds of motors:

- AC induction motor, sensed
- Brushless permanent magnet motor (trapezoidal driven), sensed or sensorless
- Brushless permanent magnet motor (sinusoidal driven), sensed

The power board is supplied by a high voltage AC power supply 220 V (or 110 V) with the capability to generate current up to 10 amps.

2 Safety and operating instructions

2.1 General

During assembly and operation, the IGBT power module eval kit poses several inherent hazards, including bare wires, moving or rotating parts, and hot surfaces. There is danger of serious personal injury and damage to property, if it is improperly used or installed incorrectly.

All operations involving transportation, installation and use, as well as maintenance are to be carried out by skilled technical personnel (national accident prevention rules must be observed). For the purposes of these basic safety instructions, "skilled technical personnel" are suitably qualified people who are familiar with the installation, use, and maintenance of power electronic systems.

2.2 Reference design board intended use

The IGBT power module eval kit boards are components designed for demonstration purposes only, and shall not be used for electrical installation or machinery. The technical data as well as information concerning the power supply conditions shall be taken from the documentation and strictly observed.

2.3 Reference design board installation

The installation and cooling of the reference design boards shall be in accordance with the specifications and the targeted application (see [Section 7: Motor control demonstration](#)).

- The motor drive converters shall be protected against excessive strain. In particular, no components are to be bent, or isolating distances altered during the course of transportation or handling.
- No contact shall be made with other electronic components and contacts.
- The boards contain electrostatically sensitive components that are prone to damage through improper use. Electrical components must not be mechanically damaged or destroyed (to avoid potential health risks).

2.4 Electronic connection

Applicable national accident prevention rules must be followed when working on the main power supply with a motor drive. The electrical installation shall be completed in accordance with the appropriate requirements (e.g., cross-sectional areas of conductors, fusing, PE connections). For further information see [Section 7: Motor control demonstration](#).

2.5 Reference design board operation

A system architecture which supplies power to the IGBT power module eval kit boards shall be equipped with additional control and protective devices in accordance with the applicable safety requirements (e.g., compliance with technical equipment and accident prevention rules).

Warning: Do not touch the design boards after disconnection from the voltage supply, as several parts and power terminals which contain possibly energized capacitors need to be allowed to discharge.

3 ST7FMC2S4T6 Microcontroller functions

3.1 Main features

- TQFP44 package
- 16 K dual voltage FLASH program memory with read-out protection capability
- 768 bytes RAM (256 Stack bytes)
- Clock, Reset And Supply Management with:
 - enhanced reset system
 - enhanced low voltage supervisor (LVD) for main supply and auxiliary voltage detector (AVD) with interrupt capability
 - clock sources: crystal/ceramic resonator oscillators and by-pass for external clock, clock security system
 - four power saving modes: halt, active-halt, wait and slow
- configurable window watchdog timer
- nested interrupt controller with 14 interrupt vectors
- two 16-bit timers,
- one 8-bit auto-reload timer
- Serial Peripheral Interface (SPI)
- Serial Communication Interface (LINSPI™)
- Motor Controller (MTC) peripheral with:
 - 6 high sink Pulse Width Modulator (PWM) output channels
 - asynchronous Emergency Stop
 - analog inputs for rotor position detection
 - permanent magnet motor coprocessor including: multiplier, programmable filters, blanking windows and event counters
 - Op Amp and Comparator for current limitation
- 10-bit Analog-to-Digital Converter (ADC) with 11 inputs
- In-Circuit Communication Interface (ICC, debug)

Table 1. ST7FMC2S4T6 Functions

Function	I/O name	Description (depends on embedded software)
MTC	MCO0 to MCO5	PWM outputs
	MCIA, MCIB, MCIC	Analog or digital input for position sensor or B.E.M.F. detection
	MCV _{REF}	B.E.M.F. Detection comparator reference
	NMCES	Emergency stop
	OAP	Operational amplifier positive input
	OAN	Operational amplifier negative input
	OAZ	Operational amplifier output
	MCC _{REF}	Current limitation reference
	MCPWMU	PWM Output U
	MCPWMV	PWM Output V
	MCPWMW	PWM Output W
	MCZEM	Debug pin C/Z event
MCDEM	Debug pin C/D event	
SPI	MISO	Master In/slave out data
	MOSI	Master Out/slave In data
	SCK	Serial clock
LINSICI™	RDI	Received data input
	TDO	Transmit data output
10-bit ADC	AIN0	Temperature sensor input
	AIN1	Bus voltage sensing input
	AIN13	Trimmer P1 reading input
	AIN11	Trimmer P2 reading input
	AIN4	Trimmer P3 reading input
ICC	ICCCLK	Output serial clock
	ICCDATA	Input/Output serial data
	ICCSEL/Vpp	Programming voltage input
Other I/O	PC2	RBC Resistive Brake Control
	PC3	CTS Clear to send
	PE0	Start/Stop pushbutton
	PB0	LED management
16-bit Timer B	OCMP1_B	PFC_PWM ⁽¹⁾
	ICAPx_B	PFC_SYNC ⁽¹⁾

1. This function will be active only if it is available also in the power board.

4 Control board electrical characteristics

Stresses above the limit shown in [Table 2](#) may cause permanent damage to the device. This is a stress rating only and functional operation of the device under these conditions is not implied. Exposure to maximum rating conditions for extended periods may affect device reliability.

5 V Bias current measurement can be useful to check the working status of the board. If the measured value is considerably greater than the typical value, it means that some damage has occurred in the board.

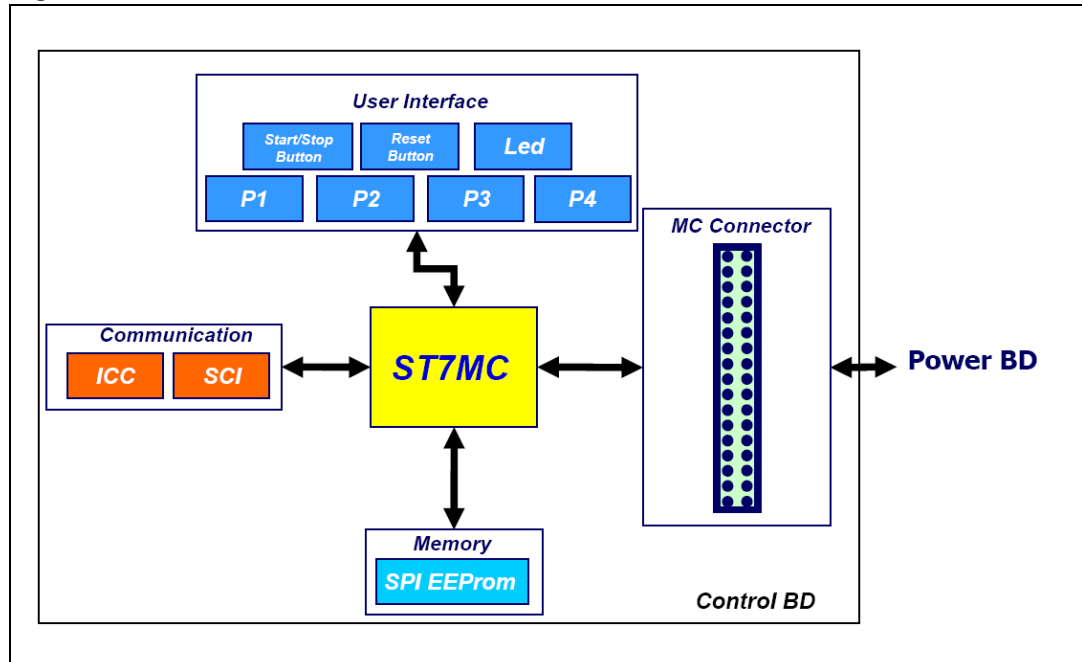
Table 2. Control board electrical characteristics

Control board parameters	STEVAL-IHM010V1		Unit
	Min	Max	
5 V Auxiliary supply range – J6	4.5	5.5	V
MC Connector pin 25 – 5V	4.5	5.5	V
MC Connector pin 28 – VDD Micro	4.5	5.5	V
5V Bias current (typical)	10	30	mA
MC PWM Output current (source)		25	mA
MC PWM Output current (sink)		50	mA
MC BEMF Input (sink)		25	mA
GP I/O Pin (source)		25	mA
GP I/O Pin (sink)		25	mA
HS I/O Pin (source)		25	mA

5 Board architecture

The STEVAL-IHM010V1 can be schematized as in [Figure 3](#).

Figure 3. Control board architecture



The heart of the control board is the ST7MC microcontroller which is provided with a dedicated peripheral to drive the three-phase brushless motor.

The user interface is constituted of four potentiometers (P1, P2, P3, P4) which are used to set parameters related to the specific drive, see [Section 7: Motor control demonstration](#).

Two push buttons are also present:

- Reset button for a "hardware reset" of the board.
- Start/stop button used to start and stop motor driving, see [Section 7: Motor control demonstration](#).

Two LEDs (green and red) provide information about the status of the system. Their behavior is related to the specific drive, see [Section 7: Motor control demonstration](#).

In normal functionality it is expected that the board is supplied by the MC connector, but for stand-alone operation, an auxiliary supply connector for 5 V power supply is included on the board. Providing more than 5.5 V through this connector may cause permanent damage to the device since no over voltage protection device is present.

The board is supplied with 4 Kbit EEPROM (M95040) connected to the micro by an SPI bus. To enable the onboard EEPROM memory, the jumper J2 must be closed and the debug feature must be disabled inside the firmware.

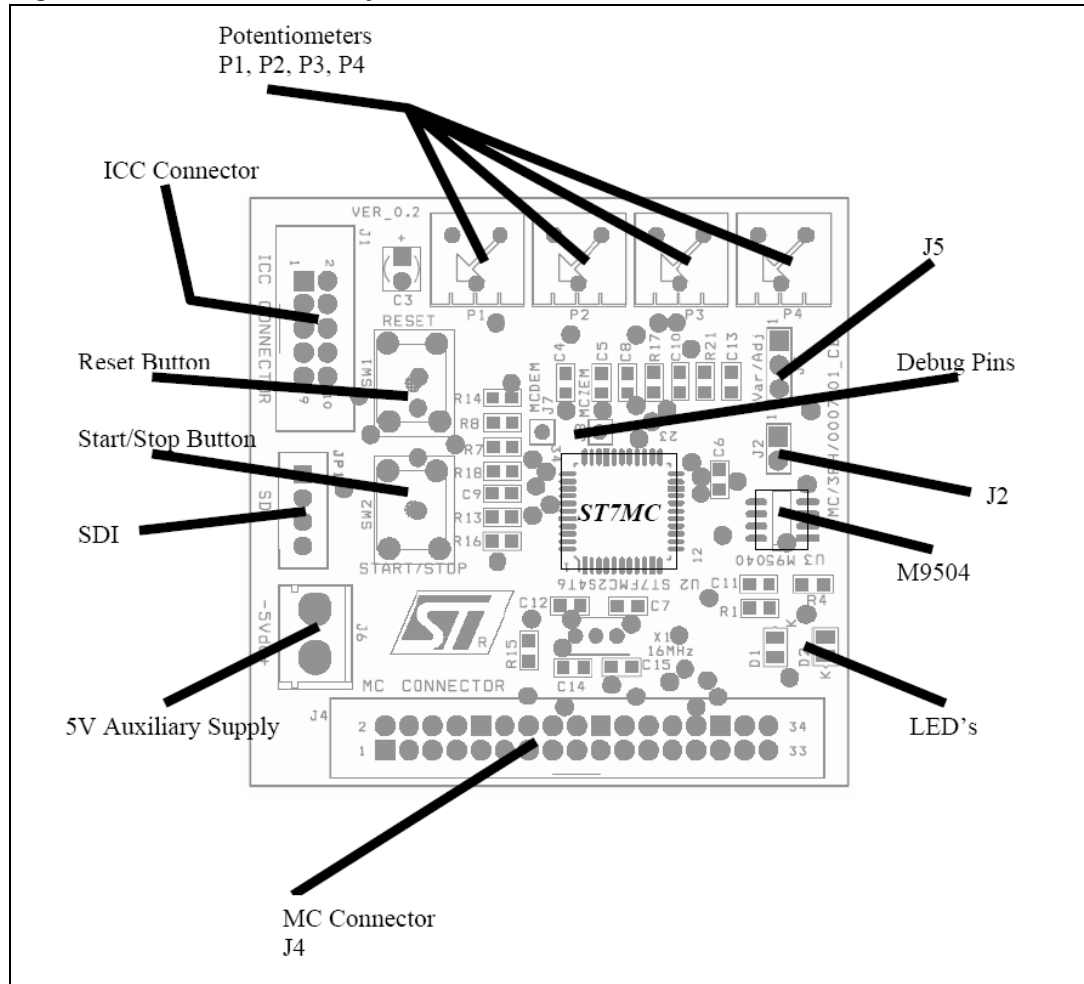
J5 can be set by the user by connecting a jumper between pins 1-2 or 2-3. This setting is related to a specific drive, see [Section 7: Motor control demonstration](#).

Two communication systems can be established with the microcontroller:

- ICC Used for programming/debugging purposes
- SCI Used for data exchange through SDI connector

The control board is connected to the power board through a specific connector (MC Connector).

Figure 4. Control board layout



5.1 MC Connector

The 34-pin MC connector has been designed as the standard to connect the control board to the power board. Following the configuration of the MC connector it is possible to design a different control board or power board preserving the compatibility between the two systems. For instance it is possible for any user to redesign the control board keeping the compatibility with the power board if the standard MC connector configuration is used.

Figure 5. MC Connector pin out

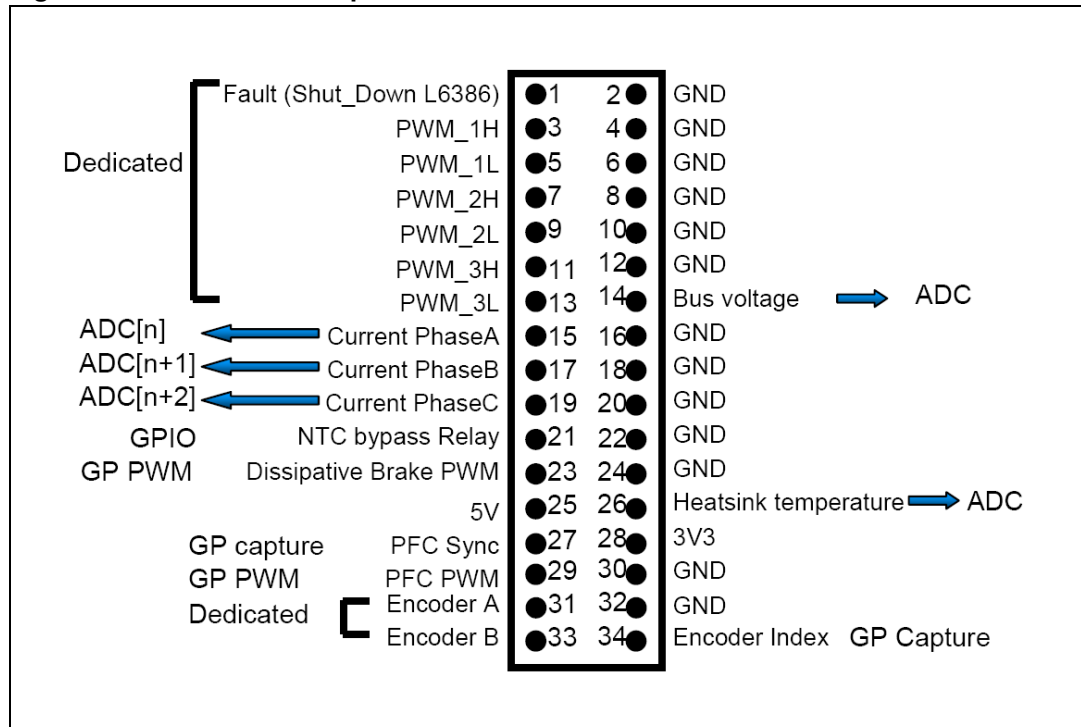


Table 3. Motor control connector

Pin N.	Description	Pin on ST7MC
1	Emergency stop	MCES
2	Ground	VSS
3	High side PWM phase A	MCO0
4	Ground	VSS
5	Low side PWM phase A	MCO1
6	Ground	VSS
7	High side PWM phase B	MCO2
8	Ground	VSS
9	Low side PWM phase B	MCO3
10	Ground	VSS
11	High side PWM phase C	MCO4
12	Ground	VSS
13	Low side PWM phase C	MCO5
14	BUS voltage	AIN1
15	Phase A current	
16	Ground	VSS
17	Phase B current	MCCFI

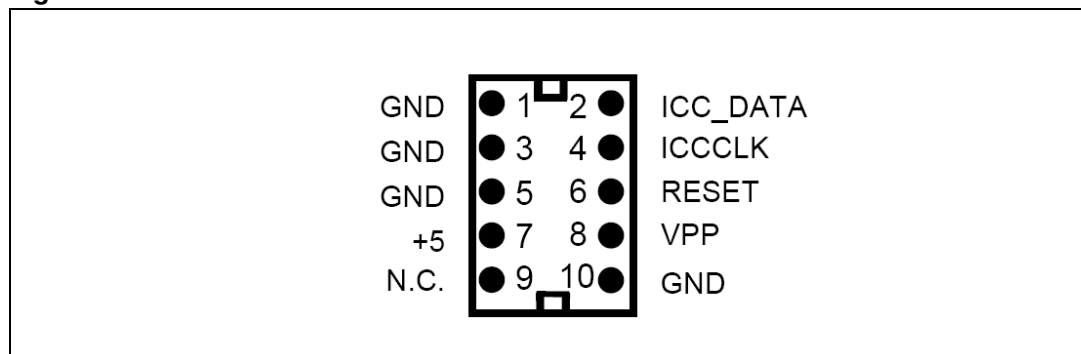
Table 3. Motor control connector (continued)

Pin N.	Description	Pin on ST7MC
18	Ground	VSS
19	Phase C current	
20	Ground	VSS
21	NTC PYPASS relay	
22	Ground	VSS
23	Dissipative BRAKE	PC2
24	Ground	VSS
25	5 V	VDD
26	HEATSINK temperature	AIN0
27	PFC SYNC	ICAPx_B
28	3V3	
29	PFC PWM	OCMP1_B
30	Ground	VSS
31	ENCODER A	MCIA
32	Ground	VSS
33	ENCODER B	MCIB
34	ENCODER index	MCIC

5.2 ICC connector

The ICC Connector is used to establish ICC communication for programming/debugging purposes. The pin out is shown in [Figure 6](#). This connector is compatible with Softec’s inDART-STX board (not included in the package).

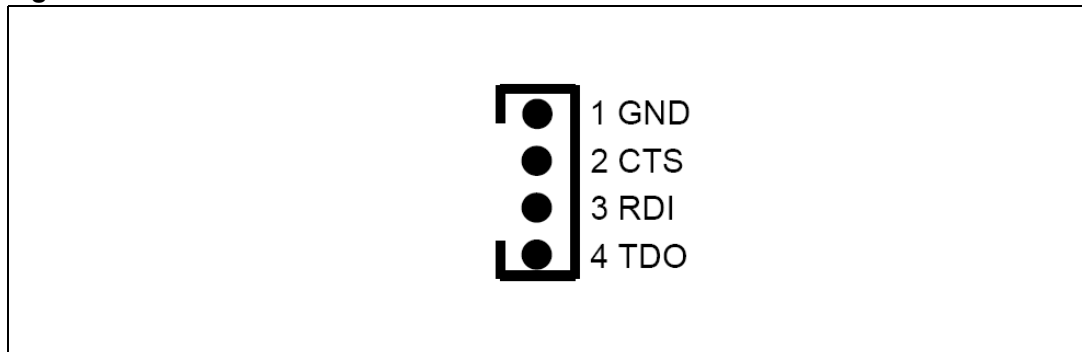
Figure 6. ICC connector



5.3 SDI Interface (Serial Data Interface)

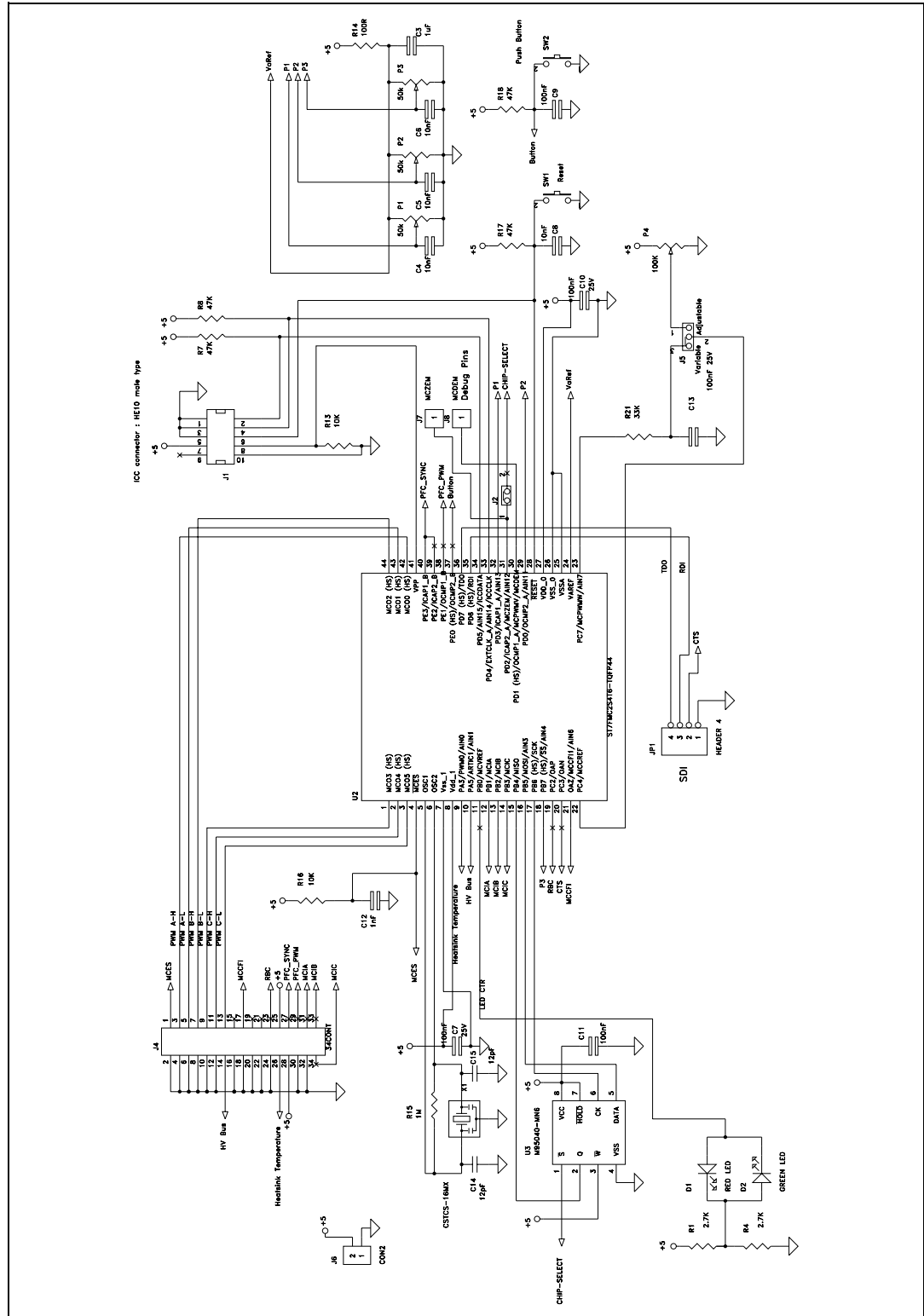
The board is provided with an SDI Interface able to establish SCI communication with an external device. We suggest using an isolation board between the SDI Interface and the external devices. The pin out it is shown in [Figure 7](#).

Figure 7. SDI connector



6 Board schematics

Figure 8. Control board schematic



7 Motor control demonstration

7.1 Environmental considerations

Warning: The IGBT Power Module Eval Kit must only be used in a power laboratory. The high voltage used in any HV drive system presents a serious shock hazard.

The kit is not electrically isolated from the AC input. This topology is very common in AC drives. The microprocessor is grounded by the integrated Ground of the DC bus. The microprocessor and associated circuitry are hot and MUST be isolated from user controls and serial interfaces.

Warning: Any measurement equipment must be isolated from the main power supply before powering up the motor drive. To use an oscilloscope with the kit, it is safer to isolate the AC supply AND the oscilloscope. This prevents a shock occurring as a result of touching any SINGLE point in the circuit, but does NOT prevent shocks when touching TWO or MORE points in the circuit.

An isolated AC power supply can be constructed using an isolation transformer and a variable transformer. A schematic of this AC power supply is in the application note, "AN438, TRIAC + Microcontroller: safety precautions for development tools." (Although this application note was written for TRIAC, the isolation constraints still apply for fast switching semiconductor devices such as IGBTs).

Note: Isolating the application rather than the oscilloscope is highly recommended in any case.

7.2 Hardware requirements

To set up the IGBT power module eval kit system the following items are required:

- The control board: STEVAL-IHM010V1
- The power board: STEVAL-IHM011V1
- 34-pin flat cable
- High voltage isolated AC power supply up to 220 V 10 A
- Isolated DC power supply up to 30 V 3 A
- Softec inDART-STX (not included in the package)
- Softec ICC Isolation board (not included in the package)
- Two 10-pin flat cables (not included in the package)
- AC Induction motor Selni (not included in the package)
- Brushless PM motor Ametek (not included in the package)
- Insulated oscilloscope (as needed)
- Insulated multimeter (as needed)

A complete laboratory setup consists of an isolated AC power supply, one AC Induction motor or one PM Brushless motor, and one isolated power supplies for +15 V (as needed).

7.3 Software requirements

To customize, compile, and download the motor control firmware, the following software must be installed:

- "IGBT PM EV KIT - GUI" (included in the CD-ROM)
- STVD7 for inDART-STX V.3.11 (also called "ST7 Toolset" downloadable from Softec's website: www.softecmicro.com)
- Cosmic Compiler - ST7 C Compiler 16 K Free Version - 4.5c (downloadable from Cosmic's website: www.cosmic-software.com)

7.3.1 Installing the software

- IGBT PM EV KIT - GUI installation

Insert the CD-ROM provided with the kit and execute Setup.exe.

- 3rd party software installation

Follow the instructions of related software to install and configure STVD7 for inDART-STX and Cosmic Compiler.

- Installation note

1. Install first Cosmic Compiler. Use the default installation folder:

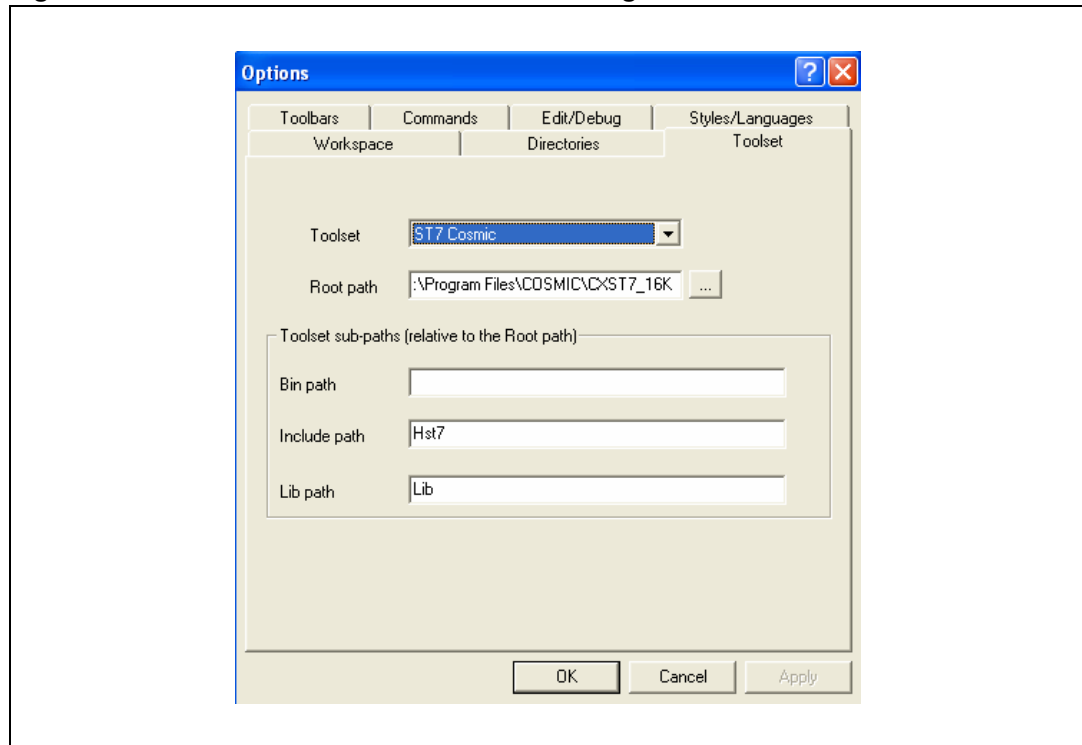
"C:\Program Files\COSMIC\CXST7_16K"

After installation, the product must be registered before using it. You can perform this procedure at any time by running the "Imreg16k.exe" file inside Cosmic's installation folder, complete the form and click on "register by email" button. You will receive a license file "license.lic" that must be copied inside the installation folder under "license" folder.

2. Then install STVD7 for inDART-STX.

During the first run of the software after installation, a prompt for the configuration of the toolset should appear. The toolset can be configured at any time by opening the "tools — options" inside stvd7. To do this, click "toolset", select the "Toolset" menu tab and select ST7Cosmic and configure as in [Figure 9](#).

Figure 9. STVD7 for InDART-STX Toolset configuration



7.4 Control board setup

7.4.1 Choosing the right firmware

Motor control firmwares are arranged according to the kind of motor to be driven and according the driving strategy. See [Table 4](#) to choose which firmware should be used.

Together with the installation of "IGBT PM EV KIT - GUI", the firmware source code is installed on the PC inside the installation folder under the name "PMK_Firm" folder.

Each firmware is stored inside the working folder under the same name as the firmware itself.

The following files are present inside each working folder:

- ".stw" file - STVD7 workspace file
- ".stp" file - STVD7 project file
- ".source" folder - Containing all .c and .h files required

Table 4. Firmware libraries arranged according to driving strategy

Firmware name	Description
AC_3PH_SR	to drive sensed AC Induction motor sinusoidal driven
BLAC_3PH_SR	to drive sensed PM brushless motor sinusoidal driven
BLDC_3PH_SL	to drive sensorless PM brushless motor trapezoidal driven
BLDC_3PH_SR	to drive sensed PM brushless motor trapezoidal driven

Note: We suggest making a backup copy of the original working folder for each firmware. The following procedure modifies the original content of the workspace folder without leaving the possibility to return to a previous step.

7.4.2 Configuring the firmware using GUI

Before "using" the firmware, it must be configured. The term "configure" indicates the act of selecting a specific driving strategy, such as open or closed loop, voltage or current mode and so on. The setting of customized parameters such as current limitation, motor settings, driving related parameters and so on is also indicated.

Configuring the firmware is performed by compiling a set of .h files inside the source folder and writing a series of values as fields of #define statements. To do this configuration, solid knowledge of the hardware and the architecture of the firmware is required. Otherwise, the configuration tool provided inside the CD-ROM called "IGBT PM EV KIT - GUI" can be used. This allows the user to select and set all required parameters visually and the software automatically generates the ".h" files required (refer to the ".h" files that constitute the configuration related to the firmware).

Table 5. Configuration ".h" files

Firmware name	Configuration files
AC_3PH_SR	ACMparam.h
	config.h
	Mainparam.h
	MTCparam.h
BLAC_3PH_SR	PMACparam.h
	config.h
	Mainparam.h
	MTCparam.h
BLDC_3PH_SL	MTC_Settings_Sensorless.h
	spec_settings.h
	version.h
BLDC_3PH_SR	MTC_Settings_Sensor.h
	spec_settings.h
	version.h

For a detailed description of the configuration files and how to manually customize the related parameters, see AN1904, AN1905, AN1947.

7.4.3 Motor type selection

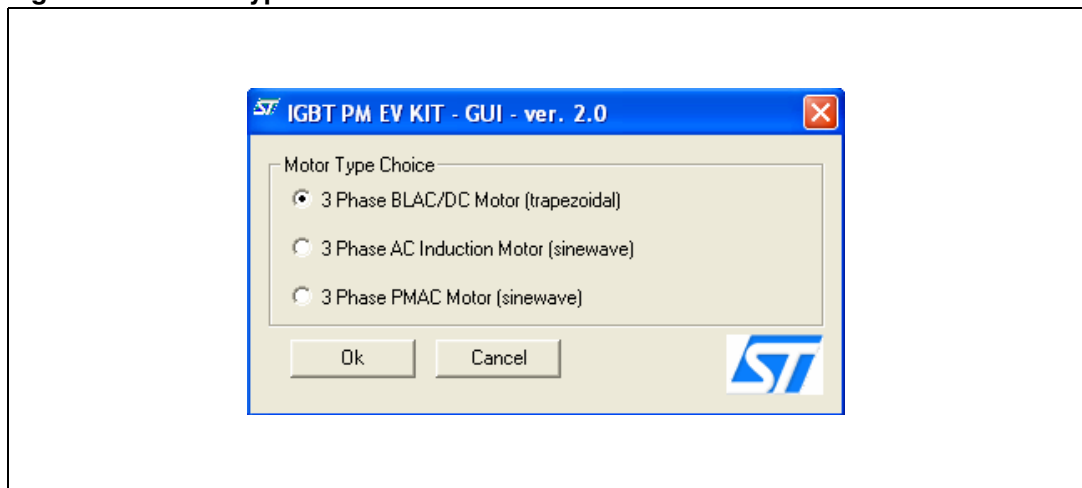
After "IGBT PM EV KIT - GUI" is started, the motor type choice dialog box appears (see [Figure 10](#)).

In this window the user can choose the kind of motor (AC Induction or PM brushless) and eventually the driving strategy (sinusoidal or trapezoidal).

The three options are:

- "3 Phase BLAC/DC (trapezoidal)" to select PM brushless motor trapezoidal driven,
- "3 Phase AC induction motor (sinewave)" to select AC Induction motor sinusoidal driven, and
- "3 Phase PMAC motor (sinewave)" to select PM Brushless motor sinusoidal driven.

Figure 10. Motor type choice window



The user must select the desired value and press OK.

7.4.4 "3 Phase BLAC/DC (trapezoidal)" settings

Figure 11. "3 Phase BLAC/DC (trapezoidal)" basic parameters window

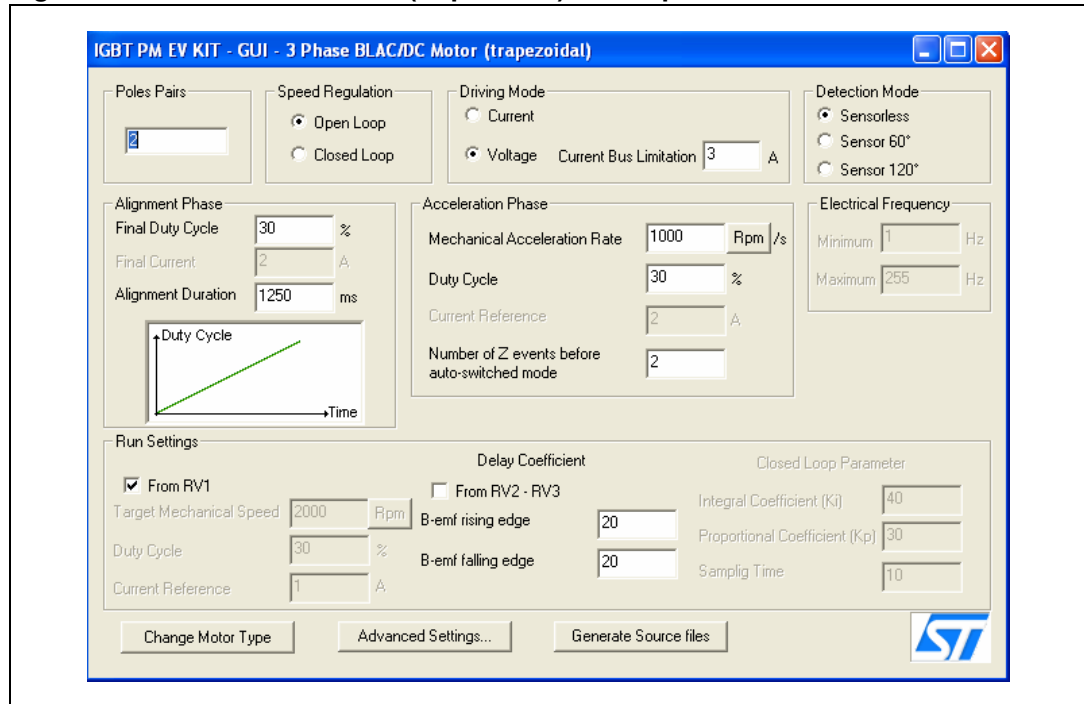


Table 6. "3 Phase BLAC/DC (trapezoidal)" basic parameters

Parameter name	Description
Poles pairs	the number of pole (north/south) pairs in the motor
Speed regulation	the manner in which to run the motor, either open loop (without speed regulation) or closed loop (with speed regulation)
Driving mode	the motor driving mode, current mode or voltage mode
Current bus limitation	the software current limitation value (only in voltage mode), if the current flowing inside one (of three) phases of the motor reaches this value, overcurrent is not generated but the pwm is managed to limit the current at this level.
Detection mode	the Back EMF (BEMF) detection mode (rotor position), either sensorless, hall (effect) sensor 60°, or hall (effect) sensor 120°
Alignment phase (only for sensorless mode)	
Final duty cycle	the percentage of final duty cycle applied at the end of alignment phase (only in voltage mode)
Final current	the value of current flowing inside the motor at the end of the "alignment phase" (only in current mode)
Alignment duration	the duration of the "alignment phase" in milliseconds (ms)
Acceleration phase (only for sensorless mode)	
Mechanical acceleration rate	the mechanical acceleration rate of the rotor during the ramp up in RPMs (or Hz) per second (alternate between RPM and Hz settings by clicking on the "RPM" button)

Table 6. "3 Phase BLAC/DC (trapezoidal)" basic parameters (continued)

Parameter name	Description
Duty cycle	the duty cycle percentage during the Ramp Up (only in voltage mode)
Current reference	the value of current flowing inside one (of three) phases of the motor at the end of the "acceleration phase" (only in current mode)
Number of Z events before auto-switched mode	the number of consecutive Z events that occur before the microcontroller runs the motor in autoswitched mode
Electrical frequency	
Minimum	the minimum target rotor frequency in closed loop, express in Hz
Maximum	the maximum target rotor frequency in closed loop, express in Hz
Run settings	
From RV1	when the "From RV1" checkbox is selected: Duty cycle value is defined by the RV1 potentiometer (only for voltage mode), or Current reference is defined by the RV1 potentiometer (only for current mode), or Target speed is defined by the RV1 potentiometer (only for closed loop) If this box is unchecked, the above parameters are set by the user.
Duty cycle	the Duty cycle percentage when the motor is run in "open loop" "voltage mode"
Current reference	The value of current flowing inside one (of three) phases of the motor at run time in "open loop" "current mode"
Target speed	the target mechanical (rotor) speed in RPMs (or Hz) if speed regulation is set to "closed loop" (alternate between RPM and Hz settings by clicking on the "RPM" button)
Delay coefficient From RV2-RV3	When the "From RV2 - RV3" checkbox is selected, the value of Rising Delay is defined by the RV2 potentiometer and the value of Falling Delay is defined by the RV3 potentiometer. If this box is unchecked, the above parameters are set by the user.
B-emf rising edge	the B-EMF rising edge delay coefficient value (from 0 to 255)
B-emf falling edge	the B-EMF falling edge delay coefficient value (from 0 to 255)
Closed loop parameter (only in closed loop)	
Integral coefficient (Ki)	the value of the Integral Coefficient (Ki) of the Proportional Integrative (PI) regulator
Proportional coefficient (Kp)	the value of the Proportional Coefficient (Kp) of the PI regulator
Sampling time	the regulation sampling time (in milliseconds)
Change motor type	the "change motor type" button enables the user to change the motor type (see Figure 10)
Advanced settings	the "advanced settings" button enables the user to set the advanced parameters (see Section 7.4.5: "3 Phase BLAC/DC (trapezoidal)" advanced settings)
Generate source files	the "generate source files" button enables the user to generate the configuration ".h" files shown in Table 5 - Configuration ".h" files . A "save" dialog window appears, where the user can select in which folder to create the file. User must choose the right "source" directory in the firmware working folder (see Section 7.4.1: Choosing the right firmware).

7.4.5 "3 Phase BLAC/DC (trapezoidal)" advanced settings

Clicking the "advanced settings" button (see [Figure 11](#)) opens the "advanced settings" dialog box (see [Figure 12](#)). This is where the advanced "3 phase BLAC/DC (trapezoidal)" motor type parameters are set.

Figure 12. "3 Phase BLAC/DC (trapezoidal)" advanced parameters window

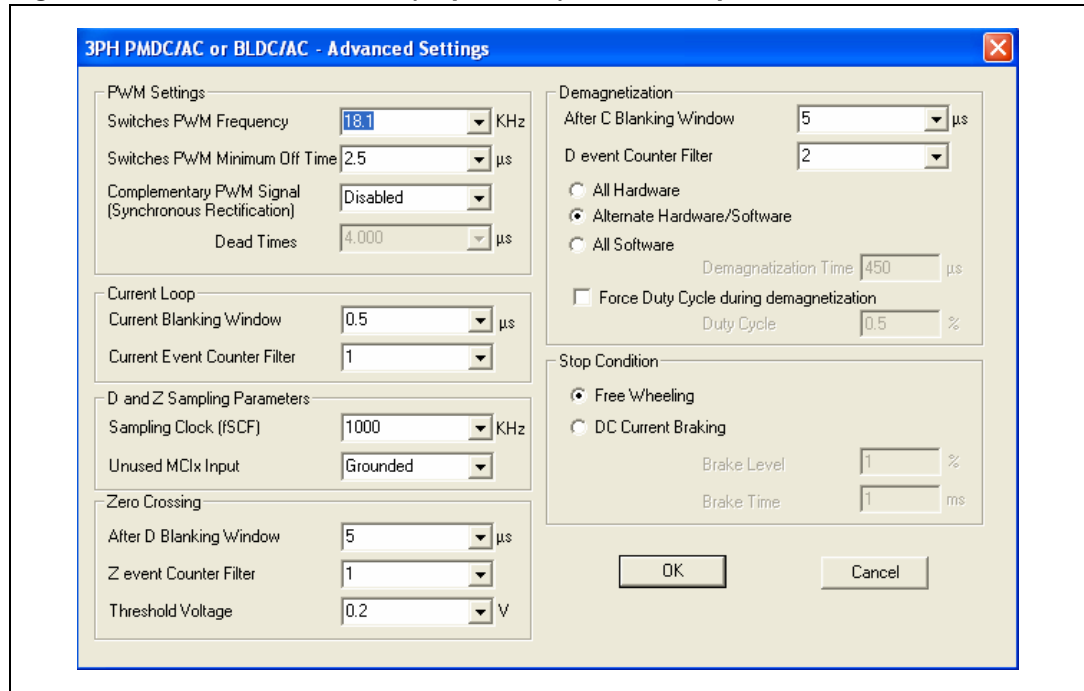


Table 7. "3 Phase BLAC/DC (trapezoidal)" advanced parameters

Parameter name	Description
Switches PWM frequency	Pulse Width Modulation (PWM) frequency in kHz
Switches PWM minimum off time	PWM minimum off time in microseconds (μ s) to detect the BEMF
Complementary PWM signal	if Synchronous rectification is enable or not
Dead time	value of dead time in μ s (only if Complementary PWM enabled)
Current loop	
Current blanking window	time window filter in millisecond to prevents erroneous sampling of the current after the PWM is turned ON
Current event counter filter	defines the number of counter events required to validate a current limitation event
D and Z Sampling parameters	
Sampling clock	sets the frequency of the sampling clock for D and Z events in kHz
Unused MCIx Input	defines in which state the unused MCI input is fixed, either "Grounded" or "Hi-Z"

Table 7. "3 Phase BLAC/DC (trapezoidal)" advanced parameters (continued)

Parameter name	Description
Zero crossing	
After D blanking window	sets the blanking window after a D event in microseconds (μ s)
Z event counter filter	defines the number of counter events required to validate a Z event
Threshold voltage	voltage set (in Volts) for Z detection
Demagnetization	
After C blanking window	sets the blanking window after a C event in microseconds (μ s)
D event counter filter	defines the number of counter events required to validate a D event
Demagnetization method	Three methods are available: "all hardware", "alternate hardware/software" or "all software"
Demagnetization time	fixed demagnetization time in microseconds (μ s) (only with demagnetization methods "all software")
Force duty cycle during demagnetization	allows using a different value of duty cycle rather than the one in run time setting
Duty cycle	value of duty cycle percentage forced during demagnetization
Stop condition	
Free wheeling	after Stop, the motor continues to spin freely
DC current braking	active brake obtained injected DC current into the motor
Brake level	value of duty cycle percentage of pwm brake signal
Brake time	duration in milliseconds of the active brake

7.4.6 "3 Phase AC induction motor (sinewave)" settings

Figure 13. 3 Phase AC induction motor (sinewave)" basic parameters window

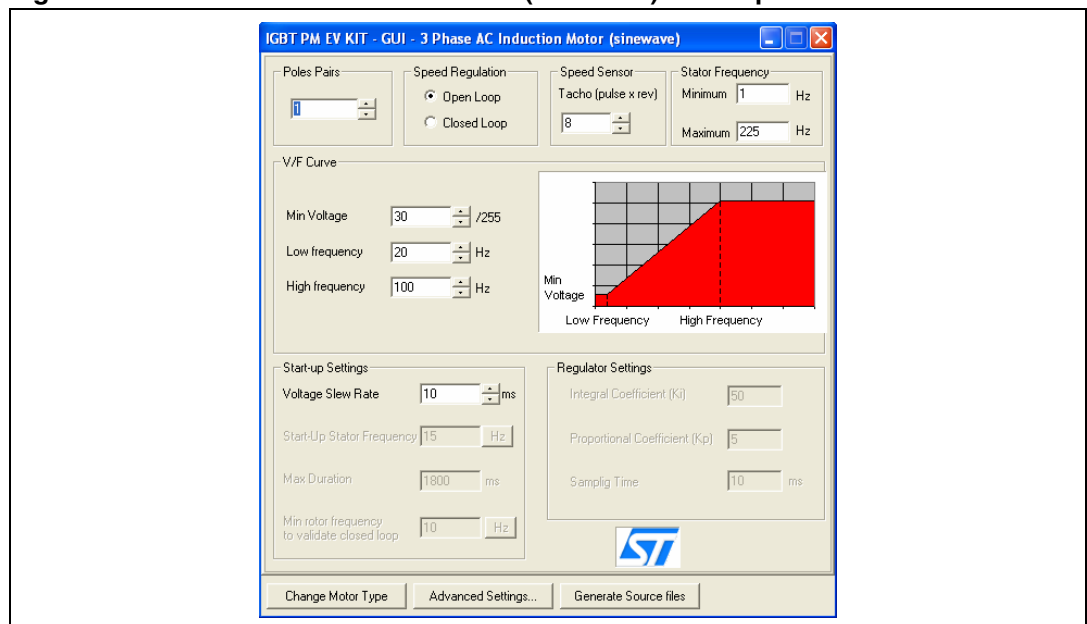


Table 8. “3 Phase AC induction motor (sinewave)” basic parameters

Parameter name	Description
Poles pairs	the number of pole (north/south) pairs in the motor
Speed regulation	the manner in which to run the motor, either open loop (without speed regulation) or closed loop (with speed regulation)
Speed sensor tacho (pulse x rev)	the number of pulses per revolution (of the speed sensor)
Stator frequency	
Minimum	sets the minimum stator frequency in Hz for open loop mode or minimum mechanical speed for closed loop mode
Maximum	sets the maximum stator frequency in Hz for open loop mode or maximum mechanical speed for closed loop mode
V/F (Voltage vs. frequency) curve	
Min voltage	sets the voltage level (expressed as a part of the 255 th of the bus voltage) in the first corner of the V/F curve
Low frequency	sets the frequency of the first corner of the V/F curve in Hz
High frequency	sets the frequency of the second corner of the V/F curve in Hz
Startup settings	
Voltage slew rate	affects the slew rate of the voltage during the motor start-up phase before reaching the potentiometer set value (only in open loop)
Start-Up stator frequency	sets the stator frequency during the start-up sequence (only in closed loop)
Max duration	sets the maximum duration of the start-up sequence in milliseconds (ms) (only in closed loop)
Min rotor frequency to validate closed loop	sets the rotor speed or frequency to validate the Closed Loop mode (only in closed loop)
Regulator settings	
Integral Coefficient (Ki)	sets the value of the Integral Coefficient (Ki) of the Proportional Integrative (PI) regulator
Proportional Coefficient (Kp)	sets the value of the Proportional Coefficient (Kp) of the PI regulator
Sampling time	sets the regulator sampling frequency in milliseconds (ms)
Change motor type	the “change motor type” button enables the user to change the motor type (see Figure 10)
Advanced settings	the “Advanced settings” button enables the user to set the advanced parameters (see Section 7.4.7: “3 Phase AC induction motor (sinewave)” advanced settings)
Generate source files	the “Generate source files” button enables the user to generate the configuration “.h” files shown in Table 5 - Configuration “.h” files . A “save” dialog window appears, where the user can select in which folder to create the file. User must choose the right “Source” directory in the firmware working folder (see Section 7.4.1: Choosing the right firmware).

7.4.7 "3 Phase AC induction motor (sinewave)" advanced settings

Clicking the "advanced settings" button (see [Figure 13](#)) opens the "advanced settings" dialog box (see [Figure 14](#)). This is where the advanced "3 Phase AC induction motor (sinewave)" motor type parameters are set.

Figure 14. "3 Phase AC induction motor (sinewave)" advanced parameters window

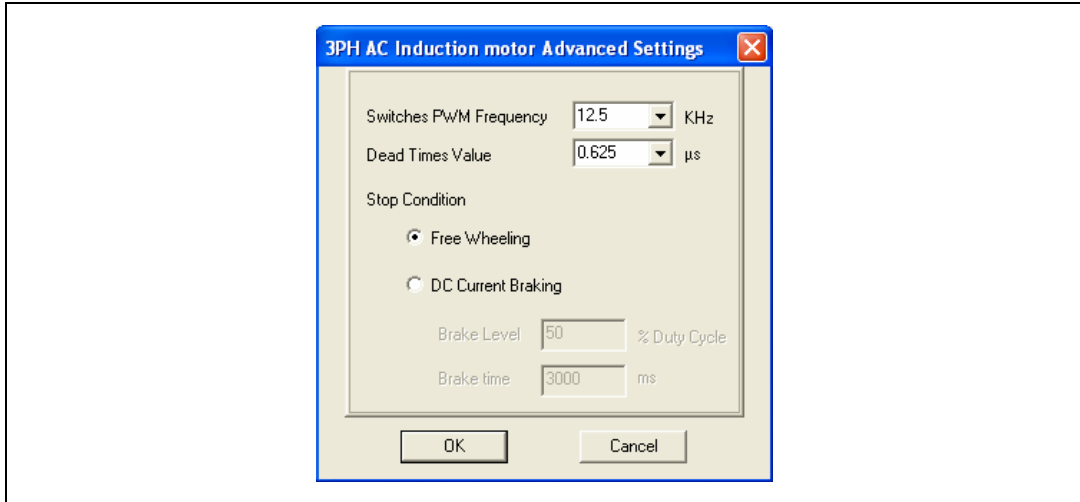


Table 9. "3 Phase AC induction motor (sinewave)" advanced parameters

Parameter name	Description
Switches PWM frequency	Pulse Width Modulation (PWM) frequency in kHz
Dead times value	select from available preset dead time duration values in microseconds (μs)
Stop condition	
Free wheeling	after stopping, the motor continues to spin freely
DC current braking	active brake obtained injected DC current into the motor
Brake level	value of duty cycle percentage of pwm brake signal
Brake time	duration in milliseconds of the active brake

7.4.8 "3 Phase PMAC motor (sinewave)" settings

Figure 15. "3 Phase PMAC motor (sinewave)" basic parameters window

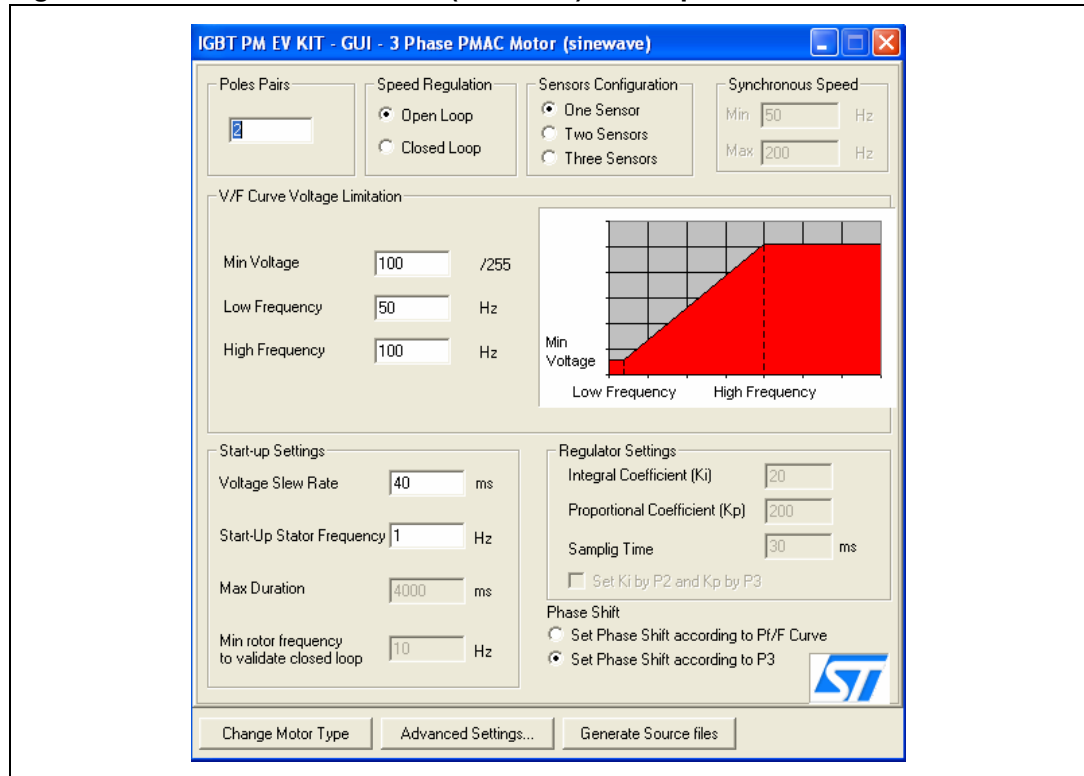


Table 10. "3 Phase PMAC motor (sinewave)" basic parameters

Parameter name	Description
Poles pairs	the number of Pole (north/south) pairs in the motor
Speed regulation	the manner in which to run the motor, either open loop (without speed regulation) or closed loop (with speed regulation)
Sensor configuration	the number of Hall sensors on the motor <ul style="list-style-type: none"> – One sensor – Two sensors – Three sensors
Synchronous speed	
Min	sets the target minimum stator frequency in Hz for closed loop mode
Max	sets the target maximum stator frequency in Hz for closed loop mode
V/F (Voltage vs. Frequency) curve limitation	
Min voltage	sets the voltage level (expressed as a part of the 255 th of the bus voltage) in the first corner of the V/F curve
Low frequency	sets the frequency of the first corner of the V/F curve in Hz
High frequency	sets the frequency of the second corner of the V/F curve in Hz

Table 10. "3 Phase PMAC motor (sinewave)" basic parameters (continued)

Parameter name	Description
Start-up settings	
Voltage slew rate	affects the slew rate of the voltage during the motor start-up phase before reaching the potentiometer set value (only in open loop)
Start-up stator frequency	sets the stator frequency during the start-up sequence (only in closed loop)
Max duration	sets the maximum duration of the start-up sequence in milliseconds (ms) (only in closed loop)
Min rotor frequency to validate closed loop	sets the rotor speed or frequency to validate the Closed Loop mode (only in closed loop)
Regulator settings	
Integral coefficient (Ki)	sets the value of the Integral Coefficient (Ki) of the Proportional Integrative (PI) regulator
Proportional coefficient (Kp)	sets the value of the Proportional Coefficient (Kp) of the PI regulator
Sampling time	sets the regulator sampling frequency in milliseconds (ms)
Phase shift	
Set phase shift according to Ph/F curve	software sets (in run time) the actual Phase Shift from the Ph/F curve defined in the advanced settings (based on the rotor speed).
Set Phase Shift according by P3	manual setting of the Phase Shift using potentiometer P3; the maximum CCW position is 0° of Phase Shift and the maximum CW position is 360° of Phase Shift.
Change motor type	the "change motor type" button enables the user to change the motor type (see Figure 10)
Advanced settings	the "Advanced Settings" button enables the user to set the advanced parameters (see Section 7.4.9: "3 Phase PMAC Motor (sinewave)" advanced settings)
Generate source files	the "generate source files" button enables the user to generate the configuration ".h" files shown in Table 5 - Configuration ".h" files. A "Save" dialog window appears, where the user can select in which folder to create the file. User must choose the right "Source" directory in the firmware working folder (see Section 7.4.1: Choosing the right firmware).

7.4.9 "3 Phase PMAC Motor (sinewave)" advanced settings

Clicking the "advanced settings" button (see [Figure 15](#)) opens the "advanced settings" dialog box (see [Figure 16](#)). This is where the advanced "3 Phase PMAC motor (sinewave)" motor type parameters are set.

Figure 16. "3 Phase PMAC motor (sinewave)" advanced parameters window

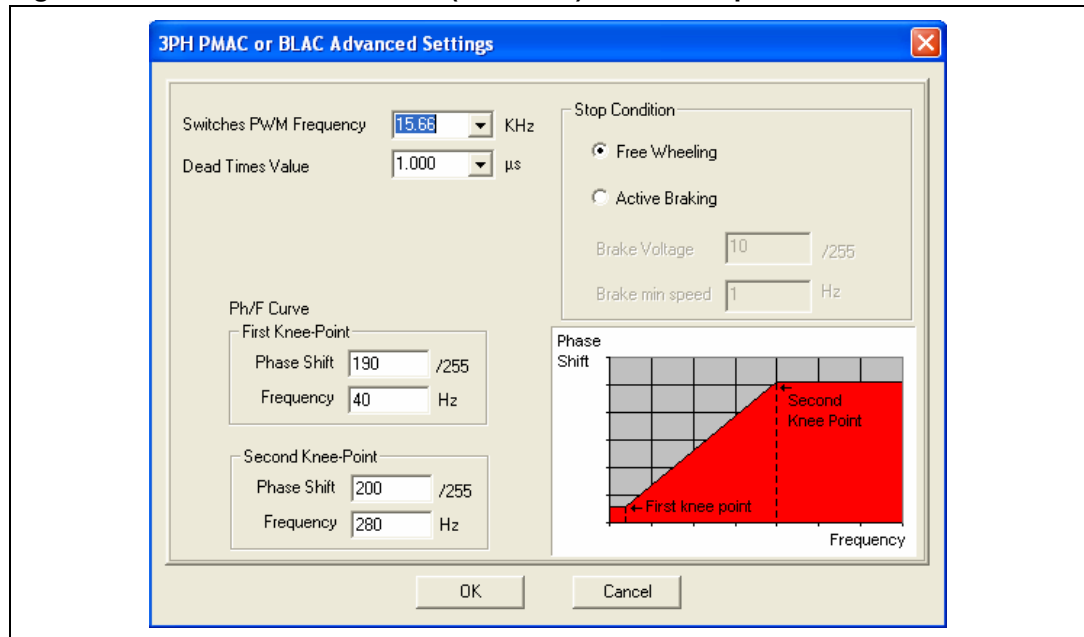


Table 11. "3 Phase PMAC motor (sinewave)" advanced parameters

Params name	Description
Switches PWM frequency	Pulse Width Modulation (PWM) Frequency in kHz
Dead times value	selects from available preset dead time duration values in microseconds (μ s)
Ph/F curve	Software uses this curve to set the value of the phase shift based on the actual value of the rotor frequency when the "set phase Shift according to Ph/F curve" option is set in the main window. The curve is a linear interpolation between two knee-points.
First knee-point	
Phase shift	sets the value of phase shift of the first knee-point of the curve
Frequency	sets the value of frequency of the first knee-point of the curve
Second knee-point	
Phase shift	sets the value of phase shift of the second knee-point of the curve
Frequency	sets the value of frequency of the second knee-point of the curve
Stop condition	
Free wheeling	after stopping, the motor continues to spin freely
Active braking	the motor is braked generating a stator field 90° in advance with respect to the rotor field
Brake voltage	voltage level (expressed as a part of the 255 th of the bus voltage) of the active braking stator field
Brake min speed	brake stays active until the motor is brought below this rotor frequency

7.4.10 Changing the maximum current allowed by GUI

The maximum current allowed by GUI has been set to 4.1 amps. This value may be changed by modifying the file "gui.ini" inside the folder where the file "IGBT PM EV KIT - GUI" is installed.

Open the "gui.ini" file using the notepad and change the value of the following line:
 MAX_CURRENT = 4.1

Replace the value 4.1 with the desired value of current limitation. Remember that also the hardware current limitation must be changed accordingly, see power board user manual to know how to modify this limitation.

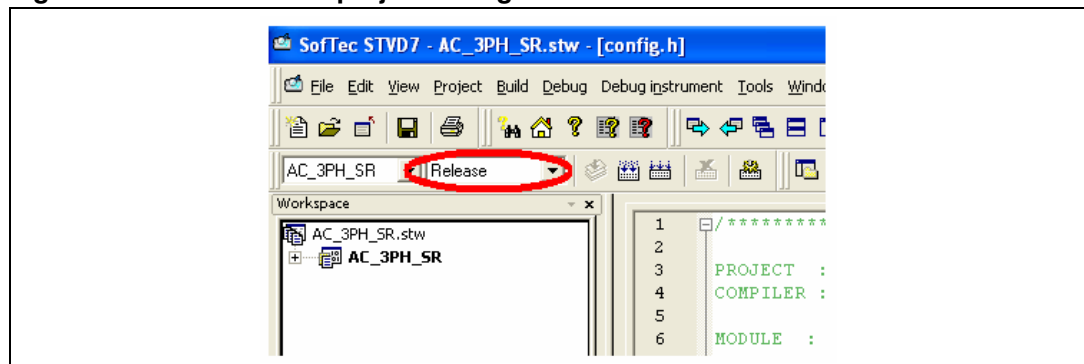
7.4.11 Compiling the firmware

Once the configuration files have been produced (manually or using the GUI), the binary executable file (.s19) must be compiled and produced.

To do this, the STVD7 for inDART-STX is used with the Cosmic Compiler ([Section 7.3: Software requirements](#))

1. Run the STDV7 for inDART-STX and choose "File > open workspace".
2. Select the workspace file under the "firmware working folder" depending on the motor type (see [Section 7.4.1: Choosing the right firmware](#)).
3. The default project in use is opened by the environment and is shown on the left side of the window below the opened ".stw" file.
4. Make sure that "Release" is set as the active project configuration (see [Figure 17](#)).

Figure 17. ST7VD active project configuration



5. Use the "build" pull-down menu to display and select the "rebuild all" command. The project will be compiled and built, and an executable file "<firmware name>.s19" will be generated inside "release" folder under the workspace.

Note: 1 Make sure that the following string is displayed inside the output pane after the building of the executable:

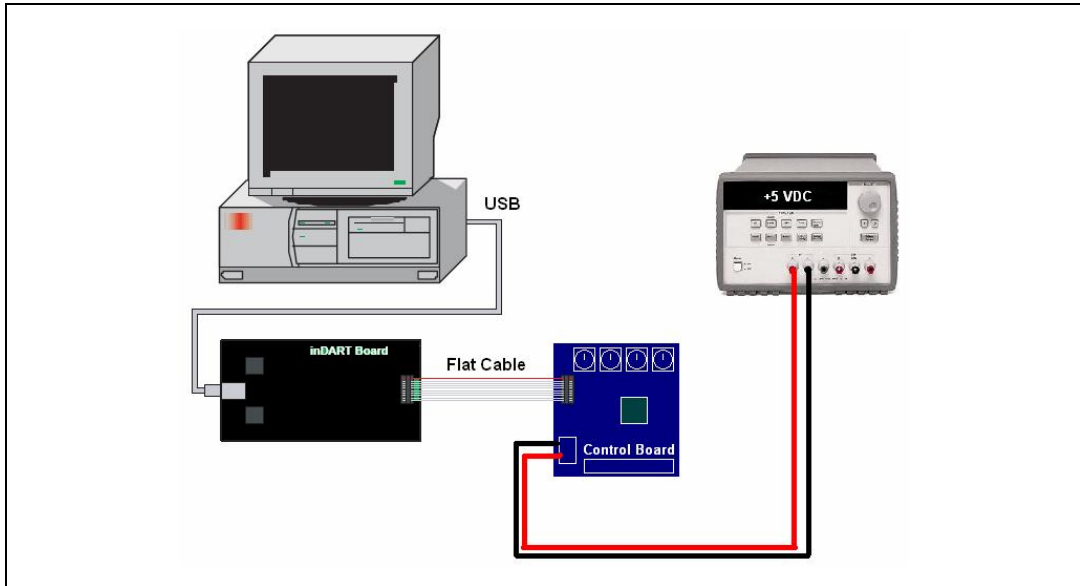
"<Firmware name>.elf - 0 error(s), 0 warning(s)"

- 2 After the building of the executable, ensure that the file "<firmware name>.s19" generated inside "release" folder under the workspace has been created. To do this, show the properties and check the creation date.

7.4.12 Programming the firmware

Before programming the firmware, the control board must be supplied and connected to the PC using the inDART board. We suggest setting up the system as in [Figure 18](#).

Figure 18. System setup for programming phase



1. Use the USB cable to connect the inDART-STX Board to the PC. The green "power" LED on the inDART-STX Board turns on. The Windows® operating system automatically detects the new hardware and loads the appropriate USB and inDART-STX drivers.
- 3 *Windows 2000® and Windows XP® may issue a warning the first time the inDART-STX Power Board is connected to the PC. The USB driver used by inDART-STX is not digitally signed by Microsoft, however, the user may safely ignore the warning since every kind of compatibility and security test has been carried out by Softec Microsystems.*
2. Connect the inDART Board with the control board J1 connector using the 10-pin flat cable.
3. Supply the control board using 5 V power supply connected to J6 observing the polarity.

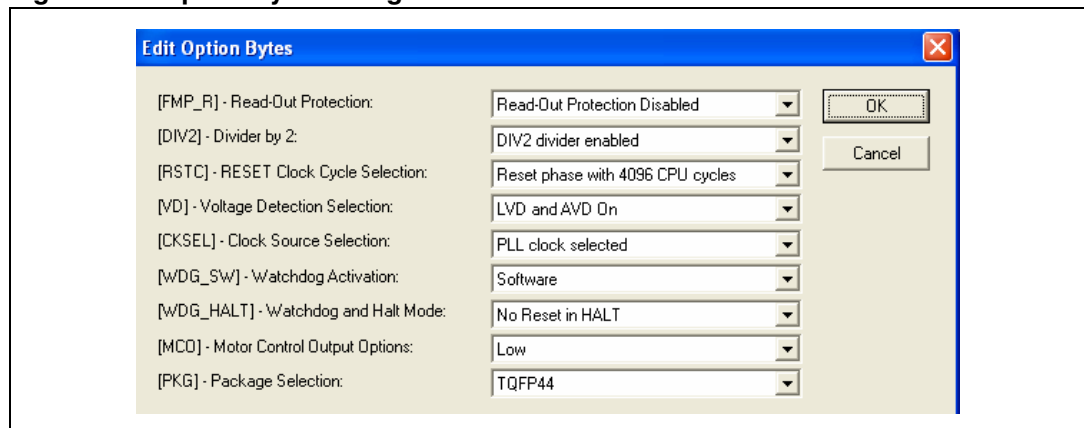
Once the ST7VD for inDART has been installed, the "datablaze programmer" utility that can be used to program the firmware using the inDART-STX can also be installed.

4. Run the Softec datablaze programmer utility.
 5. Click the "select device" button on the toolbar.
 6. In the "select device" window, select "inDART-STX" in the "programmer hardware" box, and "ST7FMC2S4" as the device code, and press OK.
- 4 *If an error occurs, make sure that the inDART-STX board is connected to the PC. A green LED lights up if the board is connected.*
7. Click on the file pull-down menu, select "open", then "code buffer".
 8. In the "load file to code buffer" dialog box format menu, select "motorola S-Rec" settings.
 9. Click the button near "name" box and select the binary code (.S19) to download into the microcontroller, and press "OK" (in order to know which binary code to select, see [Section 7.4.11: Compiling the firmware](#)).

7.4.13 Setup option byte

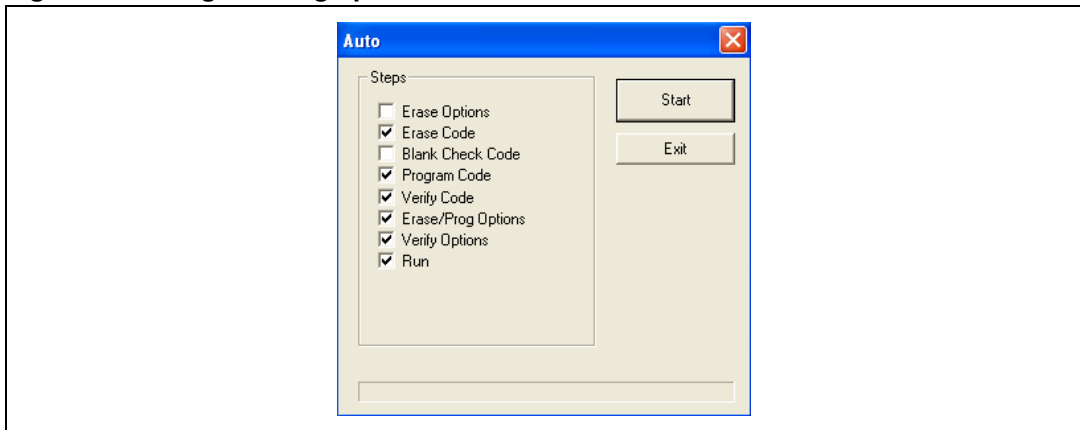
10. Press the "option byte" button in the toolbar and select the value as shown in the "Option Configuration" window (see [Figure 19](#)), and press "OK".

Figure 19. Option byte settings



11. Press the "Auto" button in the toolbar and select the programming options as shown in [Figure 20](#).

Figure 20. Programming option auto window



12. Press start to program the device.

If an error window appears, make sure that the inDART-STX board is connected to the ControlBDST7MC2 control board and that the control board is well supplied.

7.4.14 Jumper setting table

Table 12. Jumper settings

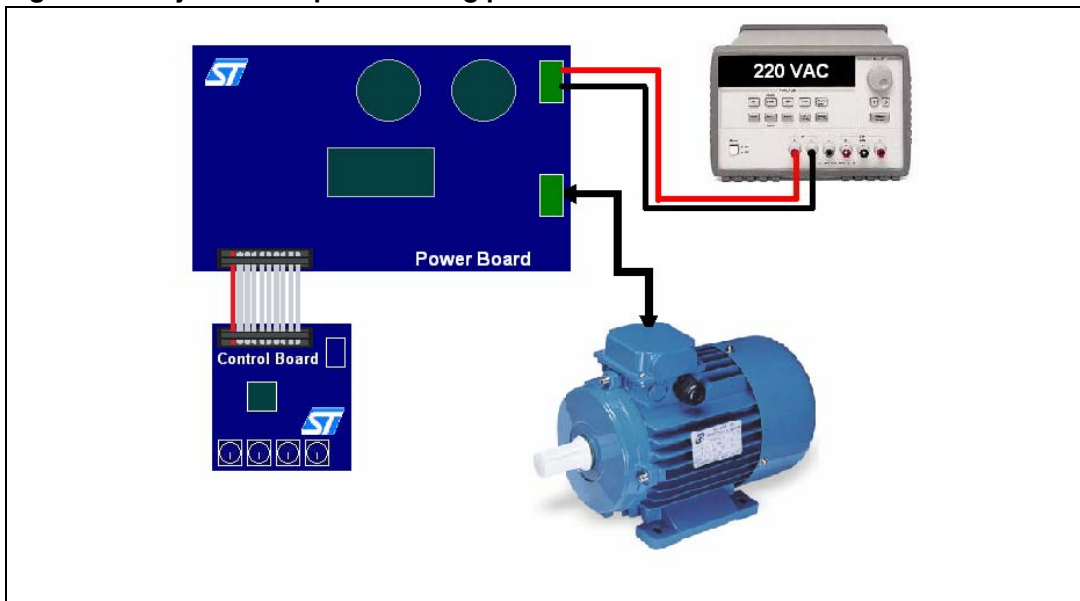
Name	Selection	Description
J2	Open	Disable the auxiliary flash memory M95040. Debug feature can be enabled.
	Closed	Enable the auxiliary flash memory M95040. Debug feature can not be enabled.
J5	Between 1-2	Adjustable – The current reference value (MCCREF) is set by potentiometer P4 – Only for “3 Phase BLAC/DC (trapezoidal)”
	Between 2-3	Variable – The current reference value (MCCREF) is driven by the microcontroller PWM-W - Only for “3 Phase BLAC/DC (trapezoidal)”
	Open	No current reference is required – For “3 Phase AC Induction Motor (sinewave)” and “3 Phase PMAC Motor (sinewave)”
J7		This point is connected to C & Z debug pin
J8		This point is connected to C & D debug pin

7.4.15 Board connection

After the board has been programmed, the system can be configured as shown in [Figure 21](#). This configuration is called a “running configuration”. The power board must be preventively configured (see the power board user manual). Remove the ICC flat cable from the control board if present.

1. Connect the insulated high voltage power supply to the J6 connector of STEVAL-IHM011V1 (Pin 2-3).
 2. Connect the 34-pin flat cable between the two MC connectors: J4 of control board and J3 of power board.
 3. Connect the phases of the motor to the power board J4 connector and, if required, connect the sensor signal to the Tachometer connector J2 or the hall sensor/encoder connector J1 based on the sensor present inside the motor and the driving strategy ([Section 7: Motor control demonstration](#)) (see power board user manual).
- 5 If required, connect a power supply with lower voltage output. For instance the Ametek motor requires the use of power supply voltage output of 30 V max.

Figure 21. System setup for running phase



7.5 Driving the AC induction motor

- 6 Before proceeding with the motor control demonstration, the power board STEVAL-IHM011V1 must be set up to drive the "3 phases AC induction motor" as described in the power board user manual.
- 7 Let's start the demonstration driving the AC induction motor in open loop mode. At this point please check that the control board has been set up for Open Loop driving (see [Section 7.4.6: "3 Phase AC induction motor \(sinewave\)" settings](#)).

7.5.1 Specific connection (sensor)

To drive the motor also in closed loop mode, the motor must include a Tachometer speed sensor. For this demonstration we suggest using one AC Induction Selnı Motor.

Connect the two sensor signal wires to the J2 connector of the power board STEVAL-IHM011V1 in any order.

7.5.2 Specific jumper settings

To set up the power board jumper, follow the instructions in the power board user manual. Open the J5 jumper on the control board. Keep J2 of the control board open.

7.5.3 LED behavior after power on

Turn on the power supply. For this demonstration the power supply output voltage should be set to 220 Vac and current limitation of the power supply should be set to 10 amp.

After power on the control board LED behavior should be the following:

- Green and red LEDs blink alternately signaling that the firmware has started to run.
- After a while the green LED stays on to indicate "idle state"

7.5.4 Setting of potentiometer

- Set P1 potentiometer to full counter clockwise.
- Set P2 potentiometer to full counter clockwise.

7.5.5 Run the motor (LED behavior)

- Push the Start/Stop button
- After pushing the button the LEDs toggle from green to red to indicate "RUN state"
- Rotate the P2 potentiometer clockwise while the motor start to run.

During any state: idle, start, run or brake, blinking of the red LED indicates a fault condition.

A fault condition is due to one of the following conditions:

- Hardware overcurrent: current flowing inside motor reaches a value greater than max current allowed 4 amp (see [Section 7.4.10: Changing the maximum current allowed by GUI](#))
- Over voltage: bus voltage reaches a value greater than 280 Vac.
- Over temperature: onboard temperature sensor measures a temperature greater than 60°.
- Startup failed: no signal from the tachometer sensor is present at the end of startup.
- Motor stalled: during the run of the motor, no tachometer sensor signal has been observed.

7.5.6 Changing real-time parameters

The real-time parameters can be changed using the potentiometers of the control board. [Table 13](#) explains the potentiometer functionality based on the driving strategy.

Table 13. Potentiometer functionality based on open/closed loop driving strategy

	Open loop	Closed loop
P1	sets the stator frequency value from minimum value to Maximum value configured (see Section 7.4.6: "3 Phase AC induction motor (sinewave)" settings)	sets the target rotor frequency value from minimum value to maximum value configured (see Section 7.4.6: "3 Phase AC induction motor (sinewave)" settings)
P2	sets the value of modulation index from 0% to 100% below the value imposed by the V/F curve limitation.	not used
P3	not used	not used
P4	not used	not used

7.5.7 Stop the motor (LED behavior)

Push the Start/Stop button to stop the motor. The LEDs toggle from green to red to indicate "idle state"

- 8 *It is possible to configure the system to drive the AC induction motor in closed loop and restart the demonstration from [Section 7.4.6: "3 Phase AC induction motor \(sinewave\)" settings](#).*

7.6 Driving the BLDC Motor (trapezoidal - sensorless)

- 9 *Before proceeding with the motor control demonstration, the power board STEVAL-IHM011V1 must be set up to drive "3 Phase BLAC/DC (trapezoidal - sensorless)" settings as described in the power board user manual.*
- 10 *Let's start the demonstration driving the brushless permanent magnet motor in voltage mode - open loop - sensorless. At this point please check that the control board has been set up for voltage mode - open loop - sensorless driving (see [Section 7.4.4: "3 Phase BLAC/DC \(trapezoidal\)" settings](#)).*

7.6.1 Specific connection (sensor)

To drive the motor also in closed loop mode it is not required that the motor include any position or speed sensor. For this demonstration we suggest using one Ametek BLDC Blower motor (voltage max 30 Vdc).

7.6.2 Specific jumper settings

To set up the power board jumper follow the instructions in the power board user manual for driving the BLDC motor (trapezoidal - sensorless). Close the J5 jumper on the control board between pin 2-3. Keep J2 of the control board open.

7.6.3 LED behavior after power on

Turn on the power supply. For this demonstration the power supply output voltage should be set to 30 Vdc and current limitation of the power supply should be set to 4 amp. After power on the control board LED behavior should be the following:

- Red LEDs blink signaling that the firmware has started to run.
- After a while a green LED stays on to indicate "idle state"

7.6.4 Setting of potentiometer

- Set P1 potentiometer in middle position from full counter clockwise to full clockwise.
- Set P2 potentiometer in middle position from full counter clockwise to full clockwise.
- Set P3 potentiometer in middle position from full counter clockwise to full clockwise.

7.6.5 Running the motor (LED behavior)

Push the start/stop button. After pushing the button the LEDs toggle from green to red to indicate "RUN state". The motor starts to run.

During any state: idle, start, run or brake, blinking of the red LED along with the brake of the motor indicates a fault condition.

A fault condition is due to one of the following conditions:

- Hardware overcurrent: current flowing inside motor reaches a value greater than max current allowed 4.1 amp ([Section 7.4.10: Changing the maximum current allowed by GUI](#))
- Over voltage: bus voltage reaches a value greater than 280 Vac.
- Over temperature: onboard temperature sensor measures a temperature greater than 60°.
- Startup failed: startup phase ends without getting a sufficient number of valid zero crossing events.
- Motor stalled: during the run of the motor no other zero crossing events have been observed.

11 *Blinking of the red LED during the running of the motor indicates that software current limitation is in action.*

7.6.6 Changing real-time parameters

The real-time parameters can be changed using the potentiometers of the control board. [Table 14](#) explains the potentiometer functionality based on the driving strategy.

Table 14. Potentiometer functionality based on open/closed loop driving strategy

Voltage mode		
	Open load	Closed loop
P1	sets the duty cycle percentage from 0% to the maximum duty cycle allowed.	sets the target rotor frequency value from Minimum value to Maximum value configured (see Section 7.4.4: "3 Phase BLAC/DC (trapezoidal) settings)

Table 14. Potentiometer functionality based on open/closed loop driving strategy (continued)

Voltage mode		
P2	sets the value of rising delay coefficient from 0 to 255	sets the value of rising delay coefficient from 0 to 255
P3	sets the value of falling delay coefficient from 0 to 255	sets the value of falling delay coefficient from 0 to 255
P4	not used	not used
Current mode		
	Open loop	Closed loop
P1	sets the current reference value from 0 A to maximum current allowed.	sets the target rotor frequency value from minimum value to Maximum value configured (see Section 7.4.4: "3 Phase BLAC/DC (trapezoidal)" settings)
P2	sets the value of rising delay coefficient from 0 to 255	sets the value of rising delay coefficient from 0 to 255
P3	sets the value of falling delay coefficient from 0 to 255	sets the value of falling delay coefficient from 0 to 255
P4	not used	not used

If during the configuration using GUI , the "From RV1" control has been unchecked, the value of duty cycle (or the value of current reference) is not set by P1, but has a fixed value.

If during the configuration using GUI, the "From RV2 - RV3" control has been unchecked, the value of the rising delay coefficient and the value of the falling delay coefficient are not set by P2 and P3, but have fixed values.

The maximum duty cycle allowed in voltage mode depends on the value of PWM frequency and the value of PWM min off time set by the GUI.

The maximum current allowed has been set to 4.1A. (see [Section 7.4.10: Changing the maximum current allowed by GUI.](#))

7.6.7 Stopping the motor (LED behavior)

Push the Start/Stop button to stop the motor. The LEDs toggle from green to red to indicate "idle state"

- 12 *It is possible to configure the system to drive the BLDC motor in current mode and or in closed loop and restart the demonstration from [Section 7.4.4: "3 Phase BLAC/DC \(trapezoidal\)" settings](#).*

7.7 Driving the BLDC Motor (trapezoidal - sensed)

- 13 *Before proceeding with the motor control demonstration, the power board STEVAL-IHM011V1 must be set up to drive "3 Phase BLAC/DC (trapezoidal - sensed)" settings as described in the power board user manual.*
- 14 *Let's start the demonstration driving the brushless permanent magnet motor in voltage mode - open loop - sensor 60°. At this point please check that the control board has been*

set up for voltage mode - open loop - sensor 60° driving (see [Section 7.4.4: "3 Phase BLAC/DC \(trapezoidal\)" settings](#)).

7.7.1 Specific connection (sensor)

To drive the motor, the motor must have three position sensors, in this case three hall sensors. For this demonstration we suggest using one Ametek BLDC Blower motor (voltage max 30 Vdc).

Refer to the descriptions in [Table 15](#) to connect the motor to the power board.

Table 15. "BLDC Sensored" motor connections

Motor	Power board
Phase A (red)	J4 pin 1
Phase B (yellow)	J4 pin 2
Phase C (black)	J4 pin 3
Hall sensor 1 (white)	J1 pin 1
Hall sensor 2 (green)	J1 pin 2
Hall sensor 3 (blue)	J1 pin 3
Hall sensor +5 V (red)	J1 pin 4
Hall ground (black)	J1 pin 5

7.7.2 Specific jumper settings

To set up the power board jumper, follow the instructions in the power board user manual for driving the BLDC motor (trapezoidal - sensored). Close the J5 jumper on the control board between pin 2-3. Keep J2 of the control board open.

7.7.3 LED behavior after power on

Turn on the power supply. For this demonstration the power supply output voltage should be set to 30 Vdc and current limitation of the power supply should be set to 4 amp. After power on, the control board LED behavior should be the following:

- Red LEDs blink signaling that the firmware has started to run.
- After a while a green LED stays on to indicate "idle state"

7.7.4 Setting of potentiometer

- Set P1 potentiometer in middle position from full counter clockwise to full clockwise.
- Set P2 potentiometer in full clockwise position.
- Set P3 potentiometer in full clockwise position.

7.7.5 Running the motor (LED behavior)

Push the start/stop button. After pushing the button the LEDs toggle from green to red to indicate "run state". The motor starts to run.

During any state: idle, start, run or brake, if the red LED stays on along with the brake of the motor, this indicates a fault condition. A fault condition is due to one of the following conditions:

- Hardware overcurrent: current flowing inside motor reaches a value greater than max current allowed 4.1 amp (see [Section 7.4.10: Changing the maximum current allowed by GUI](#))
- Over voltage: bus voltage reaches a value greater than 280 Vac.
- Over temperature: onboard temperature sensor measures a temperature greater than 60°.
- Startup failed: startup phase ends without getting a sufficient number of valid zero crossing events.
- Motor stalled: during the run of the motor no other zero crossing events have been observed.

15 *Blinking of the red LED during the running of the motor indicates that software current limitation is in action.*

7.7.6 Changing real-time parameters

The real-time parameters can be changed using the potentiometers of the control board. [Table 16](#) explains the potentiometer functionality based on the driving strategy.

Table 16. Potentiometer functionality based on open/closed loop driving strategy

Voltage mode		
	Open loop	Closed loop
P1	sets the duty cycle percentage from 0% to 100%.	sets the target rotor frequency value from minimum value to maximum value configured (see Section 7.4.4: "3 Phase BLAC/DC (trapezoidal)" settings)
P2	sets the value of rising delay coefficient from 0 to 255	sets the value of rising delay coefficient from 0 to 255
P3	sets the value of falling delay coefficient from 0 to 255	sets the value of falling delay coefficient from 0 to 255
P4	not used	not used
Current mode		
	Open loop	Closed loop
P1	sets the current reference value from 0 A to maximum current allowed.	sets the target rotor frequency value from minimum value to Maximum value configured (see Section 7.4.4: "3 Phase BLAC/DC (trapezoidal)" settings)
P2	sets the value of rising delay coefficient from 0 to 255	sets the value of rising delay coefficient from 0 to 255
P3	sets the value of falling delay coefficient from 0 to 255	sets the value of falling delay coefficient from 0 to 255
P4	not used	not used

If during the configuration using GUI, the "from RV1" control has been unchecked, the value of duty cycle (or the value of current reference) is not set by P1, but has a fixed value.

If during the configuration using GUI, the "From RV2 - RV3" control has been unchecked, the value of the rising delay coefficient and the value of the falling delay coefficient are not set by P2 and P3, but have fixed values.

The maximum current allowed has been set to 4.1 A. (see [Section 7.4.10: Changing the maximum current allowed by GUI.](#))

7.7.7 Stopping the motor (LED behavior)

Push the start/stop button to stop the motor. The LEDs toggle from green to red to indicate "idle state"

- 16 *It is possible to configure the system to drive the BLDC motor in current mode and or in closed loop and restart the demonstration from [Section 7.4.4: "3 Phase BLAC/DC \(trapezoidal\)" settings.](#)*

7.8 Driving the BLAC motor

- 17 *Before proceeding with the motor control demonstration, the power board STEVAL-IHM011V1 must be set up to drive "3 phase PMAC (sinusoidal - sensored)" settings as described in the power board user manual.*
- 18 *Let's start the demonstration driving the brushless permanent magnet motor in open loop. At this point please check that the control board has been set up for open loop driving (see [Section 7.4.8: "3 Phase PMAC motor \(sinewave\)" settings.](#))*

7.8.1 Specific connections (sensor)

To drive the motor, the motor must have three position sensors, in this case three Hall sensors. For this demonstration we suggest using one Ametek BLDC blower motor (voltage max 30 Vdc).

Refer to the descriptions in [Table 17](#) to connect the motor to the power board.

Table 17. "PMAC Sensored" motor connections

Motor	Power board
Phase A (red)	J4 pin 1
Phase B (yellow)	J4 pin 2
Phase C (black)	J4 pin 3
Hall sensor 1 (white)	J1 pin 1
Hall sensor 2 (green)	J1 pin 2
Hall sensor 3 (blue)	J1 pin 3
Hall sensor +5 V (red)	J1 pin 4
Hall ground (black)	J1 pin 5

7.8.2 Specific jumper settings

To set up power board jumper follow the instructions in the power board user manual for driving the PMAC motor (sensored). Open the J5 jumper on control board. Keep J2 of the control board open.

7.8.3 LED behavior after power on

Turn on the power supply. For this demonstration the power supply output voltage should be set to 30 Vdc and current limitation of the power supply should be set to 4 amp.

After power on the control board LED behavior should be the following:

- Green and red LEDs blink alternately signaling that the firmware has started to run.
- After a while a green LED stays on to indicate "idle state"

7.8.4 Setting of potentiometer

- Set P1 potentiometer in full counter clockwise position.
- Set P3 potentiometer in full counter clockwise position.

7.8.5 Running the motor (LED behavior)

Push the start/stop button. After pushing the button the LEDs toggle from green to red to indicate "RUN State". Turn P1 in clockwise direction. Keeping P1 fixed, turn P3 in clockwise direction until the motor runs.

- 19 *Turning the P3 potentiometer modifies the "phase shift" parameter. To optimize the driving the right value of this parameter must be set. Finding the optimum value of "phase shift" can be useful to monitor the DC current provided by the power supply. The user should try to fine tune the P3 potentiometer to minimize the current absorption. When this parameter is found, the potentiometer P3 can be left at this value for all future tests (ex. Closed loop).*

During any state: idle, start, run or brake, blinking of the red LED indicates a fault condition.

A fault condition is due to one of the following conditions:

- hardware overcurrent: current flowing inside motor reaches a value greater than max current allowed 4.1 amp (see [Section 7.4.10: Changing the maximum current allowed by GUI.](#))
- Over voltage: bus voltage reaches a value greater than 280 Vac.
- Over temperature: onboard temperature sensor measures a temperature greater than 60°.
- Startup failed: no signal from the tachometer sensor is present at the end of startup.
- Motor stalled: during the run of the motor no tachometer sensor signal has been observed.

7.8.6 Changing real-time parameters

The real-time parameters can be changed using the potentiometers of the control board. [Table 18](#) explains the potentiometer functionality based on the driving strategy.

Table 18. Potentiometer functionality based on open/closed loop driving strategy

	Open loop	Closed loop
P1	sets the voltage modulation index from 0% to 100% of bus voltage.	sets the target rotor frequency value from Minimum value to Maximum value configured (see Section 7.4.8: "3 Phase PMAC motor (sinewave)" settings)
P2	not used	not used

Table 18. Potentiometer functionality based on open/closed loop driving strategy (continued)

	Open loop	Closed loop
P3	manual setting of the phase shift; the maximum CCW position is 0° of phase shift and the maximum CW position is 360° of phase shift	manual setting of the phase shift; the maximum CCW position is 0° of phase shift and the maximum CW position is 360° of phase shift
P4	not used	not used

If during the configuration using GUI, the "Set Phase Shift according to Pf/F curve" control has been checked, the value of "phase shift" is not set by P3, but it is calculated as run time based on the Pf/F curve (see [Section 7.4.9: "3 Phase PMAC Motor \(sinewave\)" advanced settings](#)).

The maximum current allowed has been set to 4.1 A. (see [Section 7.4.10: Changing the maximum current allowed by GUI](#).)

7.8.7 Stopping the motor (LED behavior)

Push the Start/Stop button to stop the motor. The LEDs toggle from green to red to indicate "idle state"

Note: It is possible to configure the system to drive the PMAC motor in closed loop and restart the demonstration from [Section 7.4.8: "3 Phase PMAC motor \(sinewave\)" settings](#).

8 Bill of materials

Table 19. Bill of materials

Item	Qty	Reference	Part	
1	1	C3	1 μ F	25 V
2	4	C4,C5,C6,C8	10 nF	25 V
3	2	C7,C10	100 nF	25 V
4	2	C9,C11	100 nF	25 V
5	1	C12	1 nF	25 V
6	1	C13	100 nF	25 V
	2	C14,C15	12 pF	25 V
7	1	D1	Red LED	
8	1	D2	Green LED	
9	1	JP1	Connector 4 pin single line	
10	1	J1	ICC connector 10 pin double line	
11	1	J2	Strip line male 2 pin + jumper	
12	1	J4	MC connector 34 pin double line	
13	1	J5	Strip line male 3 pin + jumper	
14	1	J6	2 screw connector	
15	1	J7	Strip line male 1 pin	
16	1	J8	Strip line male 1 pin	
17	3	P1,P2,P3	50 k Ω	Potentiometer
18	1	P4	100 k Ω	Potentiometer
19	2	R1,R4	2.7 k Ω	
20	4	R7,R8,R17,R18	47 k Ω	
21	2	R13,R16	10 k Ω	
22	1	R14	100 Ω	
23	1	R15	1 Ω	
24	1	R21	33 k Ω	
25	1	SW1	Push button	
26	1	SW2	Push button	
27	1	U2	ST7FMC2S4T6-TQFP44	
28	1	U3	M95040-MN6	

9 References

This user manual provides information about using your STEVAL-IHM010V1 and its hardware features. For additional information about supporting software and tools, please refer to:

ST7MC Datasheet. Complete information about microcontroller features and peripherals.

ST7MC Motor Control related application notes. Complete information about motor control libraries developed for ST7MC microcontroller.

Web site <http://mcu.st.com/> . Dedicated to the complete STMicroelectronic's microcontroller portfolio.

Motor Control forum.

http://mcu.st.com/mcu/modules.php?mop=modload&name=Splatt_Forums&file=viewforum&forum=13

10 Revision history

Table 20. Revision history

Date	Revision	Changes
15-Jun-2007	1	First issue

Please Read Carefully:

Information in this document is provided solely in connection with ST products. STMicroelectronics NV and its subsidiaries ("ST") reserve the right to make changes, corrections, modifications or improvements, to this document, and the products and services described herein at any time, without notice.

All ST products are sold pursuant to ST's terms and conditions of sale.

Purchasers are solely responsible for the choice, selection and use of the ST products and services described herein, and ST assumes no liability whatsoever relating to the choice, selection or use of the ST products and services described herein.

No license, express or implied, by estoppel or otherwise, to any intellectual property rights is granted under this document. If any part of this document refers to any third party products or services it shall not be deemed a license grant by ST for the use of such third party products or services, or any intellectual property contained therein or considered as a warranty covering the use in any manner whatsoever of such third party products or services or any intellectual property contained therein.

UNLESS OTHERWISE SET FORTH IN ST'S TERMS AND CONDITIONS OF SALE ST DISCLAIMS ANY EXPRESS OR IMPLIED WARRANTY WITH RESPECT TO THE USE AND/OR SALE OF ST PRODUCTS INCLUDING WITHOUT LIMITATION IMPLIED WARRANTIES OF MERCHANTABILITY, FITNESS FOR A PARTICULAR PURPOSE (AND THEIR EQUIVALENTS UNDER THE LAWS OF ANY JURISDICTION), OR INFRINGEMENT OF ANY PATENT, COPYRIGHT OR OTHER INTELLECTUAL PROPERTY RIGHT.

UNLESS EXPRESSLY APPROVED IN WRITING BY AN AUTHORIZED ST REPRESENTATIVE, ST PRODUCTS ARE NOT RECOMMENDED, AUTHORIZED OR WARRANTED FOR USE IN MILITARY, AIR CRAFT, SPACE, LIFE SAVING, OR LIFE SUSTAINING APPLICATIONS, NOR IN PRODUCTS OR SYSTEMS WHERE FAILURE OR MALFUNCTION MAY RESULT IN PERSONAL INJURY, DEATH, OR SEVERE PROPERTY OR ENVIRONMENTAL DAMAGE. ST PRODUCTS WHICH ARE NOT SPECIFIED AS "AUTOMOTIVE GRADE" MAY ONLY BE USED IN AUTOMOTIVE APPLICATIONS AT USER'S OWN RISK.

Resale of ST products with provisions different from the statements and/or technical features set forth in this document shall immediately void any warranty granted by ST for the ST product or service described herein and shall not create or extend in any manner whatsoever, any liability of ST.

ST and the ST logo are trademarks or registered trademarks of ST in various countries.

Information in this document supersedes and replaces all information previously supplied.

The ST logo is a registered trademark of STMicroelectronics. All other names are the property of their respective owners.

© 2007 STMicroelectronics - All rights reserved

STMicroelectronics group of companies

Australia - Belgium - Brazil - Canada - China - Czech Republic - Finland - France - Germany - Hong Kong - India - Israel - Italy - Japan - Malaysia - Malta - Morocco - Singapore - Spain - Sweden - Switzerland - United Kingdom - United States of America

www.st.com