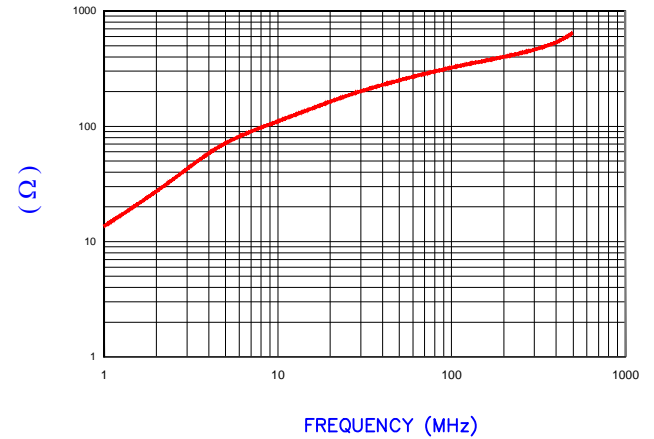


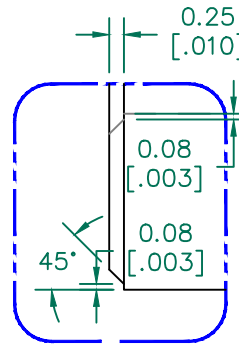
IMPEDANCE ( Z )			
Frequency	25 MHz	100 MHz	300 MHz
Nominal (REF)	182 Ω	322 Ω	473 Ω
Minimum	- Ω	258 Ω	- Ω

Z vs. FREQUENCY  
(REF. ONLY)

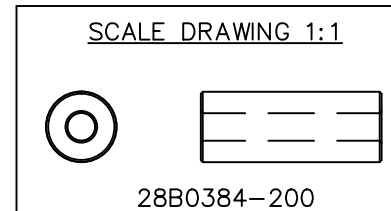


AGILENT E4991A Impedance/Material Analyzer  
HP 16092A Test Fixture, REF #3859

**UNCONTROLLED  
DOCUMENT**



DETAIL "A"  
CHAMFER  
SCALE=8:1



NOTES: UNLESS OTHERWISE SPECIFIED

1. COSMETIC SPECIFICATION REFER TO WI-QA-038.

FERRITE CORE DIMENSIONS (SPEC): mm [in]

A	9.75 [.384]	±	0.20 [.008]
B	3.80 [.150]	±	0.15 [.006]
C	25.00 [.984]	±	0.41 [.016]

WEIGHT/1000    7.82 kgs    17.23 lbs

DIMENSIONS ARE IN mm (INCHES).				This print is the property of Laird Tech. and is loaned in confidence subject to return upon request and with the understanding that no copies shall be made without the written consent of Laird Tech. All rights to design or invention are reserved.		Laird	
E	UPDATE THE LOGO	05/13/15	QIU	PROJECT/PART NUMBER:	REV	PART TYPE:	DRAWN BY:
D	UPDATE COMPANY LOGO	12/28/12	QIU	28B0384-200	E	FERRITE CORE	JRK
C	UPDATE Z SPECS AND COMPANY LOGO	05/25/07	JRK	DATE:	SCALE:	MATERIAL:	
B	CORRECT INCHES ON C DIM, UPDATE PART WGT	03/02/04	JRK	02/03/04	3 : 1	FERRITE	
A	ORIGINAL DRAFT	02/03/04	JRK	CAD #	TOOL #		
REV	DESCRIPTION	DATE	INT	28B0384-200-E	B0384		