

| TABLE 1 | |
|-------------------------|------------|
| PART NUMBER | "B" |
| SCRUS-17-X-XX-XX-AMS-AM | 30[1.18] |
| SCRUS-17-X-XX-XX-BMS-BM | 30[1.18] |
| SCRUS-17-X-XX-XX-AMS-BC | 15[.59] |
| SCRUS-17-X-XX-XX-BMS-BC | 15[.59] |
| SCRUS-17-X-XX-XX-BMS-AM | 30[1.18] |
| SCRUS-17-X-XX-XX-AMS-BM | 30[1.18] |
| SCRUS-17-X-XX-XX-BMS-MB | 23.5[.925] |
| SCRUS-17-X-XX-XX-AMS-MB | 23.5[.925] |

DO NOT SCALE FROM THIS PRINT

DESIGNED & DIMENSIONED IN MILLIMETERS[INCHES]

THIS PRODUCT MANUFACTURED WITH LEAD-FREE PROCESSING

SCRUS-17-X-XX.XX-XXX-XX

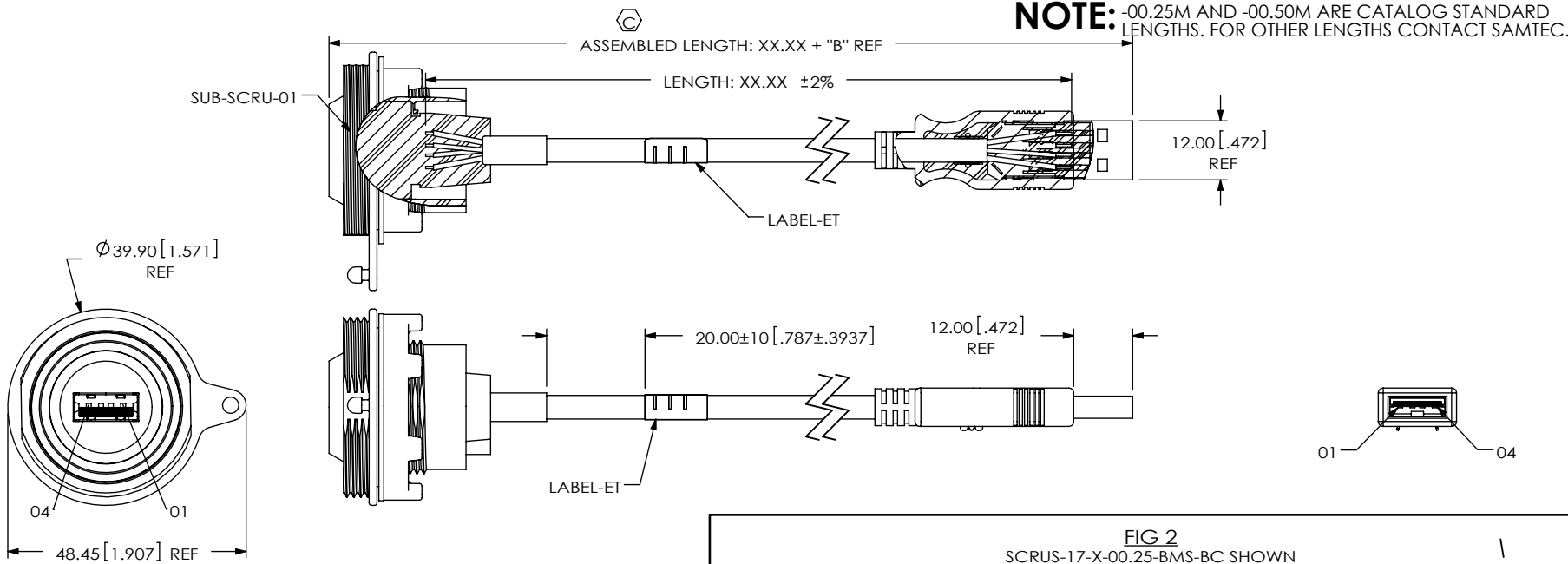
PLATING
-G: .000030" GOLD ON CONTACT AREAS, NICKEL ON SHELLS

LENGTH
-XX.XX LENGTH IN METERS (00.25[9.84] MIN - 50.00[1968.50] MAX) (SEE NOTE 15)

END OPTION 2
-AM: USB A TYPE PLUG, UNSEALED
-BM: USB B TYPE PLUG, UNSEALED
-BC: BLUNT CUT
-MB: MINI USB B TYPE PLUG, UNSEALED

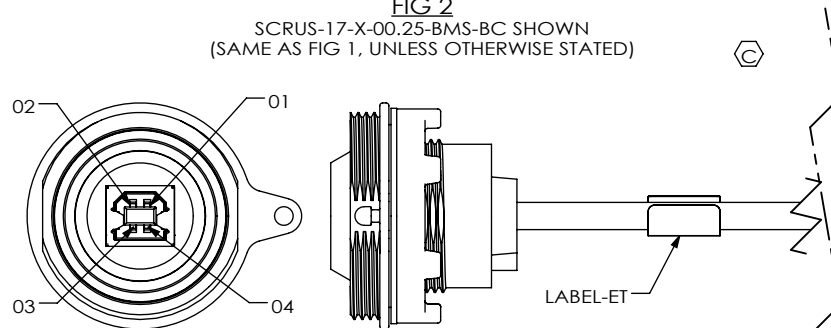
END OPTION 1
-AMS: USB A TYPE JACK, SEALED
-BMS: USB B TYPE JACK, SEALED

FIG 1
SCRUS-17-X-00.25-AMS-AM SHOWN



- NOTES:
- ⊗ REPRESENTS A CRITICAL DIMENSION.
 - ASSEMBLY TO BE 100% TESTED FOR OPENS AND SHORTS, HI-POT TEST AT 200V BEFORE PREMOLD IN-PROCESS AND ON FINISHED ASSEMBLY. AFTER FINAL ELECTRICAL TEST, LABEL EACH ASSEMBLY WITH 1 LABEL-ET.
 - NOTE DELETED.
 - USB LOGO TO BE RAISED 0.25[.010].
 - PANEL THICKNESS: 0.76[.030] - 5.2[.205].
 - THE SUB-SCRU-01 END OF CABLE ASSEMBLY TO BE COVERED WITH ANTISTATIC BUBBLE BAG ASSBLT 4 x 5.5.
 - TORQUE SPECIFICATION FOR NUT ON SUB-SCRU-01 IS 12 IN-LB.
 - NOTE DELETED.
 - ALL IDENTIFICATION MARKS MUST NOT STAND GREATER THAN 0.051[.002] OFF THE SURFACE OF THE PART.
 - MOLD TO BE INSERTED TO ACCEPT DIFFERENT CABLE DIAMETERS.
 - ALL EJECTOR PIN AND GATE LOCATIONS MUST BE APPROVED BY SAMTEC PRODUCT ENGINEERING.
 - ANY ADDITIONAL VOIDING AND/OR MODIFICATIONS TO VOIDING MUST BE APPROVED BY SAMTEC PRODUCT ENGINEERING.
 - THIS IS A COMPONENT OF USBP-A-01-G-B-01 (CALLED OUT ON THE BOM), BUT LABELED INDIVIDUALLY FOR ASSEMBLY PURPOSES.
 - THIS IS A COMPONENT OF USBP-B-01-G-B-01 (CALLED OUT ON THE BOM), BUT LABELED INDIVIDUALLY FOR ASSEMBLY PURPOSES.
 - LENGTHS GREATER THAN 01.00M ARE NOT SUPPORTED BY USB 2.0 TEST DATA.
 - NOTE DELETED.

FIG 2
SCRUS-17-X-00.25-BMS-BC SHOWN (SAME AS FIG 1, UNLESS OTHERWISE STATED)



UNLESS OTHERWISE SPECIFIED, DIMENSIONS ARE IN MILLIMETERS. TOLERANCES ARE:

| DECIMALS | ANGLES |
|---------------------|--------|
| X.X: ±0.35 [.013] | 2° |
| X.XX: ±0.25 [.010] | |
| X.XXX: ±0.15 [.006] | |

PROPRIETARY NOTE

THIS DOCUMENT CONTAINS CONFIDENTIAL AND PROPRIETARY INFORMATION AND ALL DESIGN, MANUFACTURING, REPRODUCTION, USE, PATENT RIGHTS AND SALES RIGHTS ARE EXPRESSLY RESERVED BY SAMTEC, INC. THIS DOCUMENT SHALL NOT BE DISCLOSED, IN WHOLE OR PART, TO ANY UNAUTHORIZED PERSON OR ENTITY NOR REPRODUCED, TRANSFERRED OR INCORPORATED IN ANY OTHER PROJECT IN ANY MANNER WITHOUT THE EXPRESS WRITTEN CONSENT OF SAMTEC, INC.



520 PARK EAST BLVD, NEW ALBANY, IN 47150
PHONE: 812-944-6733 FAX: 812-948-5047
e-Mail: info@SAMTEC.com code 55322

MATERIAL: DO NOT SCALE DRAWING SHEET SCALE: 3:4
INSULATOR: GLASS FILLED THERMOPLASTIC
CONTACTS: COPPER ALLOY
SHIELDS: CRS
CABLE NUT: PA66
SEALED PREMOLD: TPE(RF 640A), SHOT WEIGHT: 10.66g [.024lb]
SEALED OVERMOLD: PA66 GF13 FR(70G13L); MAX REGRIND: 10%, SHOT WEIGHT: 12.70g [.028lb]
NON-SEALED OVERMOLD: PVC; MAX REGRIND: 30%, SHOT WEIGHT: 9.07g [.020lb]

DESCRIPTION: PANEL MOUNT SEALED USB CABLE
DWG. NO.: SCRUS-17-X-XX.XX-XXX-XX
BY: LENNY K **09-01-2010** **SHEET 1 OF 15**

FIG 3
SCRUS-17-X-00.25-BMS-BM SHOWN
(SAME AS FIG 1, UNLESS OTHERWISE STATED)

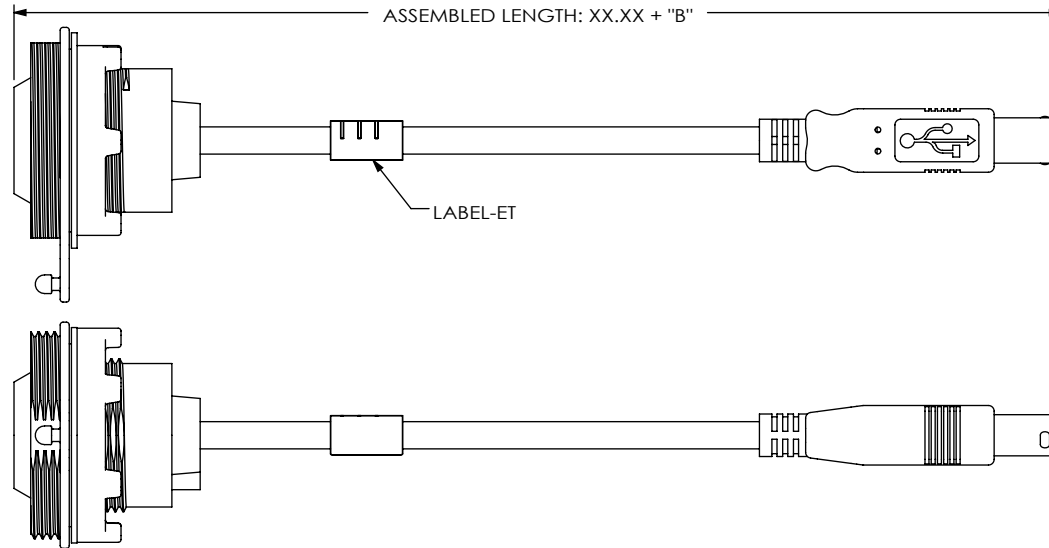
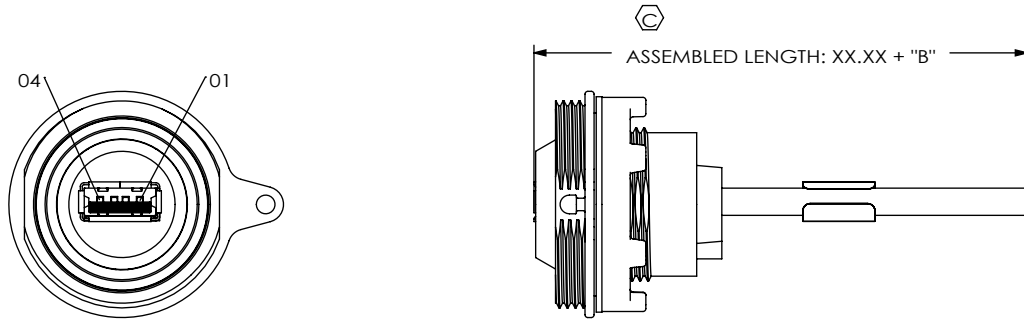


FIG 4
SCRUS-17-X-00.25-AMS-BC SHOWN
(SAME AS FIG 1, UNLESS OTHERWISE STATED)



| J1 End | | Wire Color | J2 End | | | |
|------------|------------|--------------------|------------|------------|------------|------------|
| -AMS | -BMS | | -AM | -BM | -BC | -MB |
| 01 | 01 | RED | 01 | 01 | 01 | 01 |
| 02 | 02 | WHITE | 02 | 02 | 02 | 02 |
| 03 | 03 | GREEN | 03 | 03 | 03 | 03 |
| n/a | n/a | NOT CONNECTED | n/a | n/a | n/a | 04 |
| 04 | 04 | BLACK | 04 | 04 | 04 | 05 |
| USB Shield | USB Shield | DRAIN/CABLE SHIELD | USB Shield | USB Shield | USB Shield | USB Shield |

PROPRIETARY NOTE
THIS DOCUMENT CONTAINS CONFIDENTIAL AND PROPRIETARY INFORMATION AND ALL DESIGN, MANUFACTURING, REPRODUCTION, USE, PATENT RIGHTS AND SALES RIGHTS ARE EXPRESSLY RESERVED BY SAMTEC, INC. THIS DOCUMENT SHALL NOT BE DISCLOSED, IN WHOLE OR PART, TO ANY UNAUTHORIZED PERSON OR ENTITY NOR REPRODUCED, TRANSFERRED OR INCORPORATED IN ANY OTHER PROJECT IN ANY MANNER WITHOUT THE EXPRESS WRITTEN CONSENT OF SAMTEC, INC.

DO NOT SCALE DRAWING

SHEET SCALE: 1:2

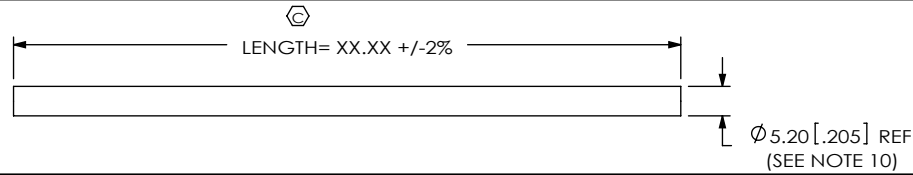


520 PARK EAST BLVD, NEW ALBANY, IN 47150
PHONE: 812-944-6733 FAX: 812-948-5047
e-Mail info@SAMTEC.com code 55322

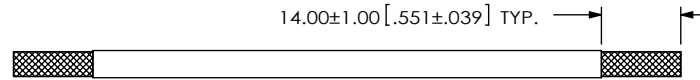
DESCRIPTION:
PANEL MOUNT SEALED USB CABLE

DWG. NO.
SCRUS-17-X-XX.XX-XXX-XX

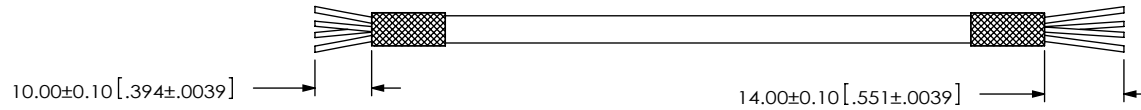
BY: LENNY K 09-01-2010 SHEET 2 OF 15



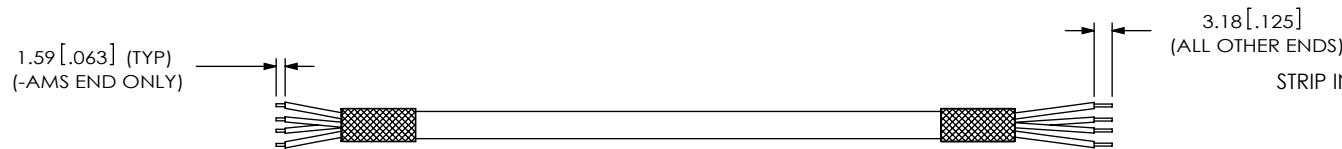
-AMS-AM: END OPTION
IN-PROCESS 1
UCA-03-01
CUT CABLES TO LENGTH



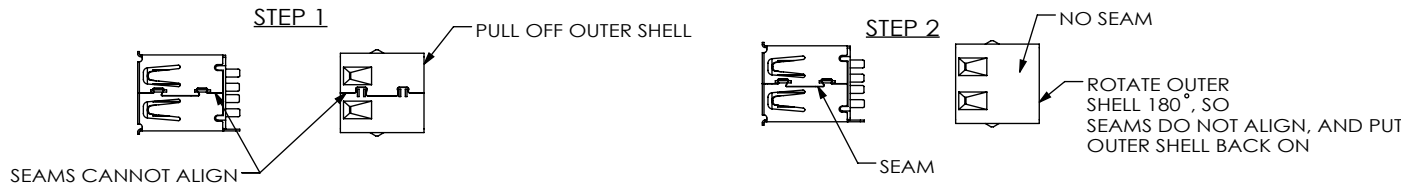
-AMS-AM: END OPTION
IN-PROCESS 2
UCA-03-01
STRIP OUTER JACKET TO DIMENSION SHOWN



-AMS-AM: END OPTION
IN-PROCESS 3
FOLD BACK SHIELD & TRIM WIRES TO LENGTH

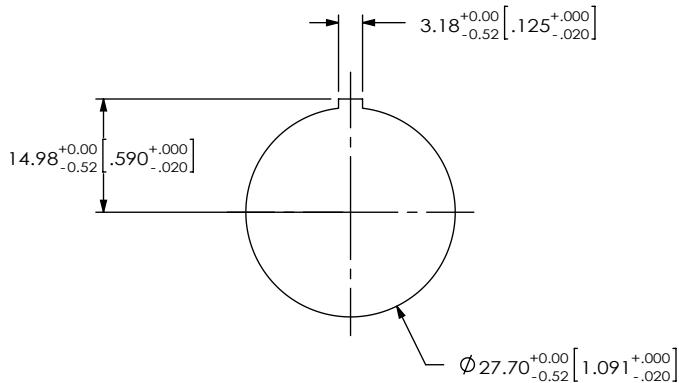


-AMS-AM: END OPTION
IN-PROCESS 4
STRIP INDIVIDUAL CABLES TO DIMENSION SHOWN

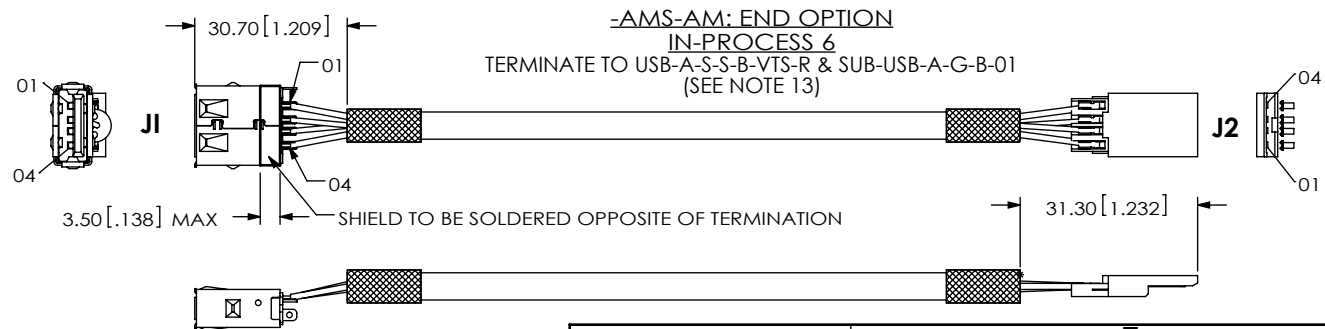


-AMS-AM: END OPTION
IN-PROCESS 5

RECOMMENDED PANEL HOLE
(SEE NOTE 5)



F:\DWG\MISC\MKTG\SCRUS-17-X-XX-XX-XXX-XX-MKT.SLDDRW



-AMS-AM: END OPTION
IN-PROCESS 6
TERMINATE TO USB-A-S-S-B-VTS-R & SUB-USB-A-G-B-01
(SEE NOTE 13)

PROPRIETARY NOTE
THIS DOCUMENT CONTAINS CONFIDENTIAL AND PROPRIETARY INFORMATION AND ALL DESIGN, MANUFACTURING, REPRODUCTION, USE, PATENT RIGHTS AND SALES RIGHTS ARE EXPRESSLY RESERVED BY SAMTEC, INC. THIS DOCUMENT SHALL NOT BE DISCLOSED, IN WHOLE OR PART, TO ANY UNAUTHORIZED PERSON OR ENTITY NOR REPRODUCED, TRANSFERRED OR INCORPORATED IN ANY OTHER PROJECT IN ANY MANNER WITHOUT THE EXPRESS WRITTEN CONSENT OF SAMTEC, INC.

DO NOT SCALE DRAWING

SHEET SCALE: 0.75:1



520 PARK EAST BLVD, NEW ALBANY, IN 47150
PHONE: 812-944-6733 FAX: 812-948-5047
e-Mail: info@SAMTEC.com code 55322

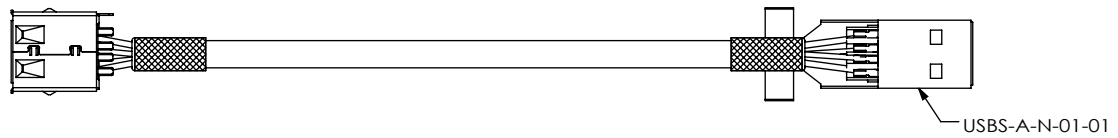
DESCRIPTION:
PANEL MOUNT SEALED USB CABLE

DWG. NO.
SCRUS-17-X-XX-XX-XXX-XX

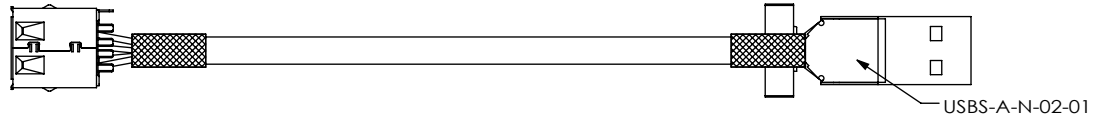
BY: LENNY K 09-01-2010 SHEET 3 OF 15

REVISION AB

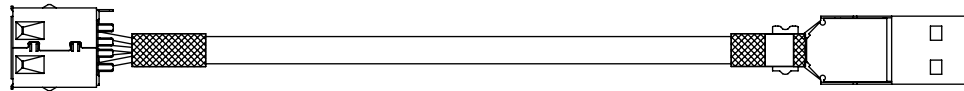
-AMS-AM: END OPTION
IN-PROCESS 7
ADD USBS-A-N-01-01 (SEE NOTE 13)



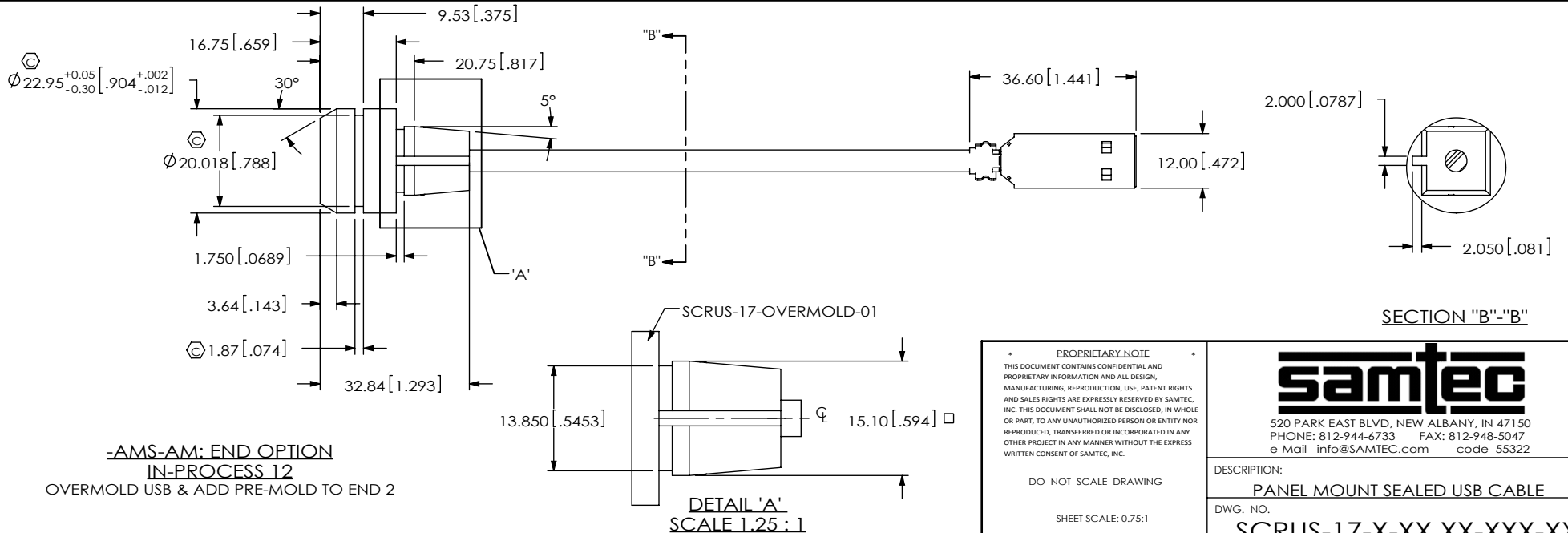
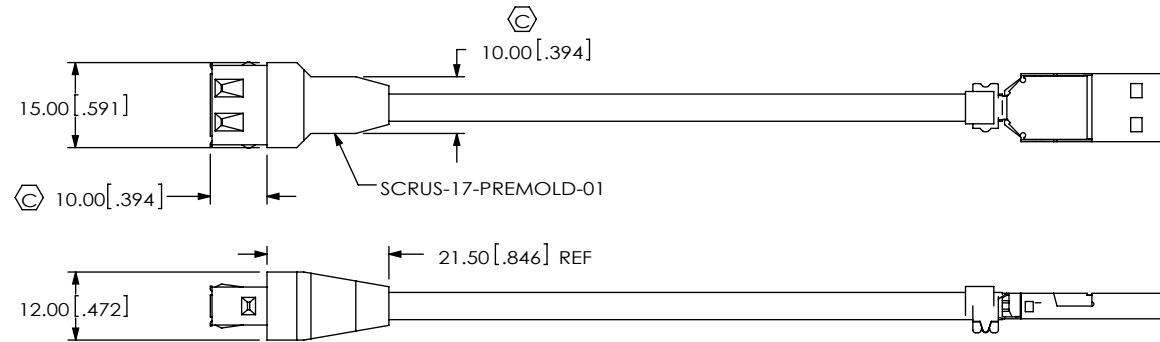
-AMS-AM: END OPTION
IN-PROCESS 8
ADD USBS-A-N-02-01 (SEE NOTE 13)



-AMS-AM: END OPTION
IN-PROCESS 9 & 10
CRIMP SHELLS OVERBAND
TRIM SHIELD TAB ON USB-A-S-S-B-VTS-R



-AMS-AM: END OPTION
IN-PROCESS 11
PREMOLD



-AMS-AM: END OPTION
IN-PROCESS 12
OVERMOLD USB & ADD PRE-MOLD TO END 2

DETAIL 'A'
SCALE 1.25 : 1

PROPRIETARY NOTE
THIS DOCUMENT CONTAINS CONFIDENTIAL AND PROPRIETARY INFORMATION AND ALL DESIGN, MANUFACTURING, REPRODUCTION, USE, PATENT RIGHTS AND SALES RIGHTS ARE EXPRESSLY RESERVED BY SAMTEC, INC. THIS DOCUMENT SHALL NOT BE DISCLOSED, IN WHOLE OR PART, TO ANY UNAUTHORIZED PERSON OR ENTITY NOR REPRODUCED, TRANSFERRED OR INCORPORATED IN ANY OTHER PROJECT IN ANY MANNER WITHOUT THE EXPRESS WRITTEN CONSENT OF SAMTEC, INC.

DO NOT SCALE DRAWING

SHEET SCALE: 0.75:1

samtec

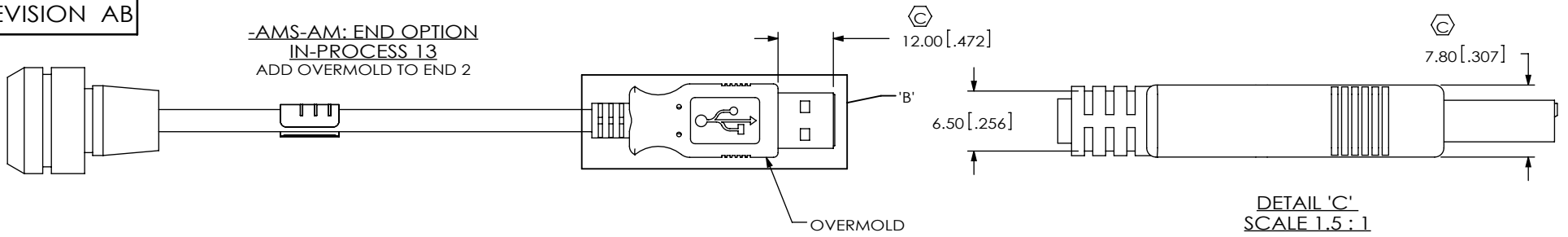
520 PARK EAST BLVD, NEW ALBANY, IN 47150
PHONE: 812-944-6733 FAX: 812-948-5047
e-Mail: info@SAMTEC.com code 55322

DESCRIPTION:
PANEL MOUNT SEALED USB CABLE

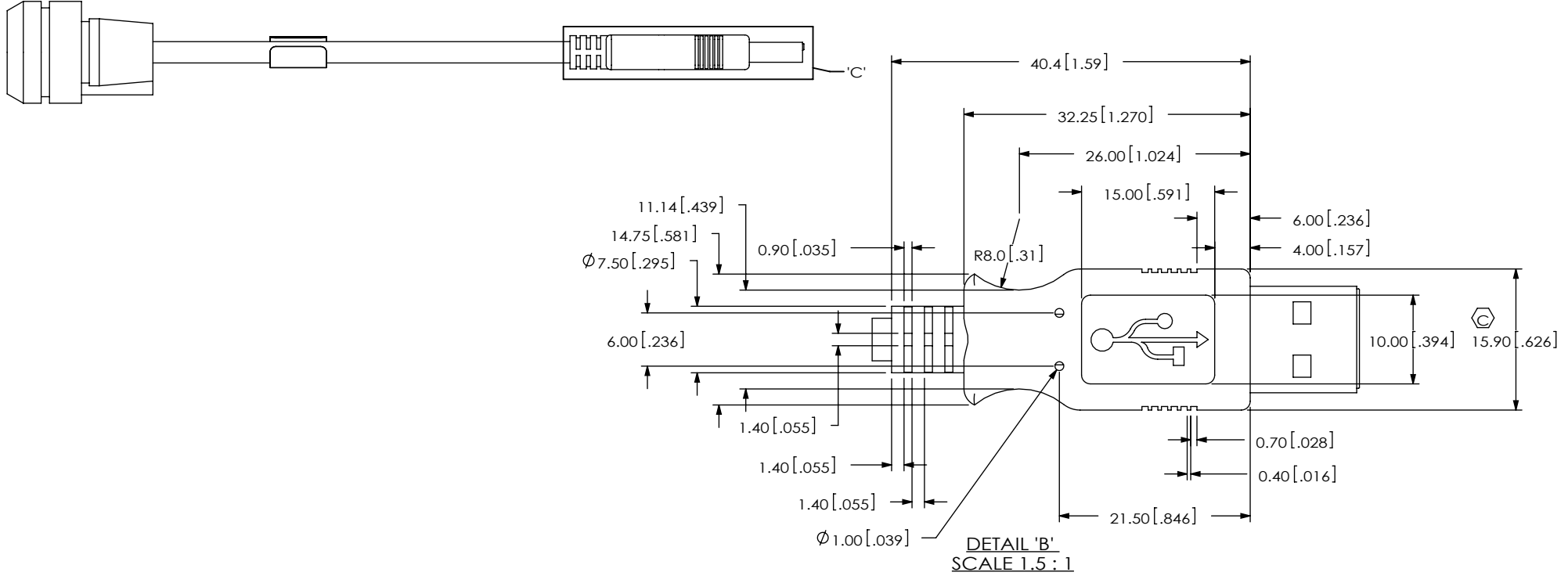
DWG. NO.
SCRUS-17-X-XX.XX-XXX-XX

BY: LENNY K 09-01-2010 SHEET 4 OF 15

-AMS-AM: END OPTION
IN-PROCESS 13
ADD OVERMOLD TO END 2

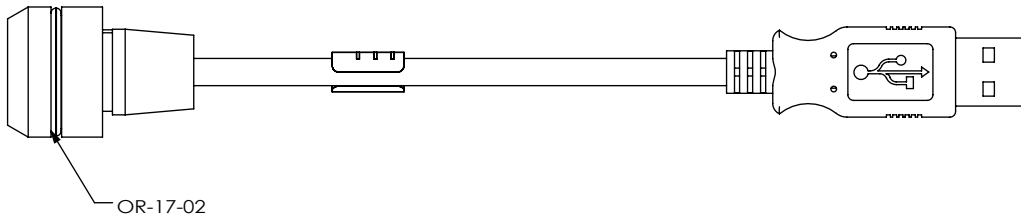


DETAIL 'C'
SCALE 1.5 : 1



DETAIL 'B'
SCALE 1.5 : 1

-AMS-AM: END OPTION
N-PROCESS 14
ADD OR-17-02



PROPRIETARY NOTE
THIS DOCUMENT CONTAINS CONFIDENTIAL AND PROPRIETARY INFORMATION AND ALL DESIGN, MANUFACTURING, REPRODUCTION, USE, PATENT RIGHTS AND SALES RIGHTS ARE EXPRESSLY RESERVED BY SAMTEC, INC. THIS DOCUMENT SHALL NOT BE DISCLOSED, IN WHOLE OR PART, TO ANY UNAUTHORIZED PERSON OR ENTITY NOR REPRODUCED, TRANSFERRED OR INCORPORATED IN ANY OTHER PROJECT IN ANY MANNER WITHOUT THE EXPRESS WRITTEN CONSENT OF SAMTEC, INC.

DO NOT SCALE DRAWING

SHEET SCALE: 0.75:1



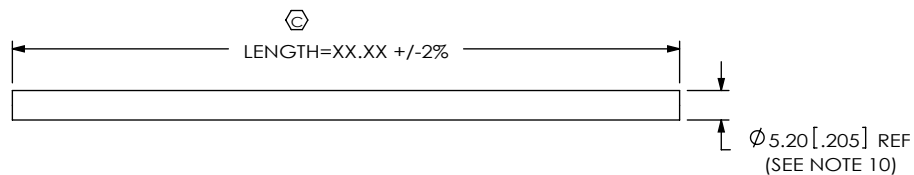
520 PARK EAST BLVD, NEW ALBANY, IN 47150
PHONE: 812-944-6733 FAX: 812-948-5047
e-Mail: info@SAMTEC.com code 55322

DESCRIPTION:
PANEL MOUNT SEALED USB CABLE

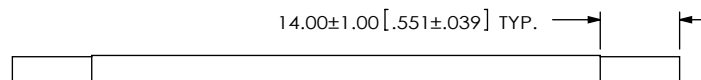
DWG. NO.
SCRUS-17-X-XX.XX-XXX-XX

BY: LENNY K 09-01-2010 SHEET 5 OF 15

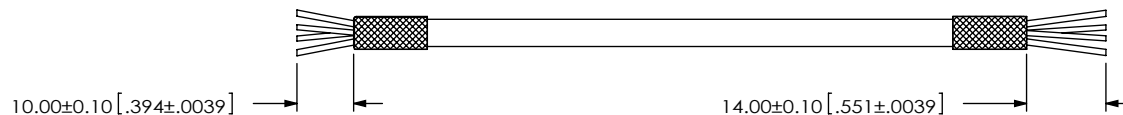
-BMS-BM: END OPTION
IN-PROCESS 1
UCA-03-01
CUT CABLES TO LENGTH



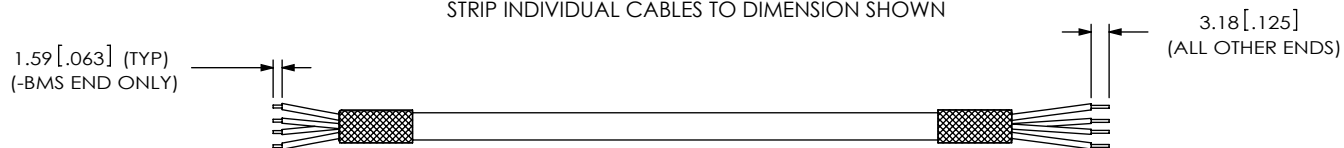
-BMS-BM: END OPTION
IN-PROCESS 2
UCA-03-01
STRIP OUTER JACKET TO DIMENSION SHOWN



-BMS-BM: END OPTION
IN-PROCESS 3
FOLD BACK SHIELD & TRIM WIRES TO LENGTH



-BMS-BM: END OPTION
IN-PROCESS 4
STRIP INDIVIDUAL CABLES TO DIMENSION SHOWN



* PROPRIETARY NOTE *

THIS DOCUMENT CONTAINS CONFIDENTIAL AND PROPRIETARY INFORMATION AND ALL DESIGN, MANUFACTURING, REPRODUCTION, USE, PATENT RIGHTS AND SALES RIGHTS ARE EXPRESSLY RESERVED BY SAMTEC, INC. THIS DOCUMENT SHALL NOT BE DISCLOSED, IN WHOLE OR PART, TO ANY UNAUTHORIZED PERSON OR ENTITY NOR REPRODUCED, TRANSFERRED OR INCORPORATED IN ANY OTHER PROJECT IN ANY MANNER WITHOUT THE EXPRESS WRITTEN CONSENT OF SAMTEC, INC.

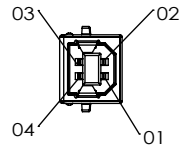
DO NOT SCALE DRAWING

SHEET SCALE: 0.75:1



520 PARK EAST BLVD, NEW ALBANY, IN 47150
PHONE: 812-944-6733 FAX: 812-948-5047
e-Mail info@SAMTEC.com code 55322

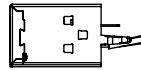
| | |
|--------------|------------------------------|
| DESCRIPTION: | PANEL MOUNT SEALED USB CABLE |
| DWG. NO. | SCRUS-17-X-XX.XX-XXX-XX |
| BY: LENNY K | 09-01-2010 SHEET 6 OF 15 |



USB-B-S-S-B-VT-R

3.50 [.138] MAX

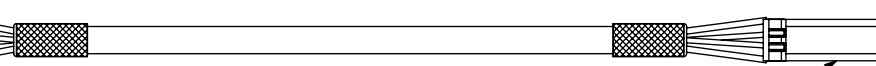
J1



SHIELD TO BE SOLDERED ON OPPOSITE SIDE IN THIS AREA.

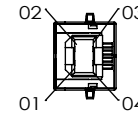
-BMS-BM END OPTION
IN-PROCESS 5

TERMINATE TO USB-B-S-S-B-VT-R & SUB-USB-B-G-B-01 (SEE NOTE 14)
(SEE TABLE 3 FOR PINOUT)



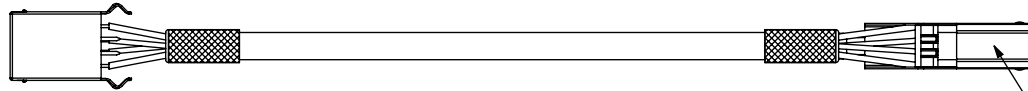
SUB-USB-B-G-B-01
(SEE NOTE 14)

J2



-BMS-BM END OPTION
IN-PROCESS 6

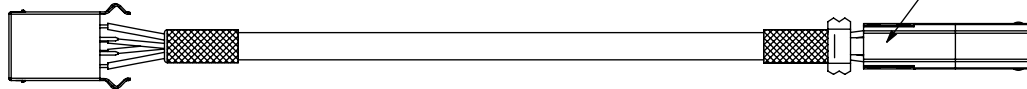
ADD USBS-B-N-01-01 SHELL (SEE NOTE 14)



USBS-B-N-01-01

-BMS-BM END OPTION
IN-PROCESS 7

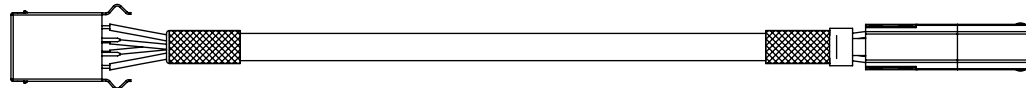
ADD USBS-B-N-02-01 SHELL (SEE NOTE 14)



USBS-B-N-02-01

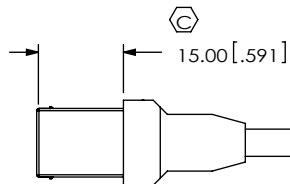
-BMS-BM END OPTION
IN-PROCESS 8 & 9

CRIMP SHELL OVER BRAID
TRIM TAB ON USB-B-S-S-B-VT-R



-BMS-BM END OPTION
IN-PROCESS 10

PREMOLD
(SAME AS -AMS-AM, UNLESS OTHERWISE STATED)



15.00 [.591]



PROPRIETARY NOTE
THIS DOCUMENT CONTAINS CONFIDENTIAL AND PROPRIETARY INFORMATION AND ALL DESIGN, MANUFACTURING, REPRODUCTION, USE, PATENT RIGHTS AND SALES RIGHTS ARE EXPRESSLY RESERVED BY SAMTEC, INC. THIS DOCUMENT SHALL NOT BE DISCLOSED, IN WHOLE OR PART, TO ANY UNAUTHORIZED PERSON OR ENTITY NOR REPRODUCED, TRANSFERRED OR INCORPORATED IN ANY OTHER PROJECT IN ANY MANNER WITHOUT THE EXPRESS WRITTEN CONSENT OF SAMTEC, INC.

DO NOT SCALE DRAWING

SHEET SCALE: 1:2



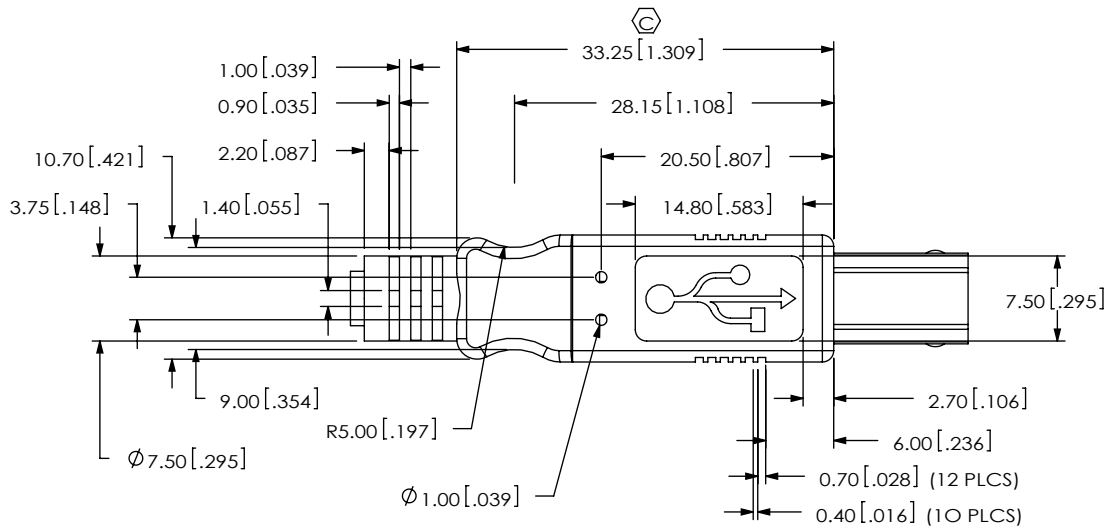
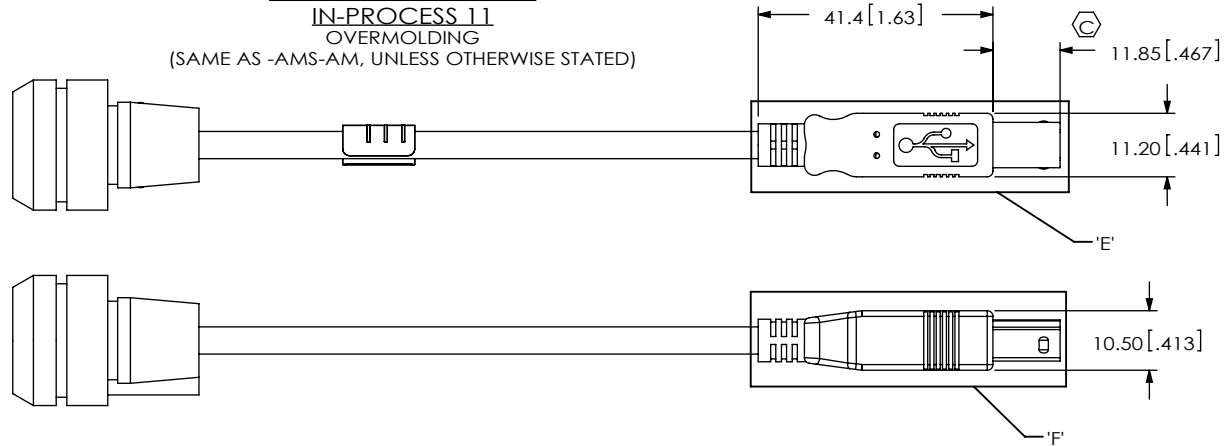
520 PARK EAST BLVD, NEW ALBANY, IN 47150
PHONE: 812-944-6733 FAX: 812-948-5047
e-Mail: info@SAMTEC.com code 55322

DESCRIPTION: PANEL MOUNT SEALED USB CABLE

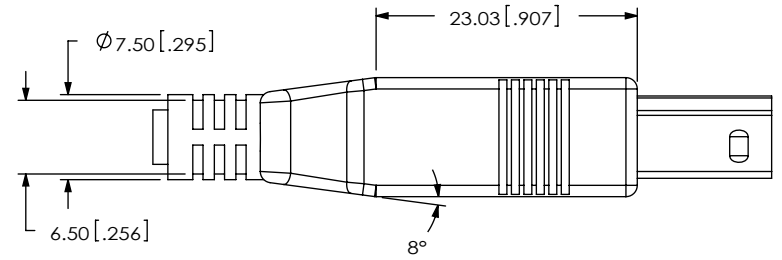
DWG. NO. **SCRUS-17-X-XX.XX-XXX-XX**

BY: LENNY K 09-01-2010 SHEET 7 OF 15

-BMS-BM END OPTION
IN-PROCESS 11
 OVERMOLDING
 (SAME AS -AMS-AM, UNLESS OTHERWISE STATED)

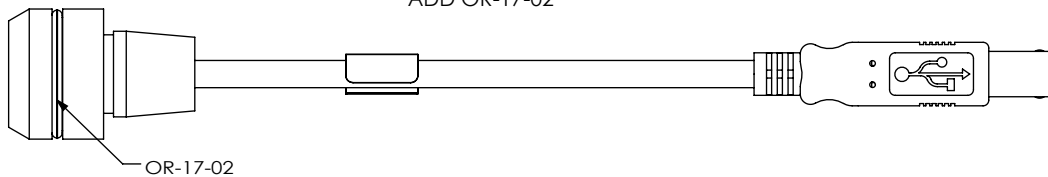


DETAIL 'E'
 SCALE 1.5 : 1



DETAIL 'F'
 SCALE 1.5 : 1

-BMS-BM END OPTION
IN-PROCESS 12
 ADD OR-17-02



OR-17-02

PROPRIETARY NOTE
 THIS DOCUMENT CONTAINS CONFIDENTIAL AND PROPRIETARY INFORMATION AND ALL DESIGN, MANUFACTURING, REPRODUCTION, USE, PATENT RIGHTS AND SALES RIGHTS ARE EXPRESSLY RESERVED BY SAMTEC, INC. THIS DOCUMENT SHALL NOT BE DISCLOSED, IN WHOLE OR PART, TO ANY UNAUTHORIZED PERSON OR ENTITY NOR REPRODUCED, TRANSFERRED OR INCORPORATED IN ANY OTHER PROJECT IN ANY MANNER WITHOUT THE EXPRESS WRITTEN CONSENT OF SAMTEC, INC.

DO NOT SCALE DRAWING

SHEET SCALE: 1:2



520 PARK EAST BLVD, NEW ALBANY, IN 47150
 PHONE: 812-944-6733 FAX: 812-948-5047
 e-Mail: info@SAMTEC.com code 55322

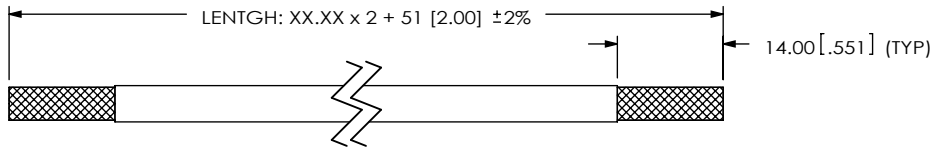
DESCRIPTION: **PANEL MOUNT SEALED USB CABLE**

DWG. NO. **SCRUS-17-X-XX-XX-XXX-XX**

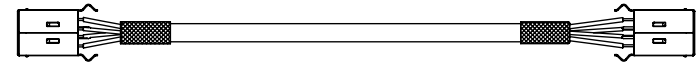
BY: **LENNY K** 09-01-2010 SHEET 8 OF 15

REVISION AB

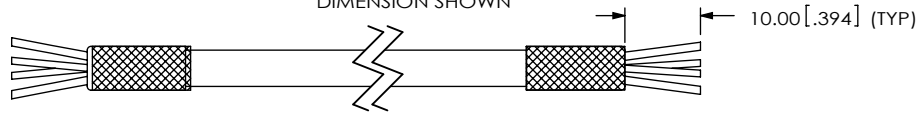
**-BMS-BC: END OPTION
IN-PROCESS 1**
CUT CABLES TO LENGTH & STRIP OUTER
JACKET TO DIMENSION SHOWN



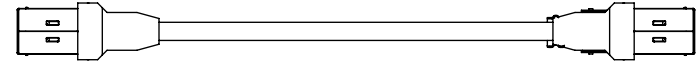
**-BMS-BC: END OPTION
IN-PROCESS 5**
CLIP TABS ON USB-B-S-X-X-VT-X



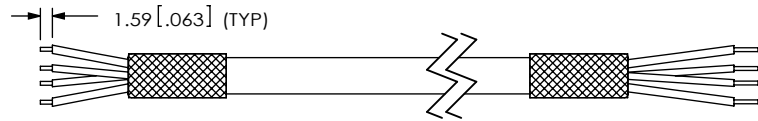
**-BMS-BC: END OPTION
IN-PROCESS 2**
FOLD BACK SHIELD & TRIM WIRES TO
DIMENSION SHOWN



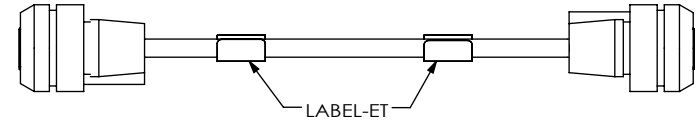
**-BMS-BC: END OPTION
IN-PROCESS 6**
ADD PREMOLD



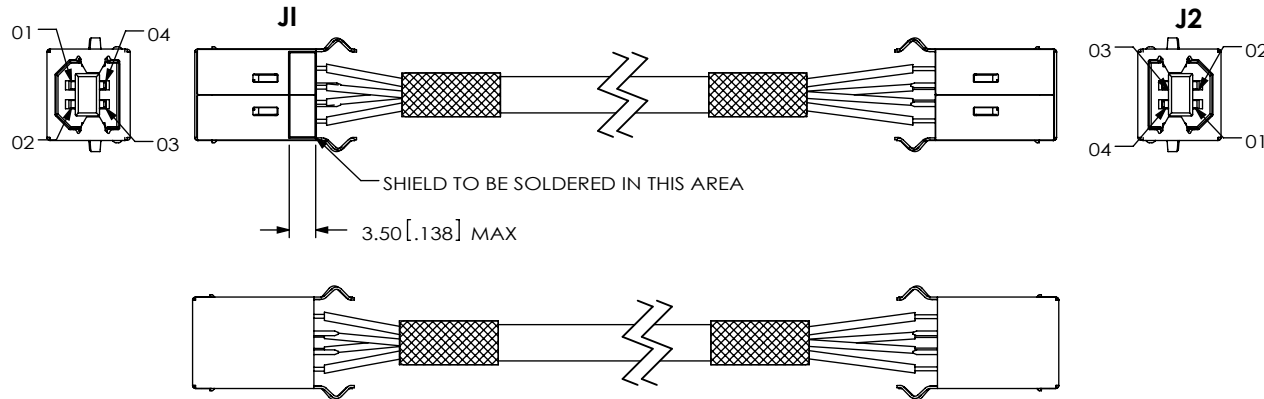
**-BMS-BC: END OPTION
IN-PROCESS 3**
STRIP INDIVIDUAL WIRES TO DIMENSION SHOWN



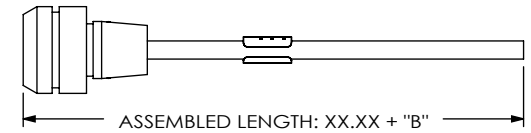
**-BMS-BC: END OPTION
IN-PROCESS 7**
ADD OVERMOLD



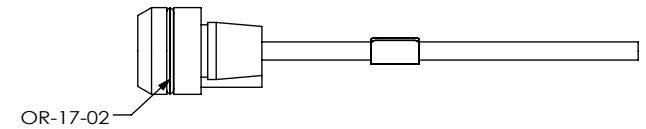
**-BMS-BC: END OPTION
IN-PROCESS 4**
TERMINATE TO USB-B-X-X-VTS-X
(SEE NOTE 14) (SEE TABLE 2 FOR PIN OUT)



**BMS-BC: END OPTION
IN-PROCESS 8**
CUT IN HALF AND TRIM TO LENGTH



**BMS-BC: END OPTION
IN-PROCESS 9**
ADD O-RING



PROPRIETARY NOTE
THIS DOCUMENT CONTAINS CONFIDENTIAL AND
PROPRIETARY INFORMATION AND ALL DESIGN,
MANUFACTURING, REPRODUCTION, USE, PATENT RIGHTS
AND SALES RIGHTS ARE EXPRESSLY RESERVED BY SAMTEC,
INC. THIS DOCUMENT SHALL NOT BE DISCLOSED, IN WHOLE
OR PART, TO ANY UNAUTHORIZED PERSON OR ENTITY NOR
REPRODUCED, TRANSFERRED OR INCORPORATED IN ANY
OTHER PROJECT IN ANY MANNER WITHOUT THE EXPRESS
WRITTEN CONSENT OF SAMTEC, INC.

DO NOT SCALE DRAWING

SHEET SCALE: 1:1

samtec

520 PARK EAST BLVD, NEW ALBANY, IN 47150
PHONE: 812-944-6733 FAX: 812-948-5047
e-Mail info@SAMTEC.com code 55322

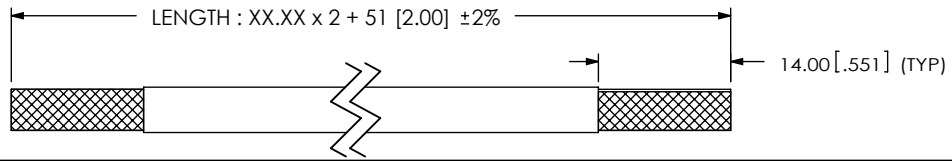
DESCRIPTION:
PANEL MOUNT SEALED USB CABLE

DWG. NO.
SCRUS-17-X-XX.XX-XXX-XX

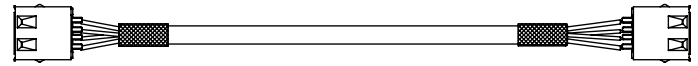
BY: LENNY K 09-01-2010 SHEET 9 OF 15

REVISION AB

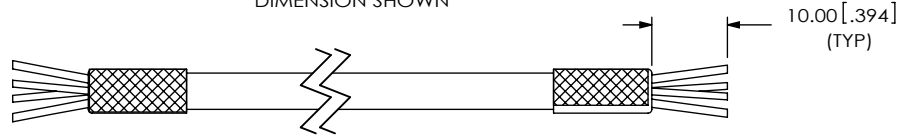
-AMS-BC: END OPTION
IN-PROCESS 1
CUT CABLES TO LENGTH & STRIP OUTER
JACKET TO DIMENSION SHOWN



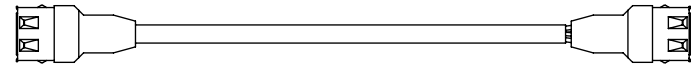
AMS-BC: END OPTION
IN-PROCESS 6
CLIP TABS ON USB-A-S-S-B-VTS-R



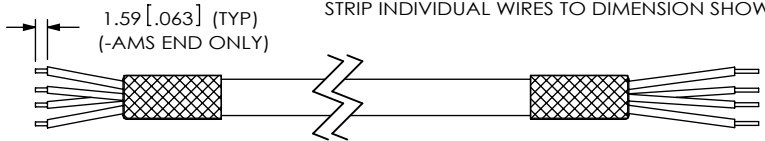
-AMS-BC: END OPTION
IN-PROCESS 2
FOLD BACK SHIELD & TRIM WIRES TO
DIMENSION SHOWN



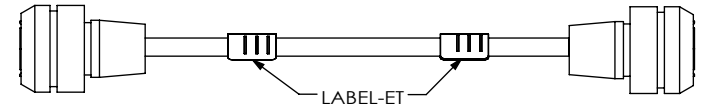
AMS-BC: END OPTION
IN-PROCESS 7
ADD PREMOLD



-AMS-BC: END OPTION
IN-PROCESS 3
STRIP INDIVIDUAL WIRES TO DIMENSION SHOWN



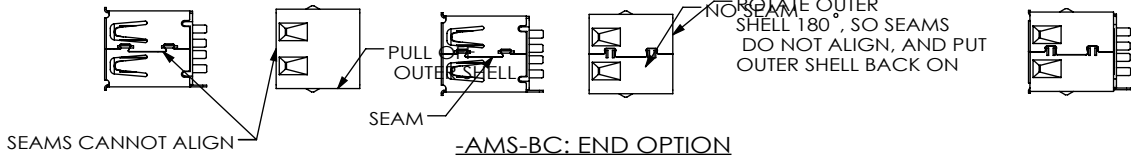
AMS-BC: END OPTION
IN-PROCESS 8
ADD OVERMOLD



STEP 1

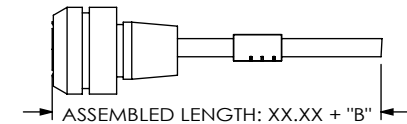
STEP 2

STEP 3

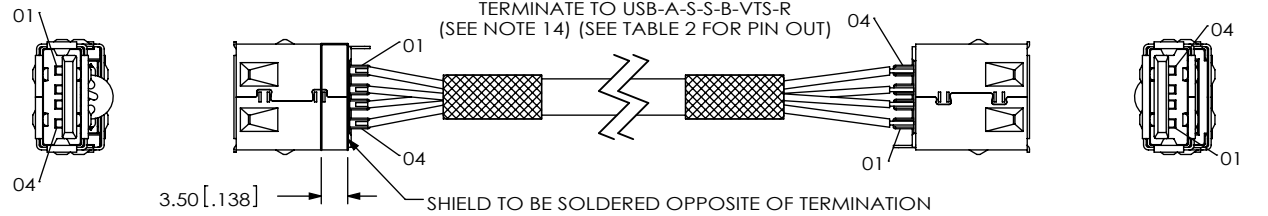


-AMS-BC: END OPTION
IN-PROCESS 4
MODIFY USB-A-S-S-B-VTS-R

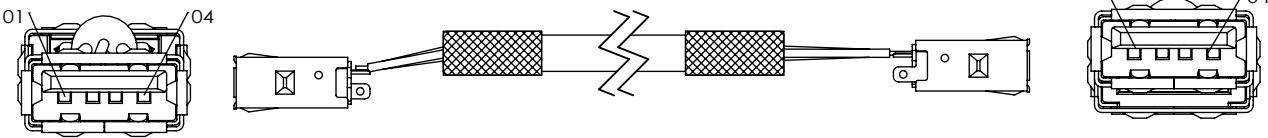
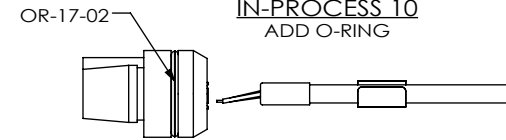
AMS-BC: END OPTION
IN-PROCESS 9
CUT IN HALF AND TRIM TO LENGTH



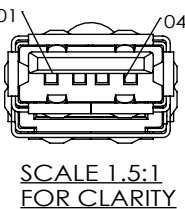
-AMS-BC: END OPTION
IN-PROCESS 5
TERMINATE TO USB-A-S-S-B-VTS-R
(SEE NOTE 14) (SEE TABLE 2 FOR PIN OUT)



AMS-BC: END OPTION
IN-PROCESS 10
ADD O-RING



SCALE 1.5:1
FOR CLARITY



SCALE 1.5:1
FOR CLARITY

PROPRIETARY NOTE
THIS DOCUMENT CONTAINS CONFIDENTIAL AND PROPRIETARY INFORMATION AND ALL DESIGN, MANUFACTURING, REPRODUCTION, USE, PATENT RIGHTS AND SALES RIGHTS ARE EXPRESSLY RESERVED BY SAMTEC, INC. THIS DOCUMENT SHALL NOT BE DISCLOSED, IN WHOLE OR PART, TO ANY UNAUTHORIZED PERSON OR ENTITY NOR REPRODUCED, TRANSFERRED OR INCORPORATED IN ANY OTHER PROJECT IN ANY MANNER WITHOUT THE EXPRESS WRITTEN CONSENT OF SAMTEC, INC.

DO NOT SCALE DRAWING

SHEET SCALE: 1:1.33333

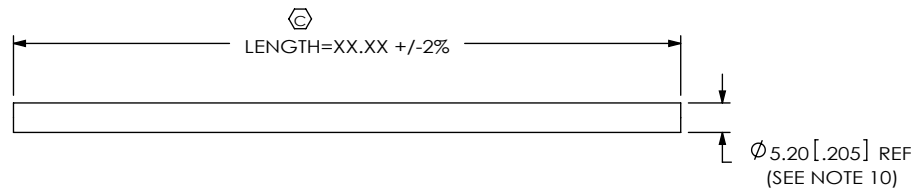


520 PARK EAST BLVD, NEW ALBANY, IN 47150
PHONE: 812-944-6733 FAX: 812-948-5047
e-Mail: info@SAMTEC.com code 55322

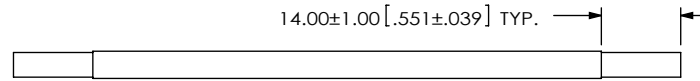
DESCRIPTION: PANEL MOUNT SEALED USB CABLE

DWG. NO. SCRUS-17-X-XX.XX-XXX-XX

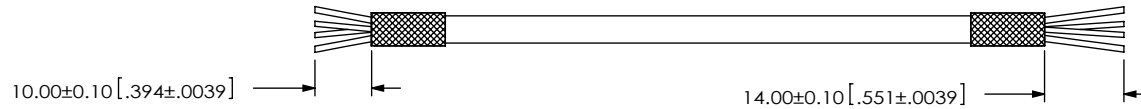
BY: LENNY K 09-01-2010 SHEET 10 OF 15



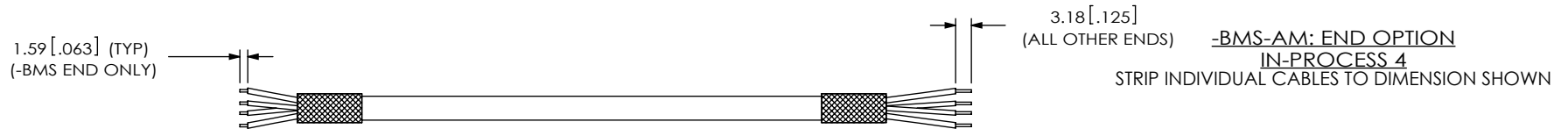
-BMS-AM: END OPTION
IN-PROCESS 1
UCA-03-01
CUT CABLES TO LENGTH



-BMS-AM: END OPTION
IN-PROCESS 2
UCA-03-01
STRIP OUTER JACKET TO DIMENSION SHOWN

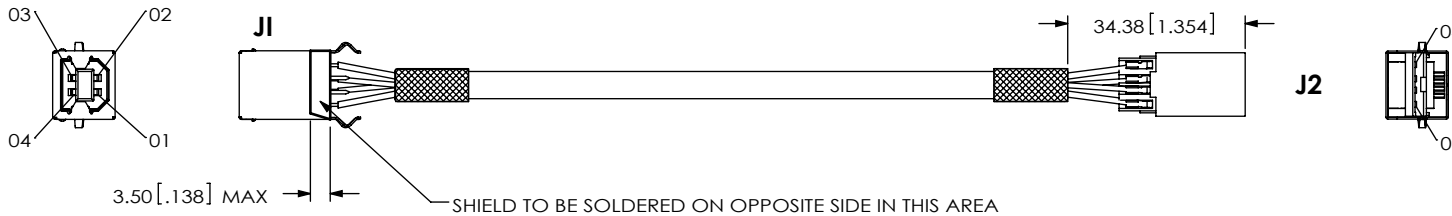


-BMS-AM: END OPTION
IN-PROCESS 3
FOLD BACK SHIELD & TRIM WIRES TO LENGTH

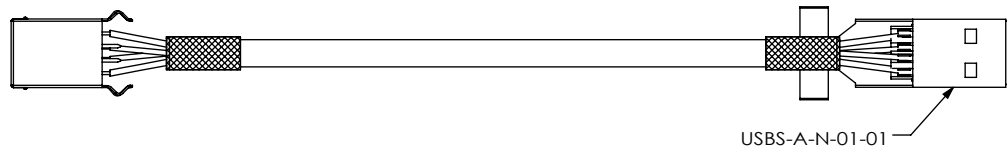


-BMS-AM: END OPTION
IN-PROCESS 4
STRIP INDIVIDUAL CABLES TO DIMENSION SHOWN

-BMS-AM: END OPTION
IN-PROCESS 5
TERMINATE TO USB-B-S-S-B-VT-R & SUB-USB-A-G-B-01



-BMS-AM: END OPTION
IN-PROCESS 6
ADD USBS-A-N-01-01 (SEE NOTE 13)



PROPRIETARY NOTE
THIS DOCUMENT CONTAINS CONFIDENTIAL AND PROPRIETARY INFORMATION AND ALL DESIGN, MANUFACTURING, REPRODUCTION, USE, PATENT RIGHTS AND SALES RIGHTS ARE EXPRESSLY RESERVED BY SAMTEC, INC. THIS DOCUMENT SHALL NOT BE DISCLOSED, IN WHOLE OR PART, TO ANY UNAUTHORIZED PERSON OR ENTITY NOR REPRODUCED, TRANSFERRED OR INCORPORATED IN ANY OTHER PROJECT IN ANY MANNER WITHOUT THE EXPRESS WRITTEN CONSENT OF SAMTEC, INC.

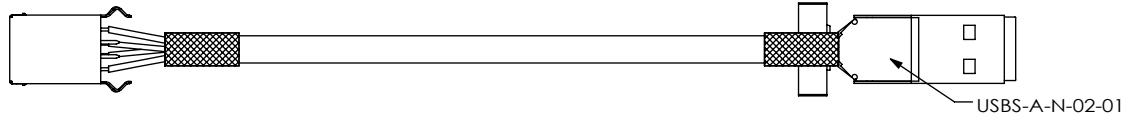
DO NOT SCALE DRAWING
SHEET SCALE: 0.75:1



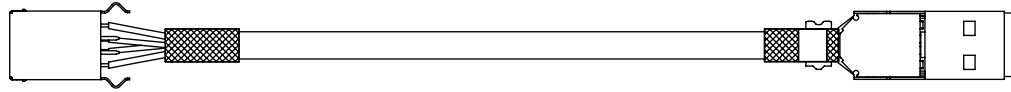
520 PARK EAST BLVD, NEW ALBANY, IN 47150
PHONE: 812-944-6733 FAX: 812-948-5047
e-Mail: info@SAMTEC.com code 55322

DESCRIPTION:
PANEL MOUNT SEALED USB CABLE
DWG. NO.
SCRUS-17-X-XX.XX-XXX-XX
BY: LENNY K 09-01-2010 SHEET 11 OF 15

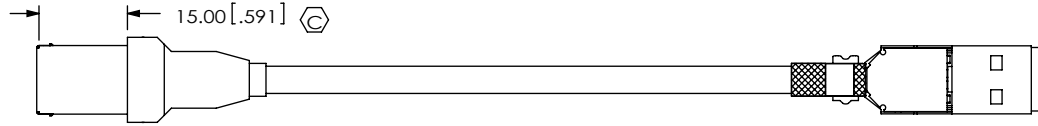
-BMS-AM: END OPTION
IN-PROCESS 7
 ADD USBS-A-N-02-01 (SEE NOTE 13)



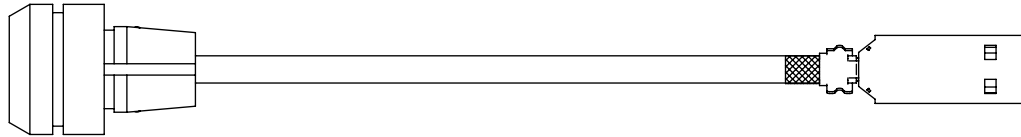
-BMS-AM: END OPTION
IN-PROCESS 8 & 9
 CRIMP SHELLS OVERBAND
 TRIM SHIELD TAB ON USB-B-S-S-B-VT-R



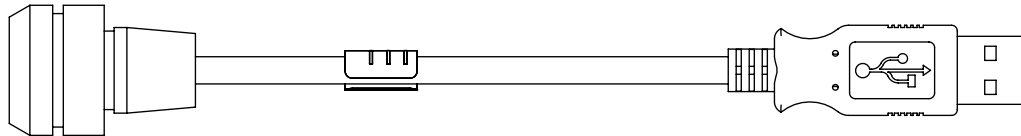
-BMS-AM: END OPTION
IN-PROCESS 10
 PREMOLD
 (SAME AS -AMS-AM, UNLESS OTHERWISE NOTED)



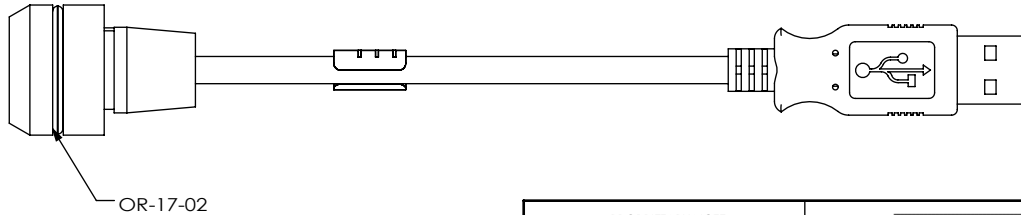
-BMS-AM: END OPTION
IN-PROCESS 11
 OVERMOLD USB
 (SAME AS -AMS-AM, UNLESS OTHERWISE NOTED)



-BMS-AM: END OPTION
IN-PROCESS 12
 ADD OVERMOLD TO END 2
 (SAME AS -AMS-AM, UNLESS OTHERWISE NOTED)



-BMS-AM: END OPTION
N-PROCESS 13
 ADD OR-17-02



PROPRIETARY NOTE
 * THIS DOCUMENT CONTAINS CONFIDENTIAL AND PROPRIETARY INFORMATION AND ALL DESIGN, MANUFACTURING, REPRODUCTION, USE, PATENT RIGHTS AND SALES RIGHTS ARE EXPRESSLY RESERVED BY SAMTEC, INC. THIS DOCUMENT SHALL NOT BE DISCLOSED, IN WHOLE OR PART, TO ANY UNAUTHORIZED PERSON OR ENTITY NOR REPRODUCED, TRANSFERRED OR INCORPORATED IN ANY OTHER PROJECT IN ANY MANNER WITHOUT THE EXPRESS WRITTEN CONSENT OF SAMTEC, INC.

DO NOT SCALE DRAWING
 SHEET SCALE: 0.75:1

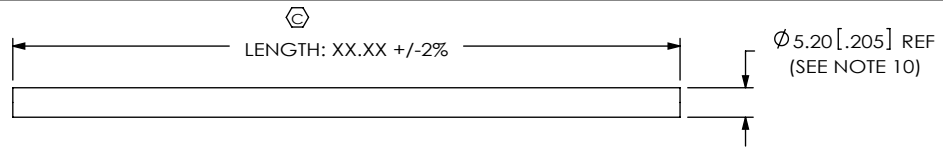


520 PARK EAST BLVD, NEW ALBANY, IN 47150
 PHONE: 812-944-6733 FAX: 812-948-5047
 e-Mail: info@SAMTEC.com code 55322

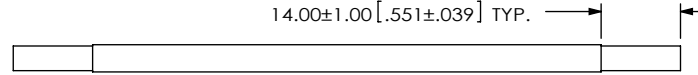
DESCRIPTION:
 PANEL MOUNT SEALED USB CABLE
 DWG. NO.
SCRUS-17-X-XX.XX-XXX-XX
 BY: LENNY K 09-01-2010 SHEET 12 OF 15

REVISION AB

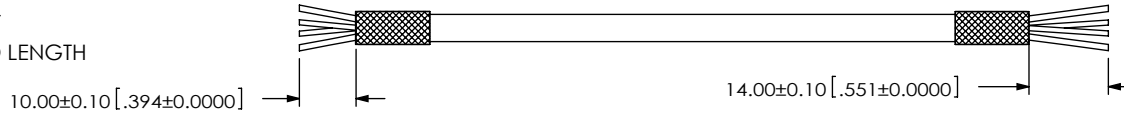
-AMS-BM: END OPTION
IN-PROCESS 1
UCA-03-01
CUT CABLES TO LENGTH



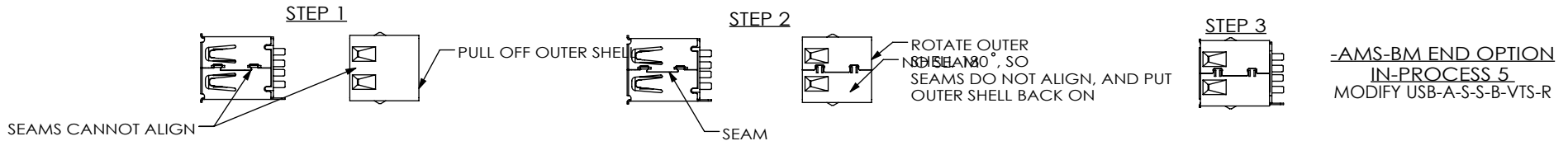
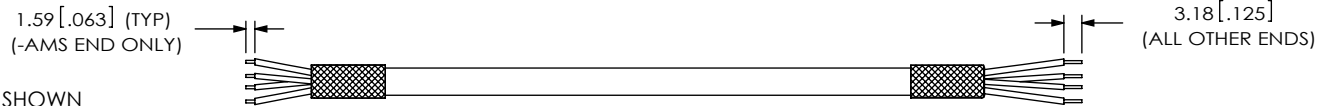
-AMS-BM: END OPTION
IN-PROCESS 2
UCA-03-01
STRIP OUTER JACKET TO DIMENSION SHOWN



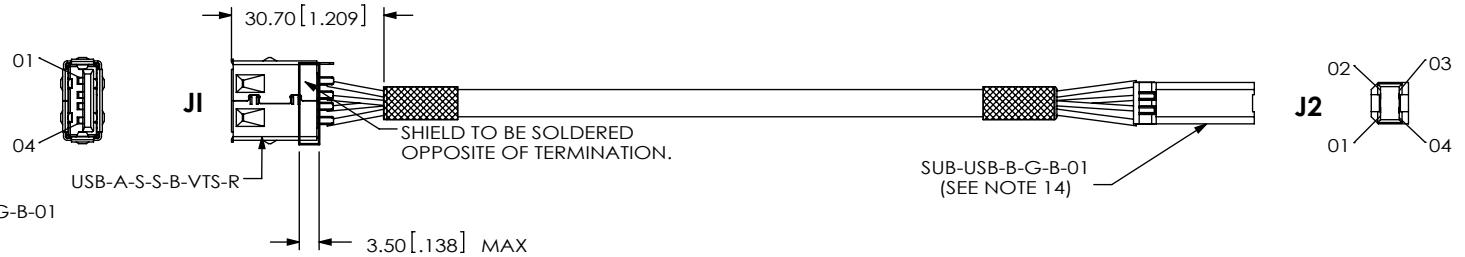
-AMS-BM: END OPTION
IN-PROCESS 3
FOLD BACK SHIELD & TRIM WIRES TO LENGTH



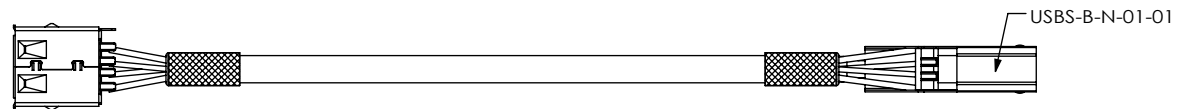
-AMS-BM: END OPTION
IN-PROCESS 4
STRIP INDIVIDUAL CABLES TO DIMENSION SHOWN



-AMS-BM END OPTION
IN-PROCESS 6
TERMINATE TO USB-A-S-S-B-VTS-R & SUB-USB-B-G-B-01
(SEE NOTE 14)
(SEE TABLE 3 FOR PINOUT)



-AMS-BM END OPTION
IN-PROCESS 7
ADD USB-B-N-01-01 SHELL (SEE NOTE 14)



PROPRIETARY NOTE

THIS DOCUMENT CONTAINS CONFIDENTIAL AND PROPRIETARY INFORMATION AND ALL DESIGN, MANUFACTURING, REPRODUCTION, USE, PATENT RIGHTS AND SALES RIGHTS ARE EXPRESSLY RESERVED BY SAMTEC, INC. THIS DOCUMENT SHALL NOT BE DISCLOSED, IN WHOLE OR PART, TO ANY UNAUTHORIZED PERSON OR ENTITY NOR REPRODUCED, TRANSFERRED OR INCORPORATED IN ANY OTHER PROJECT IN ANY MANNER WITHOUT THE EXPRESS WRITTEN CONSENT OF SAMTEC, INC.

DO NOT SCALE DRAWING

SHEET SCALE: 0.75:1

samtec

520 PARK EAST BLVD, NEW ALBANY, IN 47150
PHONE: 812-944-6733 FAX: 812-948-5047
e-Mail: info@SAMTEC.com code 55322

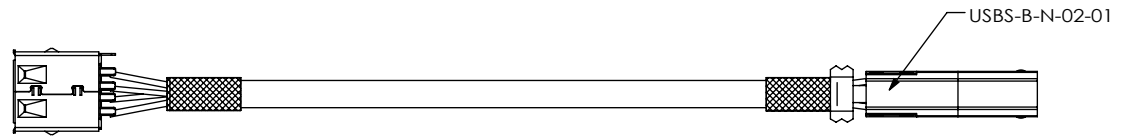
DESCRIPTION:
PANEL MOUNT SEALED USB CABLE

DWG. NO.
SCRUS-17-X-XX.XX-XXX-XX

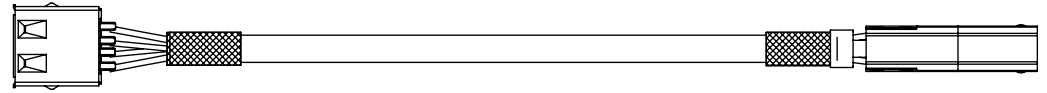
BY: LENNY K 09-01-2010 SHEET 13 OF 15

REVISION AB

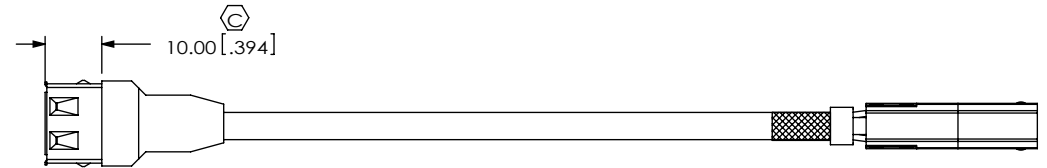
-AMS-BM END OPTION
IN-PROCESS 8
ADD USBS-B-N-02-01 SHELL (SEE NOTE 14)



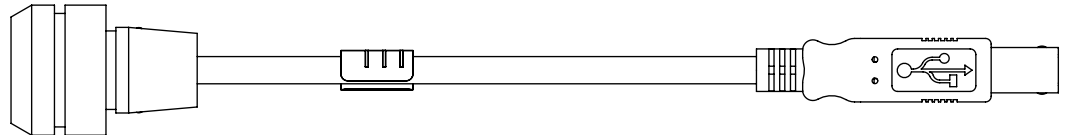
-AMS-BM END OPTION
IN-PROCESS 9 & 10
CRIMP SHELL OVER BRAID
TRIM TAB ON USB-A-S-S-B-VTS-R



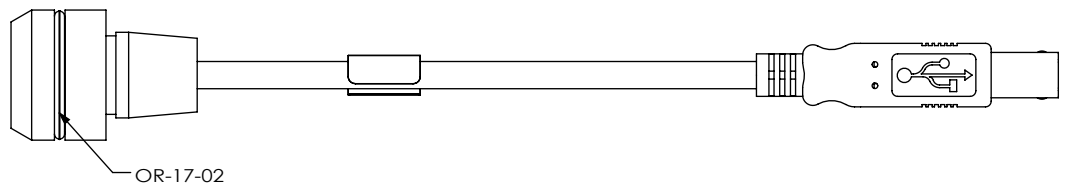
-AMS-BM END OPTION
IN-PROCESS 11
PREMOLD
(SAME AS -BMS-BM, UNLESS OTHERWISE STATED)



-AMS-BM END OPTION
IN-PROCESS 12
OVERMOLDING
(SAME AS -BMS-BM, UNLESS OTHERWISE STATED)



-AMS-BM END OPTION
IN-PROCESS 13
ADD OR-17-02



PROPRIETARY NOTE
THIS DOCUMENT CONTAINS CONFIDENTIAL AND PROPRIETARY INFORMATION AND ALL DESIGN, MANUFACTURING, REPRODUCTION, USE, PATENT RIGHTS AND SALES RIGHTS ARE EXPRESSLY RESERVED BY SAMTEC, INC. THIS DOCUMENT SHALL NOT BE DISCLOSED, IN WHOLE OR PART, TO ANY UNAUTHORIZED PERSON OR ENTITY NOR REPRODUCED, TRANSFERRED OR INCORPORATED IN ANY OTHER PROJECT IN ANY MANNER WITHOUT THE EXPRESS WRITTEN CONSENT OF SAMTEC, INC.

DO NOT SCALE DRAWING

SHEET SCALE: 1:2

samtec

520 PARK EAST BLVD, NEW ALBANY, IN 47150
PHONE: 812-944-6733 FAX: 812-948-5047
e-Mail info@SAMTEC.com code 55322

DESCRIPTION:
PANEL MOUNT SEALED USB CABLE

DWG. NO.
SCRUS-17-X-XX.XX-XXX-XX

BY: LENNY K 09-01-2010 SHEET 14 OF 15

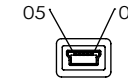
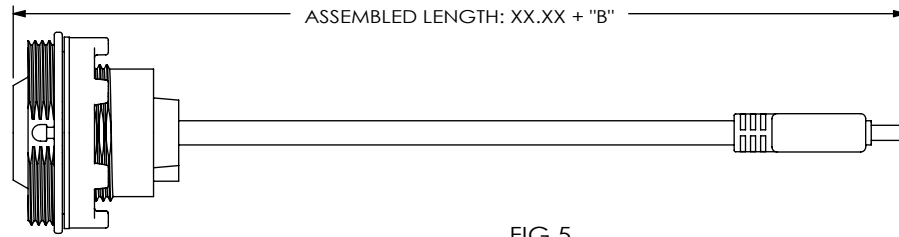
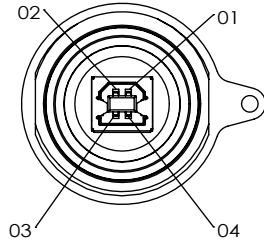


FIG 5
 SCRUS-17-X-XX.XX-BMS-MB SHOWN
 (FOR RIGHT END (UNSEALED MINI USB TYPE B) PREPERATION, SEE SCRUS-10-X-X.XX-XXX-XXX, -MB RIGHT END OPTION)

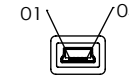
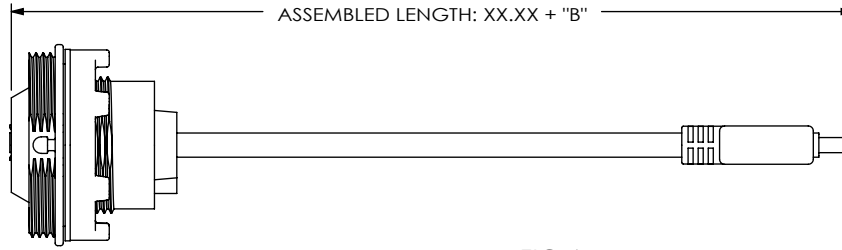
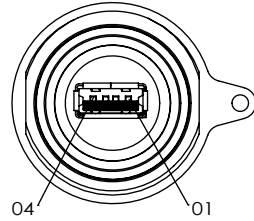


FIG 6
 SCRUS-17-X-XX.XX-AMS-MB SHOWN
 (FOR RIGHT END (UNSEALED MINI USB TYPE B) PREPERATION, SEE SCRUS-10-X-X.XX-XXX-XXX, -MB RIGHT END OPTION)

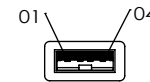
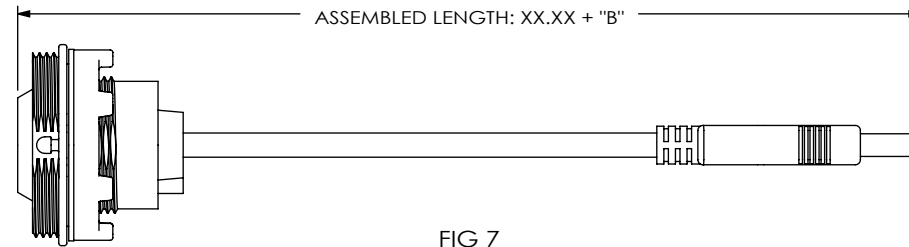
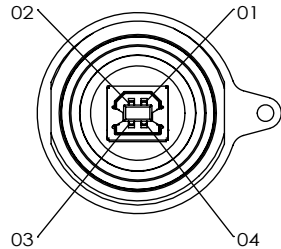


FIG 7
 SCRUS-17-X-XX.XX-BMS-AM SHOWN

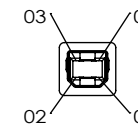
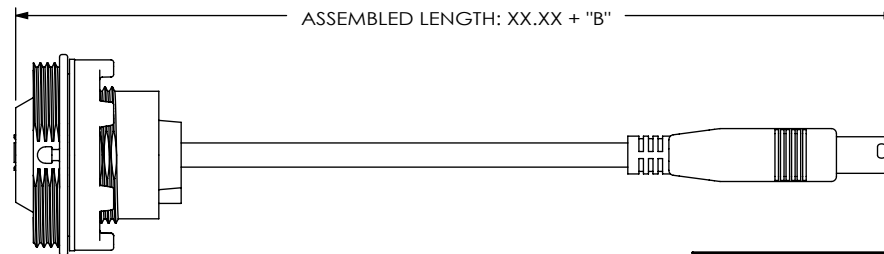
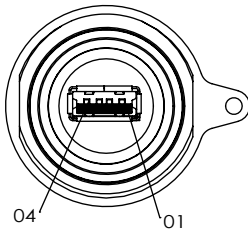


FIG 8
 SCRUS-17-X-XX.XX-AMS-BM SHOWN

PROPRIETARY NOTE
 THIS DOCUMENT CONTAINS CONFIDENTIAL AND PROPRIETARY INFORMATION AND ALL DESIGN, MANUFACTURING, REPRODUCTION, USE, PATENT RIGHTS AND SALES RIGHTS ARE EXPRESSLY RESERVED BY SAMTEC, INC. THIS DOCUMENT SHALL NOT BE DISCLOSED, IN WHOLE OR PART, TO ANY UNAUTHORIZED PERSON OR ENTITY NOR REPRODUCED, TRANSFERRED OR INCORPORATED IN ANY OTHER PROJECT IN ANY MANNER WITHOUT THE EXPRESS WRITTEN CONSENT OF SAMTEC, INC.

DO NOT SCALE DRAWING

SHEET SCALE: 1:1



520 PARK EAST BLVD, NEW ALBANY, IN 47150
 PHONE: 812-944-6733 FAX: 812-948-5047
 e-Mail info@SAMTEC.com code 55322

DESCRIPTION: PANEL MOUNT SEALED USB CABLE

DWG. NO. SCRUS-17-X-XX.XX-XXX-XX

BY: LENNY K 09-01-2010 SHEET 15 OF 15