

SAFETY ORGANIZATION(S):

THIS FILTER HAS BEEN FORMALLY RECOGNIZED, CERTIFIED OR APPROVED BY THE LISTED AGENCY. THEREFORE, ALL TEST/REQUIREMENTS SPECIFIED IN THE LATEST REVISION OF THE FOLLOWING AGENCY STANDARDS HAVE BEEN MET:

UL RECOGNIZED
 CSA CERTIFIED
 VDE APPROVED
 SEV APPROVED

UL 1283
 CSA 22.2, NO.0,0.4,8
 VDE 565-3
 SEV 1055/TP1977/5.1.1

OPERATING SPECIFICATIONS:

LINE VOLTAGE/CURRENT: 10 AMP, 120/250 VAC
 8 AMP./40°C, 250 VAC

LINE FREQUENCY: 50-60Hz

MAX. CASE RISE @ RATED CURRENT: 40°C

MAX. LEAKAGE CURRENT, EACH: .25 mA AT 120V 60Hz
 .4 mA at 250V 50Hz

LINE TO GROUND:

OPERATING AMBIENT TEMP. RANGE: -10°C TO +40°C @ RATED CURRENT, I_r

IN AN AMBIENT, T_a, HIGHER THAN 40°C, THE MAXIMUM OPERATING CURRENT, I_o, IS AS FOLLOWS:

$$I_o = I_r \sqrt{\frac{85 - T_a}{45}}$$

RELIABILITY SPECIFICATIONS:

STORAGE TEMPERATURE: -40°C TO +85°C
 HUMIDITY: 21 DAYS @ 40°C 95% RH
 CURRENT OVERLOAD TEST: 6 TIMES RATED CURRENT FOR 8 SECONDS

TEST SPECIFICATIONS:

INDUCTANCE: 14.26 mH NOMINAL
 CAPACITANCE: (MEASURED @ 1 KHz, 0.25VAC MAX., 25°C±1°C)
 LINE TO GROUND: .0056µF ±20%
 LINE TO LINE: .811µF ±20%
 DISCHARGE RESISTOR: 330KΩ

LINE/GROUND AND LINE/LINE INSULATION RESISTANCE:
 6000MΩ (MIN) AT 100VDC, 20°C AND 50% RH.

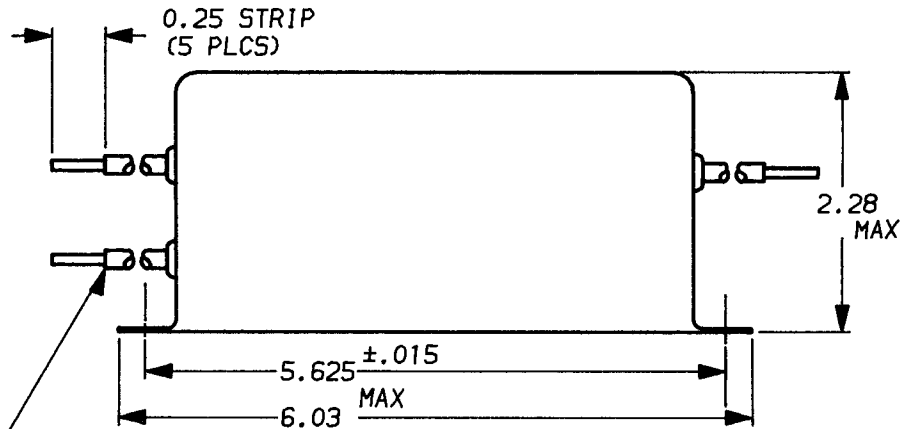
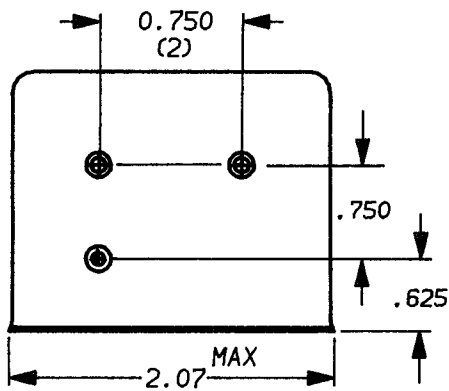
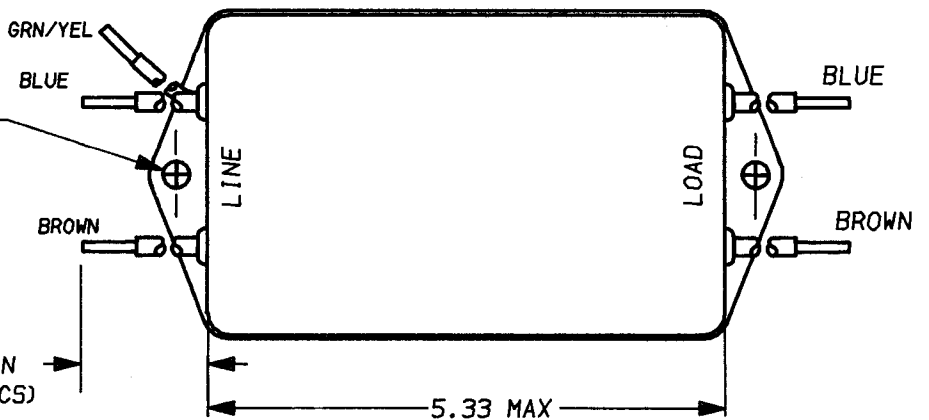
RECOMMENDED RECEIVING INSPECTION HIPOT:

LINES TO GROUND: 2250 VDC FOR 1 MINUTE
 LINE TO LINE: 1450 VDC FOR 1 MINUTE

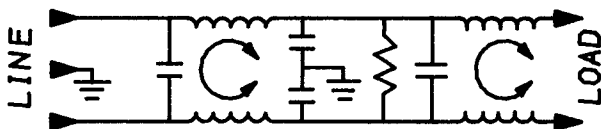
FILTER APPROVAL:

THE BEST WAY TO SELECT AND QUALIFY A FILTER IS FOR YOUR ENGINEERING TO TEST THE UNIT IN YOUR EQUIPMENT.

.250 X .187 SLOT
 EITHER OR BOTH ENDS
 AND/OR
 0.187±.010DIA
 (2)



#14 AWG WIRE (5 LEADS)



50n - 50n (MINIMUM) INSERTION LOSS

FREQUENCY MHz	.01	.04	.05	.06	.15	.5	5.0	10	20	30	/	/
COMMON dB	1	1	10	18	58	65	65	60	38	25	/	/
DIFF. dB	1	2	3	3	30	65	65	65	35	35	/	/

UNLESS OTHERWISE SPECIFIED,
 TOLERANCE TO BE ±.025
 MATERIAL & FINISH: AS SUPPLIED

This document is proprietary to CORCOM INC. and is not to be reproduced nor used for manufacturing purposes except on CORCOM'S prior written consent.



POWER LINE FILTER

DATE: 12-13-94

CATALOG NO.

APPRVD: *[Signature]*

10EP3.06

ECN #11131

CAD NO.

10EP3.06