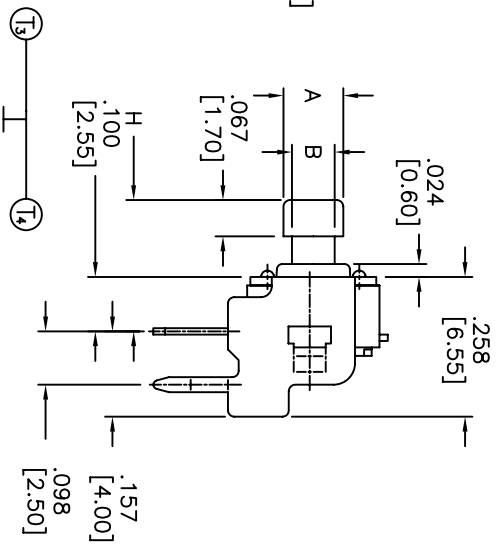
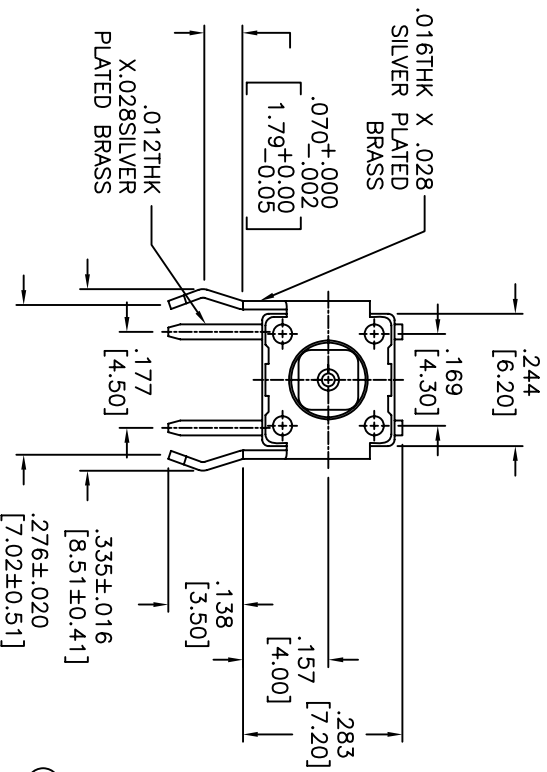


ADTSA644LV
 ADTSA=RIGHT ANGLE TYPE
 TACTILE SWITCH
 PROD. SIZE
 6=6X6mm
 DIMENSION H:
 44=.242 [6.15]
 48=.242 [6.15]

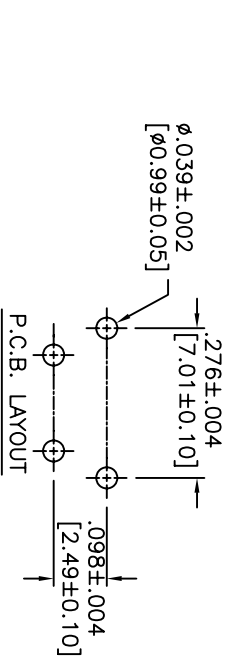
SOLDERING:
 V=LEAD FREE
 COLOR OF STEM FOR FORCE
 N=BROWN, 160gf
 R=RED, 260gf
 S=SALMON, 320gf

PART NO.	DIM. A	DIM. B
ADTSA644*V	.095	.063
ADTSA648*V	.110	.079

DATE	SYM	REVISION RECORD	DWN.	CK.



CIRCUIT DIAGRAM



APEM CONFIDENTIAL
 THIS DOCUMENT CONTAINS INFORMATION WHICH IS THE EXCLUSIVE PROPERTY OF APEM COMPONENTS, INC. DISTRIBUTION, REPRODUCTION OR USE BY OTHERS IS NOT PERMITTED WITHOUT THE EXPRESS WRITTEN CONSENT OF APEM COMPONENTS, INC.

DESCRIPTION: MECHANICAL CONTACT SWITCH
 SPECIFICATIONS:
 STORAGE TEMP. RANGE: -30°C TO +80°C
 OPERATING TEMPERATURE RANGE: -25°C to +70°C
 RATING: 50ma AT 12VDC
 CONTACT RESISTANCE: 100mohm MAX.
 INSULATION RESISTANCE: 100mohm MIN, 500VDC.
 DIELECTRIC STRENGTH: 250VAC FOR 1 MINUTE
 ELECTRICAL LIFE: 100,000 CYCLES FOR 320gf, 260gf
 ELECTRICAL LIFE: 200,000 CYCLES FOR 160gf
 SHOCK RESISTANCE: 50G PER METHOD 213B,
 MIL-STD-202F
 VIBRATION RESISTANCE: PASSES METHOD 201A,
 MIL-STD-202F
 CONTACT ARRANGEMENT: 1 POLE, 1 THROW.
 MATERIALS:
 COVER: STEEL, TIN PLATED
 CONTACT DISC: PHOSPHOR BRONZE WITH SILVER CLADDING
 TERMINAL: BRASS WITH SILVER PLATING
 BASE: UL 94V-0 NYLON THERMOPLASTIC COLOR: BLACK
 STEM: UL 94V-0 NYLON THERMOPLASTIC
 SOLDERING:
 IR REFLOW: 260°C MAX.
 HAND SOLDERING: 350°C MAX. FOR 5 SECONDS MAX.
 (30 WATT IRON MAX.)
 RoHS COMPLIANT
 LEAD FREE PROCESS COMPATIBLE

TOLERANCES (EXCEPT AS NOTED)	APEM		HAVERRHILL, MA.
DECIMAL ± .008	INCH (MM)	SCALE	DRAWN CJD
FRACTIONAL ± 0/20			APPROVED
ANGULAR ± —	TITLE TACTILE SWITCH R/A	DATE 06/22/05	DRAWING NUMBER ADTSA64**V
			REV —