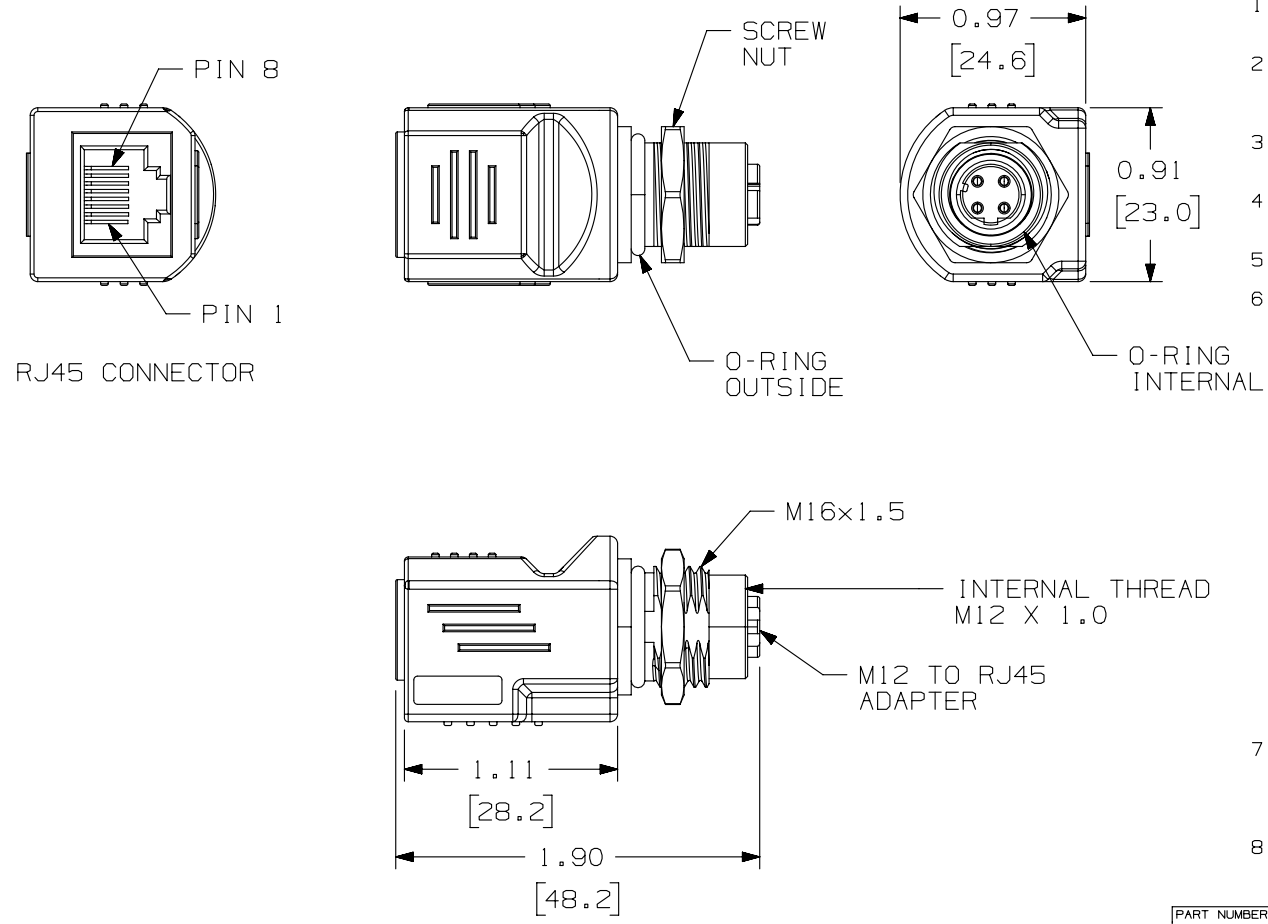


THIS COPY IS PROVIDED ON A RESTRICTED BASIS AND IS NOT TO BE USED IN ANY WAY DETRIMENTAL TO THE INTERESTS OF PANDUIT CORP.



NOTES:

- CONSTRUCTED TO MEET THE FOLLOWING STANDARDS:
 - FEMALE M12 D-CODE END: IEC 61076-2-101
 - M12 TO RJ45: ANSI/TIA-568-C.2
- THE TRANSMISSION PERFORMANCE IS 10/100MBIT ETHERNET ACCORDING TO IEEE 802.3
 - THE PRODUCT WAS TESTED ACCORDING TO ANSI/TIA-568-C.2 PERMANENT LINK, CATEGORY 5E
- MEETS THE FOLLOWING CATEGORIES:
 - CATEGORY 5/CLASS D PER ISO/IEC 11801 DIN 50173-1
 - CATEGORY 5E PER ANSI/TIA/EIA-568-C.2
- ELECTRICAL:
 - WORKING VOLTAGE: 50V
 - WORKING CURRENT: 1A
- MECHANICAL:
 - PANEL THICKNESS: 0.197" [5.0MM] MAXIMUM
- CONSTRUCTION:
 - ALL MATERIALS AND COMPONENTS USED MUST MEET THE MATERIAL RESTRICTIONS OF RoHS, (EUROPEAN DIRECTIVE 2011/65/EU ON THE RESTRICTION OF HAZARDOUS SUBSTANCES) AS PROPOSED BY THE RoHS TECHNICAL ADAPTATION COMMITTEE.
 - COMPONENT MATERIALS:
 - CONNECTOR HOUSING: NYLON/GF BLACK
 - PCB: FR4, 0.8t
 - JACK: PBT, BLACK
 - O-RING OUTSIDE: VITON BLACK
 - O-RING INSIDE: VITON GREEN
 - NUT (ZN) ALLOY, (NI) PLATED
 - SHIELD CONTACT: (CU) ALLOY PLATED WITH (NI)
 - CONTACTS (M12): (CU) ALLOY
 - CONTACTS (RJ45); PHOSPHOR BRONZE
 - CONTACT FINISH (M12): (AU) OVER (NI) PLATED
 - CONTACT FINISH (RJ45): (AU) ON CONTACT AREA PLATED, (SN) PLATED OVER (NI) ON SOLDER AREA PLATED
- ENVIRONMENTAL:
 - OPERATING TEMPERATURE; -13°F-+176°C (-25°C-+80°C)
 - STORAGE TEMPERATURE: -40°F-+176°F (-40°C-+80°C)
 - INGRESS PROTECTION RATING (IP): IP65 (PLASTIC MOLDING/IP68 (M12))
- 0.78 LBS/10 PCS (357.00g/10 PCS)

PART NUMBER	ICAM12DRJS	PRODUCT SPEC/PKG SPEC	N/A
I.I. NUMBER	N/A	WORK INSTRUCTION	N/A

TITLE
**FEMALE M12, D-CODE, 4 POSITION TO FEMALE RJ45
CATEGORY 5 SHIELDED ADAPTER**
CUSTOMER DRAWING

ITEM REVISION NAME
13M438AJ/00

DATASET FILE NAME
13M438AJ_DC02/00A

UNLESS OTHERWISE SPECIFIED,
DIMENSIONAL TOLERANCES ARE: IN [mm]
.x ± .1 [2.54] .xxx ± .005 [0.127]
.xx ± .01 [0.25] ANGLES ± 5°

MATERIAL:

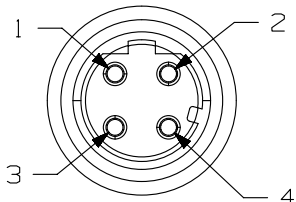
DRAWING NUMBER:
13M438AJ-02

DRAWN BY	DATE	CHK	SCALE	SHT 1 OF 2	SIZE
BJN	1-24-14	DCS	1-24-14	SHT 1 OF 2	A

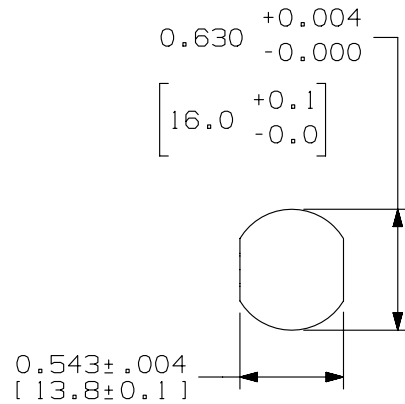
R	1-24-14	BJN	DCS	GAZ	RELEASED TO PRODUCTION	13M438AJ-02
REV	DATE	BY	CHK	APR	DESCRIPTION	ECN

D101000DA/14

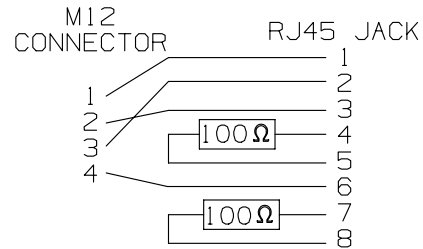
THIS COPY IS PROVIDED ON A RESTRICTED BASIS AND IS NOT TO BE USED IN ANY WAY DETRIMENTAL TO THE INTERESTS OF PANDUIT CORP.



PIN ASSIGNMENTS
FRONT VIEW



M12 RECOMMENDED
PANEL CUT-OUT



ADAPTOR SHIELDED
M12 D CODE TO RJ45

PART NUMBER	1CAM12DRJS	PRODUCT SPEC/PKG SPEC	N/A
I.I. NUMBER	N/A	WORK INSTRUCTION	N/A

TITLE	FEMALE M12, D-CODE, 4 POSITION TO FEMALE RJ45 CATEGORY 5E SHIELDED ADAPTER
CUSTOMER DRAWING	

ITEM REVISION NAME	13M438AJ/00	PANDUIT
DATASET FILE NAME	13M438AJ_DC02/00A	

UNLESS OTHERWISE SPECIFIED, DIMENSIONAL TOLERANCES ARE: IN (mm)		MATERIAL:
.x ± .1 [2.54]	.xxx ± .005 [.127]	DRAWING NUMBER: 13M438AJ-02
.xx ± .01 [.25]	ANGLES ± 5 °	
		THIRD ANGLE PROJECTION

REV	DATE	BY	CHK	APR	DESCRIPTION	ECN
R	1-24-14	BJN	DCS	GAZ	SEE SHEET 1 FOR REVISION HISTORY	13M438AJ-02

DRAWN BY	DATE	CHK	SCALE	SHT 2 OF 2	SIZE
BJN	1-24-14	DCS	FULL		A

D10100DA/14