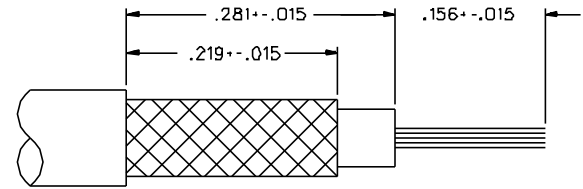
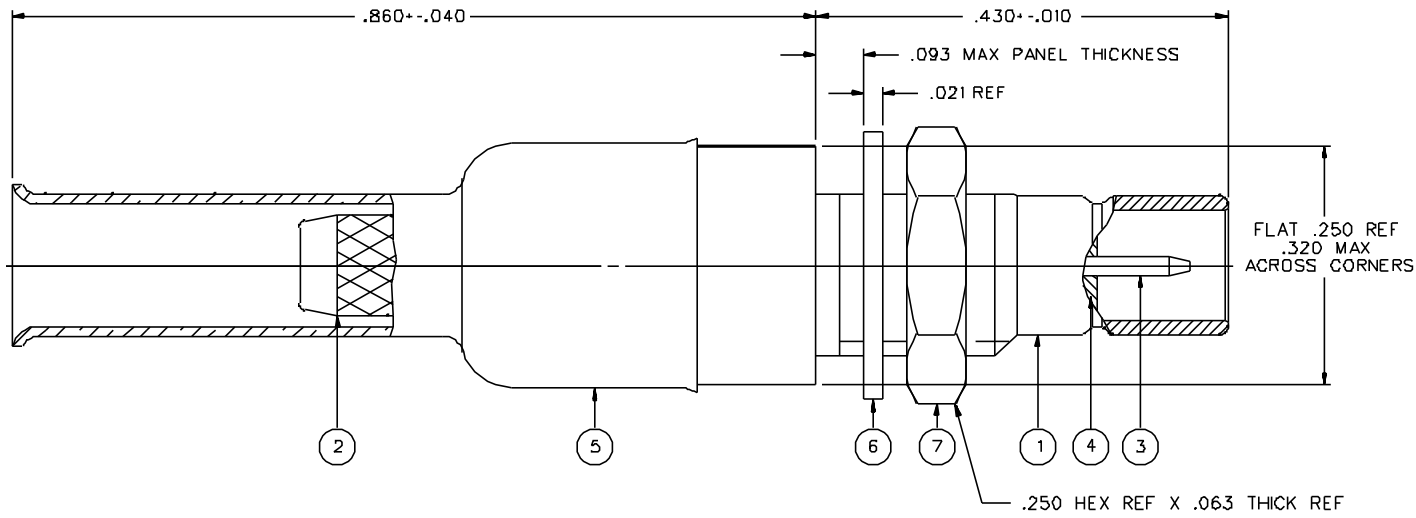
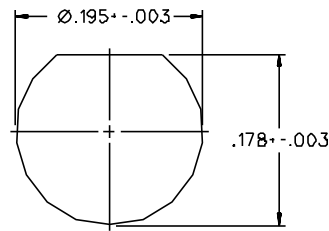


| PART NUMBER | ITEM ① BODY - FRONT | ITEM ② BODY - REAR | ITEM ③ CONTACT | ITEM ④ INSULATOR | ITEM ⑤ CRIMP SLEEVE | ITEM ⑥ WASHER | ITEM ⑦ NUT |
|--------------|---|---|--|---------------------|--|---|---|
| 131-B3D3-401 | BRASS GOLD PL .00001 MIN OVER NICKEL PL .00005 MIN OVER COPPER PL .00005 MIN | BRASS GOLD PL .00001 MIN OVER NICKEL PL .00005 MIN OVER COPPER PL .00005 MIN | BERYLLIUM COPPER GOLD PL .00003 MIN OVER NICKEL PL .00005 MIN OVER COPPER PL .00005 MIN | TEFLON | COPPER GOLD PL .00001 MIN OVER NICKEL PL .00005 MIN OVER COPPER PL .00005 MIN | PHOSPHOR BRONZE GOLD PL .00001 MIN OVER NICKEL PL .00005 MIN OVER COPPER PL .00005 MIN | BRASS GOLD PL .00001 MIN OVER NICKEL PL .00005 MIN OVER COPPER PL .00005 MIN |
| 131-B3D3-406 | BRASS NICKEL PL .0001 MIN OVER COPPER PL .00005 MIN | BRASS NICKEL PL .0001 MIN OVER COPPER PL .00005 MIN | BERYLLIUM COPPER GOLD PL .00003 MIN OVER NICKEL PL .00005 MIN OVER COPPER PL .00005 MIN | TEFLON | COPPER NICKEL PL .0001 MIN OVER COPPER PL .00005 MIN | PHOSPHOR BRONZE NICKEL PL .0001 MIN OVER COPPER PL .00005 MIN | BRASS NICKEL PL .0001 MIN OVER COPPER PL .00005 MIN |

| | | | |
|---|---------|-----------------|----------------------|
| DRAWING NO. C - 131-8303-401/410 | | | |
| 0 REVISIONS | | | |
| ENGINEERING RELEASE | | | |
| 1 | 3-19-91 | R H R H R H R H | 4-12-91 ECQ 40305 |
| VERSION UPDATE | | | |
| 2 | 6-30-91 | R H R H R H R H | 7-9-91 ECQ 40456 |
| VERSION UPDATE | | | |
| 3 | 9-16-92 | R H R H R H R H | 9-25-92 ECQ 47268 |
| CHANGED: RF HIGH POT 4 AND 7 MHZ WAS 5 MHZ | | | |
| * REVISION NUMBER FOLLOWED BY AN ALPHA * | | | |
| * CHARACTER INDICATED DRAWING CLARIF. | | | |
| * CATION OR PART NUMBER ADDITION ONLY * | | | |
| 3a | 3-16-98 | R H R H R H R H | ECN 44921 745476 |



CABLE STRIP DIMENSIONS



MOUNTING HOLE

NOTES:

1. SPECIFICATIONS:

IMPEDANCE: 75 OHMS
 FREQUENCY RANGE: 0-2 GHZ
 VSWR: 1.25+.04 F (F IN GHZ)
 WORKING VOLTAGE: 335 VRMS MAX AT SEA LEVEL
 DIELECTRIC WITHSTANDING VOLTAGE: 1000 VRMS MIN AT SEA LEVEL
 INSULATION RESISTANCE: 1000 MEGOHM MIN
 CONTACT RESISTANCE:
 CENTER CONTACT - INITIAL 6 MILLIOHM MAX, AFTER ENVIRONMENTAL 8 MILLIOHM MAX
 OUTER CONDUCTOR - GOLD PLATED INITIAL 1 MILLIOHM MAX, AFTER ENVIRONMENTAL 1.5 MILLIOHM MAX, NICKEL PLATED INITIAL 2.5 MILLIOHM MAX, AFTER ENVIRONMENTAL 3.5 MILLIOHM MAX
 BRAID TO BODY - INITIAL 1 MILLIOHM MAX (GOLD PLATED); 2.5 MILLIOHM MAX (NICKEL PLATED) AFTER ENVIRONMENTAL NOT APPLICABLE
 CORONA LEVEL: 250 VOLTS MIN AT 70,000 FEET
 INSERTION LOSS: .30 DB MAX AT 1.5 GHZ
 RF LEAKAGE: -55 DB MIN AT 2 GHZ
 RF HIGH POTENTIAL WITHSTANDING VOLTAGE: 700 VRMS AT 4 AND 7 MHZ

MECHANICAL:

ENGAGE/DISENGAGE FORCE: INITIAL 14 LBS MAX, AFTER DURABILITY 14 LBS MAX
 ENGAGEMENT/2 LBS MIN DISENGAGEMENT
 MATING TORQUE: NOT APPLICABLE
 COUPLING PROOF TORQUE: NOT APPLICABLE
 COUPLING NUT RETENTION: NOT APPLICABLE
 CONTACT RETENTION: 4 LBS MIN AXIAL FORCE
 CABLE ACCEPTABILITY: RC179/U, RC187/U
 CABLE HEX CRIMP SIZE: .128
 CABLE RETENTION: 20 LBS MIN OR CABLE BREAKING STRENGTH
 DURABILITY: 500 CYCLES MIN

ENVIRONMENTAL:

(MEETS OR EXCEEDS THE APPLICABLE PARAGRAPH OF MIL-C-39D12)
 THERMAL SHOCK: MIL-STD-202, METHOD 107, CONDITION B
 OPERATING TEMPERATURE: -65 DEG C TO 165 DEG C
 CORROSION: MIL-STD-202, METHOD 101, CONDITION B
 SHOCK: MIL-STD-202, METHOD 213, CONDITION B
 VIBRATION: MIL-STD-202, METHOD 204, CONDITION B

CUSTOMER DRAWING

THIS DRAWING TO BE INTERPRETED PER ANSII Y14.5M - 1982

"µSTATION"

COMPANY CONFIDENTIAL

| | | | |
|--------------------------------------|--------------------|-----------------|---|
| TOLERANCE UNLESS OTHERWISE SPECIFIED | DRAWN BY TAK | DATE 2-6-91 | Cinch Connectivity Solutions 299 Johnson Ave. Ste. 100 Waseca, MN 56093 1-800-247-8256 |
| DECIMALS .XX | CHECKED BY TAK | DATE 3-19-91 | |
| .XXX | APPROVED BY TAK | DATE 4-9-91 | TITLE JACK ASSEMBLY, STRAIGHT CABLED BULKHEAD- MINI-75 OHM SMB, RG 179 |
| FINISH | APPROVED BY RJB | DATE 4-9-91 | CODE NO. |
| | RELEASE DATE | 4-12-91 | DRAWING NO. C - 131-8303-401/410 |
| | | | SCALE 10:1 U/N INCH SHEET 2 OF 2 |